

ROBINESSES REVIEW

£2

OFFICIAL MATCHDAY
PROGRAMME - ISSUE 1



**FA WNL SOUTHERN PREMIER DIVISION
CHELTENHAM TOWN WOMEN VS EXETER CITY WOMEN
17/08/25**



mira
SHOWERS



**FINANCIAL
FITNESS GROUP**





FINANCIAL FITNESS GROUP

Proud Partners of
Gloucestershire's Largest Women's Football Club



**CHELTEHAM TOWN
WOMEN FC**

ANDY LIDDLE



- Cheltenham Town Women FC's Chairman shares his thoughts on today's fixture

Good Afternoon and welcome back to Kayte Lane for the start of another exciting and highly competitive season in the Women's National League.

I am delighted to welcome the players, staff and fans of Exeter City Women this afternoon in what promises to be a very close opener.

There wasn't much to choose between the 2 sides last season, but Exeter came away with all 6 points, and this therefore represents a great opportunity to see exactly where we are at after a very good pre-season.

There are a few new faces for you to become familiar with, and I am sure some will go on to be firm favourites as the season progresses.

Once again, your support means everything to everyone involved at the Club, so tell your friends, relatives, colleagues and anyone who will listen (and especially those that don't) how you enjoy your Sunday afternoons and help drive bigger crowds, more noise and back the Robins Women.

The Lionesses' success over the summer has again highlighted the increasing commercial appeal of the Women's game, and we have a number of ways we can help businesses reach a female audience cost-effectively.

Do get in touch with your ideas via commercial@ctwomenfc.com or 07900 808067.

We're a club on the up and growing in so many ways. If you would like to help volunteer on match days, or have something to offer at board level or any other capacity, do please get in touch chairman@ctwomenfc.com

We're looking forward to seeing you here again on Thursday evening under the lights for a 7:45 kick off and a local cup derby against Worcester City Women. What could be better than 2 home games in week 1 !

Andy Liddle
Chairman



TOM DAVIES

MANAGER'S NOTES...

Good afternoon, and welcome to Kayte Lane for our opening game of the season against Exeter City.

Firstly, I'd like to extend a warm welcome to Abbie, her staff, players, and the travelling supporters. Whenever we face Exeter, it's always a tightly fought contest, full of intensity, quality, and great to watch.

I'm sure today will be no different, and it's the perfect fixture to kick off our new campaign. It's been a busy and productive summer for us, both on and off the pitch.

I'm delighted to welcome our new signings; Charlotte Haynes, Ella Stowell, Casi Evans, Charlotte Salisbury-Williams, Emma Congrave, Bella Hall, and Louise Apuusi, who have all settled in brilliantly and brought real quality to the group.

It's also fantastic to see Karly Norman making the step up from the reserves following a loan spell at tier 4 last season, and we're delighted to have Amelie Curtis with us permanently following her successful loan last season.

This blend of new faces, returning players, and our existing squad gives us real strength and depth for the challenges ahead.

Pre-season has, as always, thrown up its share of challenges, but the commitment, dedication and trust shown by the group has been outstanding.

We've tested ourselves with lots of fixtures to aid the squad development with many new faces coming in, and this will continue within the season, allowing us to build the connectivity and understanding required for successful results.

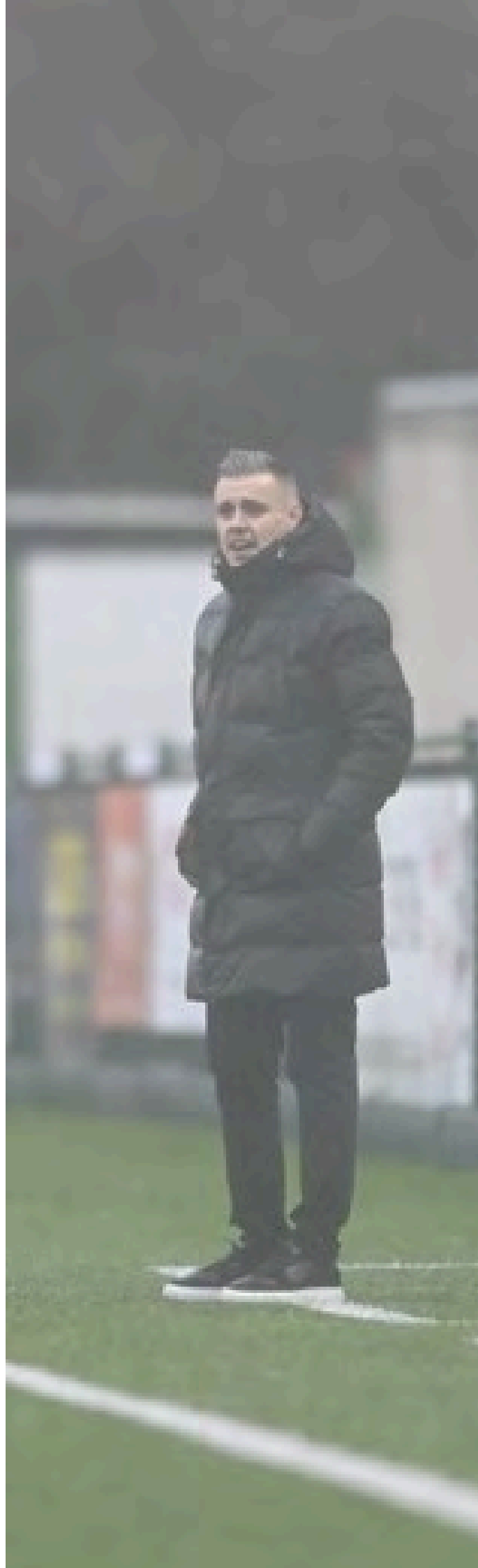
Opening day fixtures always carry a special buzz, and there's a real excitement within the squad to get going again.

We know the league will be as competitive as ever, but we're ready for the challenge.

Our aim is to set the tone from the very start, playing with intensity, quality, and the togetherness that has been the foundation of our success in recent years.

Let's enjoy the beginning of the season, embrace the challenge, and get our campaign underway!

Enjoy the game,
Tom





CHELTENHAM TOWN WOMEN FC
VOLUNTEERS
NEEDED!

Interested?

Contact us at
info@ctwomenfc.com
or via The Club website:

WWW.CTWOMENFC.COM

WE NEED HELP WITH:

- Club Event Organisation
- Home Attendance Development
- Match Day Mascot Liason
- Club Shop Assistance
- Turnstile Operation/Assistance
- Raffle Ticket Sales/Assistance

Today's Opposition: Exeter City



PREVIOUS OUTING:

The Grecians come into today's season opener after beating Northern Tier Three side, Wolverhampton Wanderers, 4-3 at the SEAH Stadium. Sophie Gillies scored a hat-trick, before summer signing Georgia Vaccaro scored the winner in injury-time to ensure a 100% record in pre-season.

Wolves, one of the favourites for promotion in the Northern half of the National League Tier Three, proved a tough test for Tom Davies' side last season in both the FAWNL Plate and the Adobe Women's FA Cup.

Exeter were two up at half time, but the Golden Girls bounced back early in the second through Jade Cross and Louanna Worsey.

Gillies added her third before Vaccaro got herself onto the scoresheet. Wolves pulled one back late on, thanks to Beth Merrick from the penalty spot, but Exeter walked away with a final pre-season win.

Exeter City Women Line-Up v Wolves:
Bond (GK), Poole, Seaman, Jackson, Taylor, Pollock, Burridge, Baker, Sara, Gillies, Stacey.

Subs used: Giles (GK), Sandland, Ireland, Everson, Presswell, Vaccaro.



ONE TO WATCH:



Sophie Gillies

Forward Sophie Gillies will be on to watch this afternoon for the visitors, coming into the game after that hat-trick against Wolves last week.

She rejoined Exeter in 2024, having previously been with the club. Her first season in senior football was a historic one, scoring 50 goals in all competitions, a club record for both men's and Women's.

IN THE DUGOUT: ABBIE BRITTON

Opposition manager Abbie Britton has been with the Grecians since 2016 and has become a big part of women's football at Exeter City.

A first season managing at Tier Three last season, Britton was nominated for Manager Of the Season, and won the award at Wembley ahead of the Adobe Women's FA Cup Final.

As well as this, she won manager of the month on three separate occasions, picking up the award in August, December and March.

During her time in charge at Exeter, she has also overseen a run to the fourth round of the FA Cup, the furthest the club has ever gone in the competition.



Last Season vs Cheltenham:

Newly promoted into Tier Three last season, Abbie Britton's side proved a tough test for the Robinesses.

Our first meeting was at Kayte Lane in October, which saw the visiting side leave with three points.

Despite a strong showing from Cheltenham, Sarah Stacey scored late on in the first half, before Sophie Gillies and Zoe Watkins got themselves on the scoresheet in the second half.

A visit to St. James Park was on the cards towards the end of the season, and once again

Tom Davies' side saw another close encounter.

Amber Pollock opened the scoring for Exeter, and despite equalising at the start of the second half, Cheltenham left empty handed after Maya Kendell scored just after the hour mark.



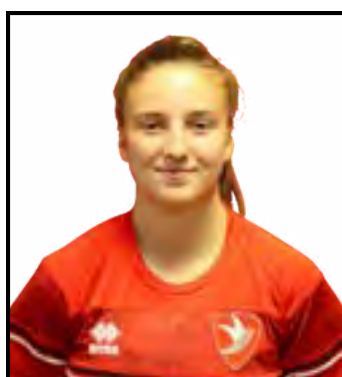
CHELTENHAM TOWN WOMEN FC

2025/26 SQUAD

Want to sponsor your favourite player?
Contact commerical@ctwomenfc.com now!



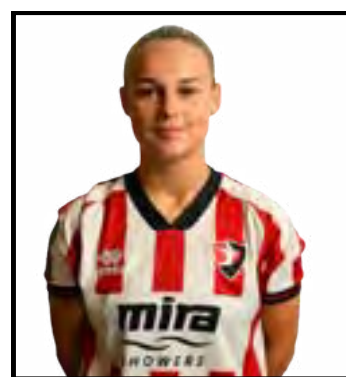
1. CHARLOTTE HAYNES



2. ANAIS TRINCI



3. CHARLOTTE
SALISBURY-WILLIAMS



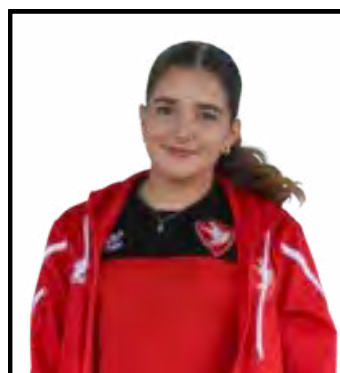
4. HOLLY FINCH



5. COURTNEY JONES



6. CASI EVANS



7. AMELIE CURTIS



8. MEG ARNOTT



9. CLARABELLA HALL



10. LIBBY BELL



13. FFION LLEWELLYN



15. EMILY OWEN



16. LOUSIE APUUSI



17. KARLY NORMAN



18. BROOKE ELLIS



19. EMMA CONGRAVE



20. ISSY NEWNS



21. UNA LUE



27. ELLA STOWELL



Football should be unforgettable.

Every three minutes someone in the UK develops dementia.

Scan the QR code or visit **alzheimers.org.uk/sports** to understand the symptoms of dementia and get the support you need.



**Alzheimer's
Society**

Alzheimer's Society operates in England, Wales and Northern Ireland.
Registered charity no. 296645

Together we are help & hope
for everyone living with dementia

MATCH ACTION

Sunday, August 10 2025 | 14:00 | Pre-Season Friendly



KEYNSHAM TOWN LFC

0 - 1

CHELTENHAM TOWN WFC



Cheltenham Town Women round out pre-season with a 1-0 win against Keynsham Town Ladies

Cheltenham Town Women rounded out their pre-season campaign with a 1-0 away win over Keynsham Town Women at the AJN Stadium last weekend.

A second-half goal from new signing Clarabella Hall (pictured) was enough for the Robinesses to win their final game ahead of the 2025/26 season.



The game started slowly, with captain Emily Owen having the first shot for Cheltenham, but keeper Chloe Jones gathered her effort from long range.

Libby Bell was the next to try her luck; her strike on the right-hand side flew over the bar.

The hosts had a good chance through Mia Mugford, who couldn't connect fully with Georgia Galley's cross, the ball rebounding wide off the striker from close range.

Una Lue and Bell both had second efforts before half-time, efforts which were once again saved by Keynsham Town's number one.

The score remained goalless at half-time.

Hall had the first shot of the second half, narrowly missing the target from a tight angle on the left-hand side.

From there on, Cheltenham applied more pressure, Owen again trying from long distance, her powerful effort just about saved, before Hall almost got to the ball on the rebound.

Issy Newns then met Anais Trinci's by-line cross, the ball deflecting high off her knee and wide of the target.

Lue was the next player to try and find the opener, beating her defender before volleying wide, but it was better from the Robinesses.

The deadlock was finally broken courtesy of Hall, who finished well into the roof of the net after Trinci's deflected cross fell to her on the edge of the box.

Keynsham thought they'd equalised in the final few minutes of the game; however, the linesman had his flag up for offside.

A barrage of corners and pressure from Cheltenham didn't pay off for a second, with the game ending 1-0 to Cheltenham.

GET TO KNOW COURTNEY JONES

NICKNAME - CEEJ

10 QUICK QUESTIONS TO GET TO KNOW THE RETURNING CENTRE-BACK

What's your favourite food?

It's got to be a Sunday dinner, nothing better than a roast

Who are your favourite football team? [other than Cheltenham, obviously]

Bit controversial because I've got two. Chelsea and then Wolves, who are close to my heart

If you could have a superpower, what superpower would it be?

Probably time travel because I'm sick of being on the M5 and driving everywhere!

If you had to play a sport other than football, what would that sport be?

I do like a bit of cricket, so maybe cricket

Who was your football idol growing up?

Super Frank Lampard

If you were stuck on a desert island with a teammate, which teammate would you pick?

Probably Meg, she's quite logical in the way she thinks so we'd make a good team!

Pineapple on pizza, yes or no?

For me, that's an absolute no, and I don't really like pizza if I'm being honest,



What are your favourite pre-match song/songs?

Anything upbeat that hypes the girls up for the game, and gets everyone in the mood. As long as it works and we get the three points I'm happy!

If you could time-travel, would you go to the past or future?

I'd go to the past, probably to see loved ones. I don't really want to know what the future holds!

If you could only eat one thing for the rest of your life, what would it be?

Even though a roast is good, it's got to be steak, love a steak

MEET OUR MASCOTS

CHELTENHAM TOWN WOMEN'S UNDER 7'S



Cheltenham Town Football Club

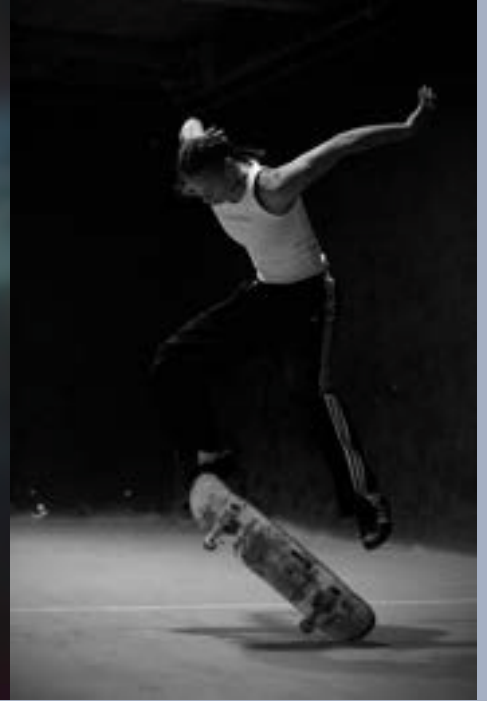


U7 Women 2024-25

WE ARE DELIGHTED TO WELCOME OUR VERY OWN UNDER 7'S TEAM TO KAYTE LANE AS OUR MASCOTS FOR TODAY'S SEASON OPENER.

WE HOPE YOU HAVE A FANTASTIC DAY WITH US!

Lily Gurney Photography



@PHOTOGRAPHY_LILY.G

For any enquires, please contact
lily.gurney@gmail.com

FIXTURES AND RESULTS

2025/26 COMPETITIVE FIXTURES



TheFA Women's
National League

DATE		OPPOSITION	COMP.	ATT	POM
AUG					
Sun 17	H	Exeter City Women	FAWNL SP	14:00	
Thur 21	H	Worcester City Women	FAWNL LC	19:45	
Sun 24	A	Real Bedford Women	FAWNL SP	14:00	
Sun 31	H	Oxford United Women	FAWNL SP	14:00	
SEP					
Sun 7	H	Birmingham City Academy	FAWNL LC	14:00	
Sun 14	H	Watford FC Women	FAWNL SP	14:00	
Sun 21	A	AFC Bournemouth Women	FAWNL SP	14:00	
Sun 28	A	Kidderminster Harriers Women	FAWNL LC	14:00	
OCT					
Sun 5	H	Plymouth Argyle Women	FAWNL SP	14:00	
Sun 12	A	AFC Wimbledon Women	FAWNL SP	14:00	
Thur 30	A	Gwalia United Women	FAWNL SP	19:45	
NOV					
Sun 2	H	Lewes FC Women	FAWNL SP	14:00	
Sun 16	A	Hashtag United Women	FAWNL SP	14:00	
Sun 30	H	Billericay Town Women	FAWNL SP	14:00	
DEC					
Sun 7	A	Exeter City Women	FAWNL SP	14:00	
JAN					
Sun 4	H	Real Bedford Women	FAWNL SP	14:00	
Sun 25	A	Oxford United Women	FAWNL SP	14:00	
FEB					
Sun 8	A	Lewes FC Women	FAWNL SP	14:00	
Thur 19	H	Gwalia United Women	FAWNL SP	19:45	
Sun 22	A	Watford FC Women	FAWNL SP	14:00	
MAR					
Sun 8	H	AFC Bournemouth Women	FAWNL SP	14:00	
Sun 22	H	AFC Wimbledon Women	FAWNL SP	14:00	
Sun 29	A	Plymouth Argyle Women	FAWNL SP	14:00	
APR					
Sun 12	H	Hashtag United Women	FAWNL SP	14:00	
Sun 26	A	Billericay Town Women	FAWNL SP	14:00	

Fixture details subject to change

FAWNL SP: FA Women's National League Southern Premier

FAWNL LC: FA Women's National League League Cup Group F

POM: Player of the Match (as chosen by poll, match sponsor, or opposition where applicable)



TODAY'S TEAMS

CHELTENHAM TOWN WFC

- 01 Charlotte Haynes
- 02 Anais Trinci
- 03 Charlotte Salisbury-Williams
- 04 Holly Finch
- 05 Courtney Jones
- 06 Casi Evans
- 07 Amelie Curtis
- 08 Megan Arnott
- 09 Clarabella Hall
- 10 Libby Bell
- 13 Ffion Llewellyn
- 15 Emily Owen (c)
- 16 Lousie Apuusi
- 17 Karly Norman
- 18 Brooke Ellis
- 19 Emma Congrave
- 20 Issy Newns
- 21 Una Lue
- 27 Ella Stowell

Manager: Tom Davies

EXETER CITY WFC

- 01 Abbi Bond
- 02 Bow Jackson (C)
- 03 Emily Toogood
- 04 Jaydee Seaman
- 05 Fearne Slocombe
- 06 Jess Sandland
- 07 Phoebe Baker
- 08 Beth Ireland
- 09 Ellie Sara
- 10 Sarah Stacey
- 11 Beth Everson
- 12 Olivia Giles
- 14 Emily Poole
- 15 Ishbel Zuurmond
- 18 Georgia Vaccaro
- 19 Mollie Taylor
- 20 Matilda Franchi
- 21 Sophie Gillies
- 22 Leah Burrridge
- 23 Amber Pollock
- 24 Lily Dowling

Manager: Abbie Britton



TODAY'S MATCH OFFICIALS

Referee:

Keith Simpson

Assistant Referees:

Christopher Pettis &
Max Thompson