

THE

OFFICIAL MATCHDAY MAGAZINE OF CHELTENHAM TOWN WOMEN FC | ISSUE 13

ROBINESSES REVIEW



CHELTENHAM TOWN WFC V SOUTHAMPTON FC ACADEMY
FA WOMEN'S NATIONAL LEAGUE PLATE SEMI-FINAL
SUNDAY JANUARY 26, 2025 | 2:00PM

£1.50



**MAKE
FOOTBALL
EVERYONE'S
GAME.**

CHELTENHAM TOWN WOMEN FC

VOLUNTEERS NEEDED!

Interested?

Contact us at
info@ctwomenfc.com
or via The Club website

WWW.CTWOMENFC.COM

WE NEED HELP WITH:

- Club Event Organisation
- Home Attendance Development
- Match Day Mascot Liaison
- Club Shop Assistance
- Turnstile Operation/Assistance
- Raffle Ticket Sales/Assistance

ANDY LIDDLE

- Cheltenham Town Women FC's Chairman shares his thoughts ahead of today's fixture



Good Afternoon and welcome back to Kayte Lane for our FA Women's National League Plate semi-final with Southampton Academy.

This is our first semi-final as a Tier Three club, further recognition of the upward trajectory the Club is on, exciting times.

Following our Adobe Women's FA Cup exit last time out at Kayte Lane, we beat Bristol Rovers away last weekend in Group B of the GFA County Cup, the 1-0 scoreline reflecting the state of the pitch rather than our level of dominance.

This afternoon represents our third Cup match in a row, we're deep into January and still fighting on so many levels. Personally, I could not be prouder of the run we are on, testament to the great work from Tom and the whole support and playing staff.

Southampton U21s are obviously a young side, but are part of a Championship level Club with significant resources and it is interesting that two academy sides have made the semi-finals, the other being Manchester United. We are looking forward to playing a side we have never played before, which always throws up different challenges.

We are nearing the end of a project that will see us enhance our match day offering to fans. We have consulted widely and will be introducing some indoor games to keep our younger supporters occupied during the colder

months, along with a wider engagement with the local community... more to follow.

We are continually looking for additional volunteers to help the Club on so many levels, if you are able to help in any small way, do please get in touch via chairman@ctwomenfc.com

As always, thank you for your support, and enjoy the game

**Andy Liddle,
Chairman**





- The Robinesses Manager looks ahead to today's game...

Good afternoon, and welcome to Kayte Lane for today's FA WNL Plate Semi-Final against Southampton Under 21s.

Firstly, I'd like to extend a warm welcome to our visitors - Southampton's players, staff, and supporters. We're looking forward to what promises to be an exciting and challenging game.

It's been an intense few weeks for the team. Our narrow loss to Wolves Women in the Fourth Round of the Adobe Women's FA Cup was tough to take, especially considering the effort and resilience we showed against a strong side. Despite the result, the occasion was a true measure of how far we've come, on and off the field, with history being made in reaching the round, and on the day itself, with a new record attendance, with so many young fans joining us for the day.

We bounced back in style with a dominant performance against Bristol Rovers in the County Cup. Although the conditions of the pitch prevented either side from playing fantastic football, I thought we showed moments of bravery to try and play our way and showed a professionalism to get the job done without any risk towards our own goal.

However, we're aware that we should have taken our chances and put the game to bed a lot earlier, which is something we're continuing to work on.

Looking ahead to this Semi-Final, we know it's going to be a tough test. Southampton Under 21s are a well-organized and talented side, but we've prepared as normal, and we're ready to give everything to book our place in the Final. These occasions are what we work for, and I have no doubt this group will rise to the challenge with the same determination, energy, and togetherness that have been the hallmarks of our season so far.

Your support is going to be huge again today - let's give it everything together and make this another memorable day for Cheltenham Town Women.

Enjoy the match.

Tom



**FINANCIAL
FITNESS GROUP**

Proud Partners of
Gloucestershire's Largest Women's Football Club



**CHELTENHAM TOWN
WOMEN FC**



BECOME A PERSONAL TRAINER

- ✔ Level 2 & 3 Personal Training Courses
- ✔ Teachers with 20+ years in the industry
- ✔ Learn hands-on skills over a 10-week course
- ✔ Combining theory with real-life experience
- ✔ Flexible payment scheme

Courses start in February. Book Your Place:

07376 060314

courses@personaltrainingeducation.co.uk



ROBINNESSES SHOP

ctlfc.myshopify.com

Scan here to access the shop



**BRAND NEW!
CTWFC
BOTTLE
£14**



CTWFC Mug
£6.50



CTWFC Hat
£13.50



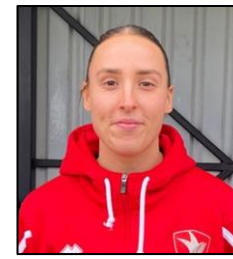
CTWFC Scarf
£13.50



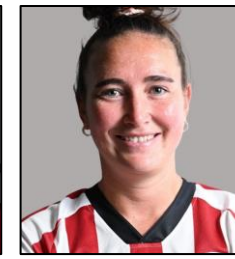
**CHELTHENHAM TOWN
WOMEN FC
SQUAD 2024/25**



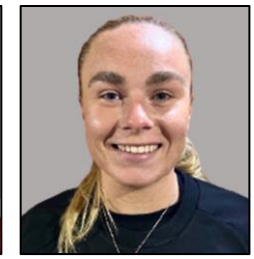
**KAITLYN
MORGAN-HEMMENS**



ISSY NEWNS



EMILY OWEN



ELLA PEMBERTON



MEG ATTENBOROUGH



LIBBY BELL

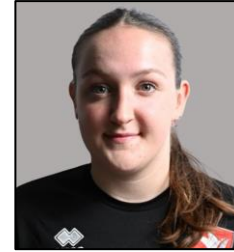
Sponsored By:
MORGAN & CARTER
POWELL



HENNA BUTCHER



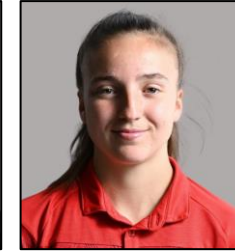
MAISY COLLIS



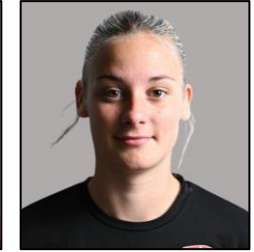
CARYS PUGH-JONES



MIA SMITH



ANAIS TRINCI



LILLY WELLESLEY-DAVIES

Sponsored By:
BLADES BIKES



BROOKE ELLIS



HOLLY FINCH



DORIS GREENWOOD

Sponsored By:
ADNET PRECISION
ENGINEERING LTD



ABBEY HATELEY

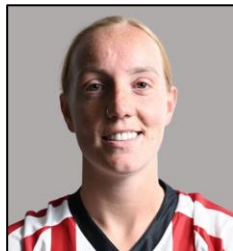


COURTNEY JONES



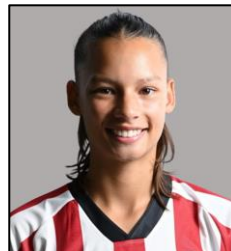
OUT ON LOAN

JESSICA LEACH



FFION LLEWELLYN

Sponsored By:
SPLASH OUT
BATHROOMS



UNA LUE

Sponsored By:
270 CLIMBING

**Contact
commercial@ctwomenfc.com
to sponsor your favourite
player today!**



UPCOMING FIXTURES



**OXFORD UTD
WOMEN**

SUNDAY 2 FEBRUARY
14:00



**BILLERICAY
TOWN WOMEN**

SUNDAY 9 FEBRUARY
14:00



**PUCKLECHURCH
WOMEN**

SUNDAY 16 FEBRUARY
14:00



**WATFORD
WOMEN**

SUNDAY 23 FEBRUARY
14:00



Tickets available at:

app.fanbaseclub.com/club/cheltenham-town-women-fc

Scan to purchase tickets

Fixture details subject to change

ROAD TO THE PLATE SEMI-FINAL

The FA Women's National League Plate journey so far...

FIRST ROUND

**BOLDMERE ST. MICHAELS WOMEN 1
CHELTENHAM TOWN WOMEN 4
SUNDAY 29 SEPTEMBER 2024
BOLDMERE COMMUNITY STADIUM**

BOLDMERE: Glass, Ackroyd (Bojang 60), Billingsley (Astell 75), Cooper, Edwards, Formaston, Gregory (Stokes 80), Kirk (Ruparella 60), Straker (Abdallah 65), Towers, Travers.

CHELTENHAM: Pugh-Jones; Llewellyn (Norman 66), Owen, Wellesley-Davies (Finch 81); Bell, Collis, Pemberton, Greenwood (Hale 75), Hateley; Pengelly (North 75), Lue (Leach 63).

For Cheltenham Town Women, the FA Women's National League Plate journey started away to Boldmere St. Michaels of the FA WNL Division One Midlands.

Goals from Libby Bell, Emily Owen and Connie Pengelly gave the visitors a solid lead at the break, before Grace Gregory pulled one back for Boldmere five minutes into the second half. Doris Greenwood would restore Cheltenham's three-goal gap just before the hour mark.

Cheltenham took an early lead when Bell's cross looped over Boldmere 'keeper Grace

Glass and found its way into the net. Only minutes later, the lead was doubled after Pengelly forced a handball in the box, gifting Cheltenham a penalty.

Owen calmly stepped up and slotted the spot kick to double the away side's lead.

From this point, the game settled down, with both sides only producing half-chances. Janelle Straker forced a great save from Carys Pugh-Jones with a shot across the face of goal, before some great play from Pengelly, Una Lue, and Bell got Cheltenham moving up the pitch. Ella Pemberton almost finished the move with a lovely half-volley but it was saved by Glass.

Six minutes before half time, Pengelly bagged her first goal for the club. Lue combined with Pemberton who released Pengelly, allowing the striker to prod the ball past Glass to give Cheltenham a three-goal lead.

Boldmere started the second half better and quickly pulled one back through Gregory's outstanding long-range effort. The closing of the gap didn't last long however, as just ten minutes later, a fantastic pass by Lue found the tenacious midfielder, who smashed it past Glass for her third goal of the season.

The remainder of the game was quieter than the first half, with little chances for either side. Abbey Hateley almost made it five for the visitors, firing a great long-range effort, but it was parried away by Glass.

With the defences standing strong and neither side able to add to their tally, Cheltenham saw the remainder of the contest out professionally, to book their place in the Second Round, where they would face a team they'd already played in pre-season.



SECOND ROUND
CHELTENHAM TOWN WOMEN 2
WOLVERHAMPTON
WANDERERS WOMEN 1
SUNDAY 20 OCTOBER
KAYTE LANE

CHELTENHAM: Pugh-Jones, Llewellyn, Wellesley-Davies, Owen; Bell (Trinci 67), Collis, Liggett, Greenwood, Hateley; Attenborough (Leach 85), Lue (Butcher 75).

WOLVES: Clarke, Morphet, J. Cross (Toussaint 60), Loydon (Merrick 60), Hughes, Banaras (Hiscox 70), Fryer (Johnson 75), Anderson, Denham (Greengrass 60), Roberts, Jenner.

High-flying Wolves Women were The Robinesses next opponents, to continue the League Plates' West Midlands flavour.

It didn't take long for league form to go out of the window following a quickfire double for Cheltenham, with Maisy Collis and Emily Owen putting Cheltenham in a strong position, before Wolves captain, Anna Morphet, pulled one back for the visitors.

The game started slowly with both sides sizing up the opposition, before business picked up after just 14 minutes. After collecting a Wolves clearance on the edge of the visitors' penalty area, Collis rifled a shot into the top corner to put smiles on Cheltenham fans' faces.

Buoyed by this early lead, Cheltenham continued to pressure the visitors. Following the chaos of a goalmouth scramble, Owen found a notch of space to poke the ball over the line and double the home side's lead.

A shocked Wolves set to work immediately, playing with urgency and pace and winning a free-kick on the edge of the Cheltenham box. Morphet would step up and slot the set-piece low past Pugh-Jones, from just 20 yards.



Despite the exciting start, the action would simmer down for the remainder of the half, with Cheltenham holding their lead at the break.

Cheltenham fired out of the blocks in the second half, with Lacy-Jai Liggett almost adding a third with a low drive across the face of goal, but Charlotte Clarke was able to get a hand to it.

Wolves continued to hunt down an equaliser, with Morphet again causing issues. A fine looping pass almost put her through on goal, but she couldn't control the ball under pressure to add to Wolves' frustrations.

Wolves would continue to force the issue, but their urgency came at a price, as they squandered a number of goalmouth opportunities, including a dangerous Beth Merrick free-kick.

With Wolves hammering on the door, Cheltenham would dig deep in the dying moments to keep them out and book another showing in the Quarter-Finals.

QUARTER-FINAL
STOCKPORT COUNTY LADIES 1
CHELTENHAM TOWN WOMEN 2^{AET}
SUNDAY 1 DECEMBER
STOCKPORT SPORTS COMPLEX

STOCKPORT: Farrell; Newton, Lancaster, Davies, Owen, Greenhalgh, Bentley (Rathburn 67), Bradshaw (Brady 77), Wilson, Hamer, Watson (Nsangou 67).

CHELTENHAM: Pugh-Jones, Finch (Llewellyn 45), Wellesley-Davies, Owen; Bell, Collis, Greenwood, Attenborough (Butcher 65), Trinci (Hateley 80); Pemberton, Lue.

Due to geographical location, Cheltenham would be entered into the Northern draw for the Quarter-Final, being drawn away to Stockport County Ladies of the FA WNL Division One North.

After a first half stalemate, an Elizabeth Hamer free-kick would open the scoring for Stockport, with a late equaliser from Lilly Wellesley-Davies keeping Cheltenham in the game and forcing Extra Time.

With 95 minutes of action, Collis was on hand to overturn the deficit and put Cheltenham into the Semi-Final.

Stockport had the better chances in the first half, asking questions of Cheltenham with numerous corners, and forcing Pugh-Jones into multiple superb stops from distance.

Lue created Cheltenham's first real chance after 22 minutes, as some good play set up Doris Greenwood to demand a good save from Stockport 'keeper Lucy Farrell.

A momentary lapse in concentration almost opened the door for Stockport, but Pugh-Jones' quick reflexes kept the score level at the break.

Whatever was said at half time had an impact, as Cheltenham controlled the start of the second half. Despite this early dominance however, they found themselves a goal down on 54 minutes.

Stockport won a free-kick just outside the Cheltenham box, with Hamer dispatching her shot superbly into the top left hand corner.

Cheltenham would respond quickly, with Owen hitting the post with a header before a last-ditch tackle stopped Lue from going through on goal.

Cheltenham's pressure would eventually pay off with substitute Henna Butcher winning a corner. After the first attempt was deflected out for another corner, Wellesley-Davies beat her marker and fired a bullet-header into the corner of the net.

Lue would have a fantastic chance to put the game to bed right at the death but her shot cleared the crossbar.

Early into extra-time, Collis, like she had done against Wolves, found the net with a stunning long-range effort to give Cheltenham the advantage.

With time running out, Cheltenham kept their cool, locking down their defences and closing the game out to reach the Semi-Final for the second time in Club history.



MARC PAYNE

PHOTOGRAPHY

I AM AN EXPERIENCED PHOTOGRAPHER BASED IN STROUD WITH OVER 5 YEARS EXPERIENCE CAPTURING A WIDE VARIETY OF PHOTOGRAPHY WITH A DIPLOMA IN PHOTOGRAPHY



PORTRAITS, WEDDINGS & SPORTS

07300562066

[HTTPS://LINKTR.EE/MARCPAYNEPHOTOGRAPHER](https://linktr.ee/marcpaynephotographer)



FIXTURES AND RESULTS

2024/25 Competitive Fixtures



DATE	OPPOSITION	COMP.	ATT.	POM
AUG				
SUN 18	H PLYMOUTH ARGYLE WOMEN	FAWNLSP	4-0	131 LIGGETT
Sun 25	A MK Dons Women	FAWNLSP	5-0	100 Attenborough
Thur 29	A Worcester City Women	WNLC DR	0-1	181 Owen
SEPT				
SUN 1	H AFC WIMBLEDON WOMEN	FAWNLSP	0-3	137 LUE
Sun 8	A Billericay Town Women	FAWNLSP	1-2	183 Attenborough
SUN 15	H HASHTAG UNITED WOMEN	FAWNLSP	1-1	110 BUTCHER
Sun 22	A Watford FC Women	FAWNLSP	0-2	116 Llewellyn
THUR 26	H GWALIA UNITED	FAWNLSP	2-2	113 LIGGETT
Sun 29	A Boldmere St. Michaels Women	WNLP R1	4-1	122 Owen
OCT				
Sun 6	A Oxford United Women	FAWNLSP	0-3	168 Butcher
SUN 13	H EXETER CITY WOMEN	FAWNLSP	0-3	117 LLEWELLYN
SUN 20	H WOLVERHAMPTON WANDERERS	WNLP R2	2-1	153 OWEN
Sun 27	A Lewes FC Women	FAWNLSP	0-3	591 Lue
NOV				
SUN 3	H YEOVIL TOWN WOMEN	AWFAC R1	7-0	103 TRINCI
SUN 10	H IPSWICH TOWN WOMEN	FAWNLSP	0-7	203 BUTCHER
Sun 17	A Plymouth Argyle Women	FAWNLSP	2-0	173 Llewellyn
SUN 24	H MONEYFIELDS WOMEN	AWFAC R2	2-1	76 SMITH
DEC				
Sun 1	A Stockport County Ladies	WNLP QF	2-1 ^{act}	77 Wellesley-Davies
SUN 8	H NORWICH CITY	AWFAC R3	2-1 ^{act}	168 BUTCHER
SUN 15	H MK DONS WOMEN	FAWNLSP	5-1	120 OWEN
JAN				
SUN 12	H WOLVERHAMPTON WANDERERS	AWFAC R4	0-2	576 OWEN
Sun 19	A Bristol Rovers Women	GFA SWC	1-0	90 Collis
SUN 26	H SOUTHAMPTON FC ACADEMY	WNLP SF	14:00	
FEB				
SUN 2	H OXFORD UNITED WOMEN	FAWNLSP	14:00	
SUN 9	H BILLERICAY TOWN WOMEN	FAWNLSP	14:00	
Wed 12	A Gwalia United	FAWNLSP	19:45	
SUN 16	H PUCKLECHURCH WOMEN	GFA SWC	14:00	
SUN 23	H WATFORD FC WOMEN	FAWNLSP	14:00	
MAR				
Sun 5	A AFC Wimbledon Women	FAWNLSP	14:00	
Sun 9	A Hashtag United Women	FAWNLSP	14:00	
Sun 23	A Exeter City Women	FAWNLSP	14:00	
APR				
SUN 13	H LEWES FC WOMEN	FAWNLSP	14:00	
Sun 27	A Ipswich Town Women	FAWNLSP	14:00	

Fixture details subject to change.

POM: Player of the Match (as chosen by poll, match sponsor, or opposition where applicable).

FAWNLSP: FA Women's National League Southern Premier

AWFAC: Adobe Women's FA Cup

WNLC / WNLP: FA Women's National League Cup/ Plate

GFA SWC: Gloucestershire FA Senior Women's Cup



TODAY'S TEAMS

CHELTENHAM TOWN WFC

- 01 Mia Smith
- 02 Anais Trinci
- 03 Abbey Hateley
- 04 Holly Finch
- 05 Courtney Jones
- 06 Maisy Collis
- 08 Megan Attenborough
- 10 Libby Bell
- 11 Esme Harris
- 12 Henna Butcher
- 13 Ffion Llewellyn
- 14 Lilly Wellesley-Davies
- 15 **Emily Owen (c)**
- 16 Ella Pemberton
- 17 Doris Greenwood
- 18 Brooke Ellis
- 19 Jessica Leach
- 20 Issy Newns
- 21 Una Lue
- 22 Kaitlyn Morgan-Hemmens
- 30 Carys Pugh-Jones

SOUTHAMPTON FC ACADEMY

- Kody Cornish
- Ella Pettit
- Kayleigh Prout
- Daisy Beard
- Sky Bedwell
- Lucy Blumire
- Safia Bolton
- Kaylee Buckingham
- Lucy Chads
- Grace Chester
- Kaitlyn Cousens
- Georgia Galley
- Sherise Henry
- Madeline Hotston
- Jasmine Lampard
- Anya Lucas
- Sofia Mallon
- Natalie Matthews
- Kayla Nohasiarisoa
- Mollie Peachey
- Esta Roberts
- Summer Robins
- Dream Surin
- Natasha Udebhulu
- Isabel Watts



@CTWomenFC