

THE

OFFICIAL MATCHDAY MAGAZINE OF CHELTENHAM TOWN WOMEN FC | ISSUE 12

ROBINESSES REVIEW



CHELTENHAM TOWN WFC V WOLVERHAMPTON WANDERERS WFC
ADOBE WOMEN'S FA CUP FOURTH ROUND
SUNDAY JANUARY 12, 2025 | 2:00PM

£2.00



CHELTENHAM TOWN WOMEN FC

VOLUNTEERS NEEDED!

Interested?

Contact us at
info@ctwomenfc.com
or via The Club website

WWW.CTWOMENFC.COM

WE NEED HELP WITH:

- Club Event Organisation
- Home Attendance Development
- Match Day Mascot Liaison
- Club Shop Assistance
- Turnstile Operation/Assistance
- Raffle Ticket Sales/Assistance

ANDY LIDDLE

• Cheltenham Town Women FC's Chairman shares his thoughts ahead of today's fixture



Good afternoon, a very happy New Year, and a very warm welcome back to Kayte Lane for this afternoon's Fourth Round Adobe Women's FA Cup tie against Wolves Women. I hope you all had a great break with family, were able to recharge a little, and are looking forward to the remaining fixtures.

Of course, with it being January now, our usual range of hats, scarfs and gloves are available to keep you warm, and a limited-edition drinks bottle has been added, either purchase today or via the online shop ctffc.myshopify.com/

The break arguably came at the wrong time for us as we went five unbeaten at the end of 2024, but that means we remain in all three cup competitions and go into 2025 looking forward to the Fourth Round of the Women's FA Cup... a first for us, and a true measure of progress.

We are delighted to have Personal Training Education Ltd as today's Match Day Sponsor, do please contact Ryan on 07376 060313 if you're thinking of undertaking any fitness courses.

Wolves have lost just the one game in the league all season and are just a point off Nottingham Forest in top spot in the FA WNL Northern Premier. They go into today's game as favourites... but this is the FA Cup, home of giant killings!

We welcome their players, staff and fans along to Kayte Lane for what promises to be an exciting game.

We are away to Bristol Rovers at the Memorial Stadium next week before returning on Sunday 26th of January for the League Plate Semi-Final with Southampton Academy.

Finally, as I close out my notes, it is great to have 14 of our Under 10s here this afternoon as mascots under coach James' expert guidance, we hope you all have a fabulous time with us.

Talking of being with us, also here this afternoon is a number of representatives of Mira, our front shirt sponsor. We are hugely appreciative of your ongoing support.

Thank you all, as always, for your support and have a great 2025.

Enjoy the game

**Andy Liddle,
Chairman**





- The Robinesses Manager looks ahead to today's game...

Good afternoon, and welcome to Kayte Lane for today's Adobe Women's FA Cup Fourth Round tie against Wolves Women. I'd like to extend a warm welcome to Macca, his staff, players, and all the supporters of Wolves.

It's been an exciting few weeks for us prior to the Christmas break, with some fantastic results under our belt. Our 5-1 victory over MK Dons in the league was an important end to the calendar year, showing our ruthless side within the first half to dominate and ultimately close the game out early.

Having been through extra time the week prior, against Stockport County, the true resilience and grit we showed, particularly in the latter stages, were truly impressive. It's moments like that that highlight the character within this squad to come through and create history with our 2-1 win against Norwich in the last round to set up today's match, which promises to be a thrilling encounter.

Looking ahead, we know this is an important month in both the league and the cup, and while we've made good progress, we must remain focused. This month allows us "free-hits" having made history already, to see if we

can go one step further. It's a product of the hard work and sacrifice of the previous months that we're in such a position that January is filled with, today's Fourth Round of the Women's FA Cup and the Semi-Final of the WNL Plate. We'll need the same level of intensity, commitment, and teamwork that's been our trademark so far, and we're confident the team is more than ready to rise to the challenge.

So, let's get behind the girls today, keep the momentum going, and push for another strong result. There's a lot to play for, and we're excited for what's to come.

Enjoy the match.

Tom



**FINANCIAL
FITNESS GROUP**

Proud Partners of
Gloucestershire's Largest Women's Football Club



**CHELTEMHAM TOWN
WOMEN FC**

INTRODUCING WOLVES WOMEN

A focus on today's opposition



Wolves Women entered the world of Women's Football in 1975 as Heathfield Rovers. The following year they became Wolverhampton & Wednesbury LFC, before settling on Wolverhampton Ladies.

They would be allowed to use the Wolverhampton Wanderers name just before the 1993/94 season and would be promoted to the FA Women's Premier League National Division at the end of that campaign. This spell in the top flight of English Women's Football only lasted a couple of seasons however, before the club were relegated back to the FA WPL Northern Division.

In May 2001, Dennis Mortimer was named manager and Wolves would go on to challenge for promotion in each of his three seasons at the helm before his departure in 2004. In 2004/05 Wolves Women finished runners-up to Sunderland but lost star players, England international, Emily Westwood, and Amy McCann, who would later go on to represent Northern Ireland, to Everton during the off-season. This would have a big impact, as the following season Wolves would go on to finish sixth in the league, with six wins, ten draws and six losses.

The "Wolfettes" would suffer relegation in 2006/07, finishing 11th in the league and dropping into the Midlands Combination Women's Football League, the then-third tier of Women's Football. Despite the setback, they were bolstered in the summer, receiving full affiliation with Wolverhampton Wanderers FC and forging a partnership with Wolverhampton College.

A successful 2011/12 would see the club win the Midland Combination, losing just a single

game all season. They would cap off their superb season with a 2-1 win over Stoke in the League Cup Final to complete the double.

After back-to-back midtable finishes in the second tier, Wolves would be relegated again in 2014/15 after a disastrous campaign saw them finish bottom of the FA WPL North, dropping into the still-young FA WPL Midlands Division, the new fourth tier of the Women's Football pyramid. New manager, Steve Cullis, would be brought in ahead of the 2015/16 campaign, charged with the task of instantly bouncing back.

In October 2016, Cullis was moved to a new role of Technical Director for the club's Regional Talent Centre, with Tim Dudding being named as his replacement. Dudding led a successful campaign, managing to fend off Loughborough Foxes to clinch the FA WPL Midlands title.

Following a poor start to 2017/18, current manager, Dan McNamara, was brought in but Wolves couldn't avoid the drop, being relegated agonisingly on goal difference back into the re-branded FA Women's National League Division One Midlands.

At the end of 2020/21, Wolves were promoted via "upward movement" to the FA WNL Northern Premier. Their continued success saw them finish top of the league, securing a play-off place, this time to enter the Women's Championship. They would go on to lose the play-off final 1-0 to FA WNL South champions, Southampton FC.

Since then, Wolves have been a constant fixture in the FA WNL North promotion chase, finishing second in 2022/23, and fourth in 2023/24.

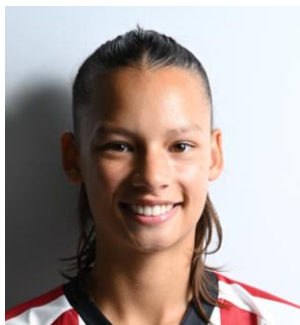




Image provided by Marc Payne Photography

UNA LUE INTERVIEW

Robinesses striker talks to Owen Mason



Cheltenham Town Women's top goalscorer Una Lue has said the team "will go into this game like any other, 100% effort" as we prepare to

take on Wolves Women in the Fourth Round of the Adobe Women's FA Cup.

A place in the Last 16 is up for grabs for both sides at Kayte Lane this afternoon, and the 18-year-old was delighted to be a big part of reaching this stage, with four goals scored in the competition so far.

"Goals in this competition mean a lot to me, and it would mean a lot to get more goals for this club.

"I'm taking it game by game

and focusing on my performances. I'm pleased with the goals and looking to get more in this half of the season!" Lue said.

Cheltenham have made history by reaching the Fourth Round for the first time ever, with a 7-0 win over Tier Six Yeovil Town, and 2-1 wins over Tier Four sides Moneyfields and Norwich City, with Lue grabbing a brace in our Third-Round win over the Canaries.

Lue couldn't wait for this

afternoon, and emphasised how positive the mood has been in the Robinesses camp, as a win this afternoon would make it six wins in a row in all competitions.

"It's a massive achievement for the club, in terms of Sunday, we will go into it like any other game, putting in 100%! It's going to be super exciting and a great opportunity."

Lue was also quizzed on who she'd like to draw if the Robinesses get to the next Round, and she said, "I think getting Man City, Arsenal, or Chelsea at home would be such a cool thing to happen in my hometown!"

Finally, Lue was asked about a big month ahead, as after their visit of Wolves to Kayte Lane, Tom Davies' side visit Bristol Rovers in the Gloucestershire FA Senior Women's Cup, and a week later they welcome Southampton Academy in the FA Women's National League Plate Semi-Final.

"It's super important for us to do well in these fixtures, we know what we are capable of, and we will be working hard in training to achieve what we deserve!" Lue concluded.

Image provided by Marc Payne Photography





WINNERS DO MORE

OVER 30 CLASSES A WEEK
 LIMITED CLASS SIZES - SO YOU GET THE ATTENTION YOU NEED
 FULLY INCLUSIVE WORKOUTS - WORK AROUND YOUR LIMITATIONS
 JUST MINUTES FROM GLOUCESTER QUAYS

CROSSFITNAVALIA.COM

OPEN 7 DAYS A WEEK

MONDAY - THURSDAY: 06:00 - 10:30 14:00 - 20:00
 FRIDAY: 06:00 - 10:30 14:00 - 19:00
 SATURDAY & SUNDAY: 08:00 - 13:00

UNIT 2 VENTURE BUSINESS CENTRE
 MADLEAZE ROAD
 GLOUCESTER, GL1 5SJ

UPCOMING FIXTURES



SOUTHAMPTON ACADEMY

SUNDAY 26 JANUARY
 14:00



OXFORD UTD WOMEN

SUNDAY 2 FEBRUARY
 14:00



BILLERICAY TOWN WOMEN

SUNDAY 9 FEBRUARY
 14:00



PUCKLECHURCH WOMEN

SUNDAY 16 FEBRUARY
 14:00



WATFORD WOMEN

SUNDAY 23 FEBRUARY
 14:00



Scan to purchase tickets

Tickets available at:

app.fanbaseclub.com/club/cheltenham-town-women-fc

Fixture details subject to change

JOIN THE LIONESSES SUPPORTERS CLUB



Get access to exclusive competitions,
priority tickets and the latest England news.

[THEFA.COM/JOINLSC](https://www.thefa.com/joinlsc)



LIONESSES
SUPPORTERS CLUB



ROAD TO THE FOURTH ROUND

The Adobe Women's FA Cup journey so far...



Courtesy of Jason (@Zider_Red on Twitter)

FIRST ROUND
CHELTENHAM TOWN WOMEN 7
YEOVIL TOWN WOMEN 0
SUNDAY 3 NOVEMBER 2024
KAYTE LANE

CHELTENHAM: Smith (Pugh-Jones 46); Finch, Owen, Wellesley-Davies; Trinci, Collis (Liggett 62), Butcher (Attenborough 62), Greenwood, Hateley (Bell 62); Pemberton, Lue (Leach 46).

YEOVIL: Bishop, Vernon, D. Evans (Bateman 82), Ball, Brazell (McManus 60), Wensley, Miles, Davenport (East 82), Will, Carslake, Hodge (Nicholls 19 (Spearing 70)).

Cheltenham Town Women launched their Adobe Women's FA Cup campaign with a resounding 7-0 victory over Yeovil Town Women.

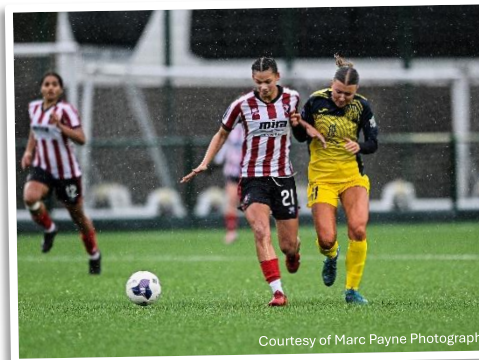
Cheltenham secured their dominant win with goals from Abbey Hateley, a Yeovil own goal, Una Lue, Anais Trinci, Libby Bell, Jess Leach and Cheltenham captain, Emily Owen,

The Robinesses controlled the early goings before a nasty injury to Yeovil's Jess Hodge saw the game halted for nearly ten minutes. The Glovers striker went down while chasing the ball and would leave the pitch on a stretcher, later to be diagnosed with an ACL and Meniscus tear.

Once play resumed, Cheltenham tried to create a chance with Trinci finding Lue but a last-ditch tackle thwarted their effort. Moments later Hateley opened the scoring after a pinpoint pass to find her from Owen. It was her first goal for the club since joining from Loughborough Lightning in the summer.

It was quickly 2-0 after Hateley fired a low drive into the middle which ricocheted off Glovers defender Emma Brazell, and past 'keeper Hannah Bishop.

As Cheltenham threatened to run riot late in the half, and after having an effort disallowed for offside moments earlier, Lue pounced on a loose pass back to Bishop to give Cheltenham a commanding 3-0 lead at the interval.



Courtesy of Marc Payne Photography



Courtesy of Marc Payne Photography

Things started evenly in the Second Half, with Doris Greenwood having the first real chance of the half, cannoning her shot off the post.

20 minutes from time, Trinci also acquired her first goal for the club. A great cross from Libby Bell to Leach was half cleared, allowing Trinci to rifle her shot past Bishop.

Leach came close to making it 5-0 shortly after, controlling the ball fantastically only to be denied by the crossbar.

Bell then managed to get the Robinesses' fifth, after Lacy-Jai Liggett's shot was saved well by Bishop. Bell gathered the ball on the edge of the area and curled it into the top corner.

Goal scorer turned provider with five minutes to go as Bell found Leach in the area, who's close range effort found the net.

Robinesses skipper Owen rounded it off on her 75th Cheltenham appearance, as her deflected effort made it Seventh Heaven for Cheltenham.

SECOND ROUND
CHELTENHAM TOWN WOMEN 2
MONEYFIELDS WOMEN 1
SUNDAY 24 NOVEMBER 2024
KAYTE LANE

CHELTENHAM: Smith; Finch, Owen, Llewellyn; Trinci (Bell 65), Collis, Attenborough, Butcher, Hateley (Wellesley-Davies 60); Pemberton (Greenwood 65), Lue

MONEYFIELDS: Luce, Moody, Howden (Garcia 72), Granger, Butterworth, Albuery, Tonks, Wood, Fox (Fuller 46), Jeal (Hill 88), Wilson-Wilton

Next up for The Robinesses was FA Women's National League Division One South-West side Moneyfields.

The game started with a close contest, as both sides were forced to adjust to the horrendous elements with rain and strong winds making passing and controlling the ball challenging.

With the wind at their backs, Moneyfields peppered the Cheltenham box with crosses early, with Smith on hand to deal with them under pressure.

Cheltenham would rely on direct play, with Ella Pemberton, Henna Butcher and Una Lue combining well to cause Moneyfields issues.

Despite numerous chances for either side, the teams went in even at the break, having battled the conditions as much as they had each other.

Moneyfields manager Karl Watson made a tactical change at half time with Kim Fuller replacing Megan Fox, and the change made an immediate difference.

Just five minutes into the Second Half, the newly introduced Fuller floated a cross for Charley Wilson-Wilton to power a header at goal, with Mia Smith able to get a hand to it. Unfortunately for the Cheltenham 'keeper, the ball rebounded back off the crossbar allowing the Moneys' striker to nod home.

With Cheltenham pushing the issue and taking the game to the visitors, Lue would pull away from her marker, before linking well with Butcher who was fouled on the edge of the box. winning a free-kick. Ffion Llewellyn stepped up and curled the ball around the wall, beating Luce at her left-hand post.



With three minutes left, in a moment that Luce would rather forget, a flicked header from Lue was spilt directly in front of the on-rushing Butcher, who rounded the Moneys 'keeper, controlled the loose ball, and squared it to Lue to tap home from almost point-blank range.

Moneyfields refused to stay down, however, with Fuller asking questions. A drilled shot right at the death forced Smith into another superb stop, low to her left, to ensure Cheltenham advanced to the Third Round.

**THIRD ROUND
CHELTENHAM TOWN WOMEN 2_{AET}
NORWICH CITY WOMEN 1
SUNDAY 8 DECEMBER 2024
KAYTE LANE**

CHELTENHAM: Smith; Llewellyn, Owen, Wellesley-Davies; Bell, Collis (Greenwood 71), Attenborough, Butcher, Hateley (Trinci 71); Pemberton, Lue

NORWICH: Quantrill; Flye (Cook 105), Morran, Strauss; Daviss (Knights 105), Kennard, Todd, Moore (Bishop 61); Tomlinson (Hailes 61), Shaw (Symonds 61), Snelling.

In only The Club's fourth time participating in the Third Round Proper, the Robinesses welcomed Norwich City Women to Kayte Lane.

Una Lue opened the scoring for Tom Davies' side early in the second half, but the Canaries replied with a penalty from Hope Strauss. The deadlock lasted until Full Time, forcing Cheltenham to go to extra time in back-to-back weekends, with Lue getting her second of the game after some superb work by Henna Butcher.

Norwich threatened to get back into it as the clock ticked down, and almost forced a penalty shootout, but Cheltenham held firm to reach the

Fourth Round for the first time in their history.

Despite being a division below, it was Andy Cook's Canaries who had the better chance of the first half, with Natasha Snelling rattling the crossbar after taking on a rebound from a free-kick. Mia Smith was beaten in the Robinesses net, however the ball miraculously bounced off the goal line.

Defender Lilly Wellesley-Davies was cautioned for the hosts early on, and the resulting free kick was headed away from danger from Libby Bell.

Una Lue made her usual dangerous runs into the box, but on this occasion she was offside. Lue and Butcher almost wrong-footed Norwich keeper Sarah Quantrill, but she was able to clear away the danger.

Cheltenham then grew into the game, as Butcher tested the gloves of Quantrill, who put it out for a corner. Bell almost opened the scoring before the break, but her effort blazed over the bar.

Snelling was dangerous again for the visitors after the interval, as she fired just wide of Smith's post.

The deadlock was broken 53 minutes in, as Butcher made a fantastic pass to find Lue, who made no mistake in striking it past the Canaries' goalkeeper.

Cook's side didn't give the Kayte Lane crowd too much time to celebrate however, firing out of the blocks from the restart and earning a penalty, with Lauren Tomlinson being brought down in the area. Hope Strauss slotted it past Smith and levelled it for the FA WNL Division One South East side.

Cheltenham heads refused to drop though, as Bell's pinpoint cross found Lue who headed agonisingly wide.



The game became extremely end-to-end, and substitute Doris Greenwood was denied a certain goal, thanks to some last ditch defending from Ellie Bishop.

With neither side able to find a winner, the game went to Extra Time, and it didn't take long for Cheltenham's top scorer to change the game again. Just like the first goal, Butcher found Lue, who hit it straight past Quantrill, to claim her 10th goal of the season.

Having restored the lead, Cheltenham looked to hunker down. Robinesses Captain Emily Owen got booked for time wasting, and moments later Norwich hit the bar.

In the final minute of Extra Time, it was carnage in the Cheltenham box as Norwich scrambled for an equaliser. Some incredible last ditch defending from Bell and birthday girl Ffion Llewellyn denied any hope of the Canaries forcing a shootout.

There were scenes of pandemonium for the Cheltenham fans as the long-awaited Full-Time whistle rang out, as the Robinesses made history, securing a place in the Fourth Round Proper for the first time ever, having fallen at the Third Round hurdle on three separate occasions.



ROBINESSES SHOP

ctlfcc.myshopify.com

Scan here to access the shop



BRAND NEW!
**CTWFC
BOTTLE**
£14



CTWFC Mug
£6.50



CTWFC Hat
£13.50



CTWFC Scarf
£13.50



BECOME A PERSONAL TRAINER

- ✓ Level 2 & 3 Personal Training Courses
- ✓ Combining theory with real-life experience
- ✓ Teachers with 20+ years in the industry
- ✓ Flexible payment scheme
- ✓ Learn hands-on skills over a 10-week course

Courses start in February. Book Your Place:

07376 060314

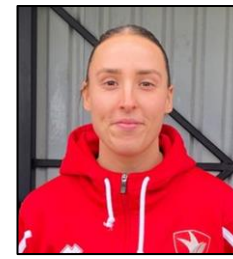
courses@personaltrainingeducation.co.uk



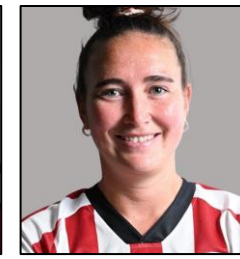
CHELTHENHAM TOWN WOMEN FC SQUAD 2024/25



**KAITLYN
MORGAN-HEMMENS**



ISSY NEWS



EMILY OWEN



ELLA PEMBERTON



MEG ATTENBOROUGH



LIBBY BELL

Sponsored By:
MORGAN & CARTER
POWELL



HENNA BUTCHER



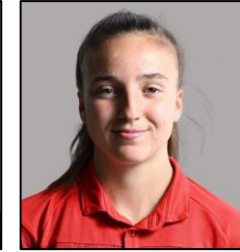
MAISY COLLIS



CARYS PUGH-JONES



MIA SMITH



ANAIS TRINCI

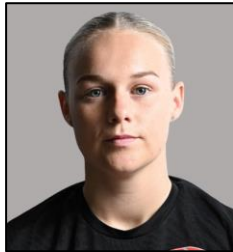


LILLY WELLESLEY-DAVIES

Sponsored By:
BLADES BIKES



BROOKE ELLIS



HOLLY FINCH



DORIS GREENWOOD

Sponsored By:
ADNET PRECISION
ENGINEERING LTD



OUT ON LOAN

ESME HARRIS

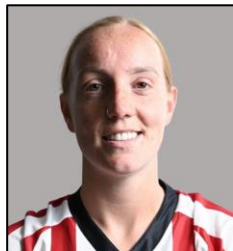


ABBEY HATELEY



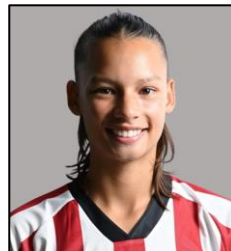
OUT ON LOAN

JESSICA LEACH



FFION LLEWELLYN

Sponsored By:
SPLASH OUT
BATHROOMS



UNA LUE

Sponsored By:
270 CLIMBING

**Contact
commercial@ctwomenfc.com
to sponsor your favourite
player today!**





MARC PAYNE

PHOTOGRAPHY

I AM AN EXPERIENCED PHOTOGRAPHER BASED IN STROUD WITH OVER 5 YEARS EXPERIENCE CAPTURING A WIDE VARIETY OF PHOTOGRAPHY WITH A DIPLOMA IN PHOTOGRAPHY



PORTRAITS, WEDDINGS & SPORTS

07300562066

[HTTPS://LINKTR.EE/MARCPAYNEPHOTOGRAPHER](https://linktr.ee/marcpaynephotographer)



FIXTURES AND RESULTS

2024/25 Competitive Fixtures



DATE	OPPOSITION	COMP.	ATT.	POM
AUG				
SUN 18	H PLYMOUTH ARGYLE WOMEN	FAWNLSP	4-0	131 LIGGETT
Sun 25	A MK Dons Women	FAWNLSP	5-0	100 Attenborough
Thur 29	A Worcester City Women	WNLC DR	0-1	181 Owen
SEPT				
SUN 1	H AFC WIMBLEDON WOMEN	FAWNLSP	0-3	137 LUE
Sun 8	A Billericay Town Women	FAWNLSP	1-2	183 Attenborough
SUN 15	H HASHTAG UNITED WOMEN	FAWNLSP	1-1	110 BUTCHER
Sun 22	A Watford FC Women	FAWNLSP	0-2	116 Llewellyn
THUR 26	H GWALIA UNITED	FAWNLSP	2-2	113 LIGGETT
Sun 29	A Boldmere St. Michaels Women	WNLP R1	4-1	122 Owen
OCT				
Sun 6	A Oxford United Women	FAWNLSP	0-3	168 Butcher
SUN 13	H EXETER CITY WOMEN	FAWNLSP	0-3	117 LLEWELLYN
SUN 20	H WOLVERHAMPTON WANDERERS	WNLP R2	2-1	153 OWEN
Sun 27	A Lewes FC Women	FAWNLSP	0-3	591 Lue
NOV				
SUN 3	H YEOVIL TOWN WOMEN	AWFAC R1	7-0	103 TRINCI
SUN 10	H IPSWICH TOWN WOMEN	FAWNLSP	0-7	203 BUTCHER
Sun 17	A Plymouth Argyle Women	FAWNLSP	2-0	173 Llewellyn
SUN 24	H MONEYFIELDS WOMEN	AWFAC R2	2-1	76 SMITH
DEC				
Sun 1	A Stockport County Ladies	WNLP QF	2-1 ^{act}	77 Wellesley-Davies
SUN 8	H NORWICH CITY	AWFAC R3	2-1 ^{act}	168 BUTCHER
SUN 15	H MK DONS WOMEN	FAWNLSP	5-1	120 OWEN
JAN				
SUN 12	H WOLVERHAMPTON WANDERERS	AWFAC R4	14:00	
Sun 19	A Bristol Rovers Women	GFA SWC	14:00	
SUN 26	H SOUTHAMPTON FC ACADEMY	WNLP SF	14:00	
FEB				
SUN 2	H OXFORD UNITED WOMEN	FAWNLSP	14:00	
SUN 9	H BILLERICAY TOWN WOMEN	FAWNLSP	14:00	
Wed 12	A Gwalia United	FAWNLSP	19:45	
SUN 16	H PUCKLECHURCH WOMEN	GFA SWC	14:00	
SUN 23	H WATFORD FC WOMEN	FAWNLSP	14:00	
MAR				
Sun 2	A AFC Wimbledon Women	FAWNLSP	14:00	
Sun 9	A Hashtag United Women	FAWNLSP	14:00	
Sun 23	A Exeter City Women	FAWNLSP	14:00	
APR				
SUN 13	H LEWES FC WOMEN	FAWNLSP	14:00	
Sun 27	A Ipswich Town Women	FAWNLSP	14:00	

Fixture details subject to change.

POM: Player of the Match (as chosen by poll, match sponsor, or opposition where applicable).

FAWNLSP: FA Women's National League Southern Premier

AWFAC: Adobe Women's FA Cup

WNLC / WNLP: FA Women's National League Cup/ Plate

GFA SWC: Gloucestershire FA Senior Women's Cup



TODAY'S TEAMS

CHELTENHAM TOWN WFC

- 01 Mia Smith
- 02 Anais Trinci
- 03 Abbey Hateley
- 04 Holly Finch
- 06 Maisy Collis
- 08 Megan Attenborough
- 10 Libby Bell
- 11 Esme Harris
- 12 Henna Butcher
- 13 Ffion Llewellyn
- 14 Lilly Wellesley-Davies
- 15 Emily Owen (c)
- 16 Ella Pemberton
- 17 Doris Greenwood
- 18 Brooke Ellis
- 19 Jessica Leach
- 20 Issy Newns
- 21 Una Lue
- 22 Kaitlyn Morgan-Hemmens
- 30 Carys Pugh-Jones

WOLVERHAMPTON WANDERERS WFC

- 03 Anna Morphet (c)
- 04 Summer Holmes
- 05 Emma Cross
- 07 Tammi George
- 08 Merrick Will
- 09 Jade Cross
- 10 Abi Loydon
- 11 Amber Hughes
- 12 Charlotte Greengrass
- 13 Bec Thomas
- 14 Martha MacPhail
- 16 Racheal Quigley
- 17 Katie Johnson
- 18 Hannah Fryer
- 19 Becky Anderson
- 20 Ania Denham
- 21 Destiney Toussaint
- 22 Beth Roberts
- 23 Josie Smith
- 25 Amelia Hiscox
- 26 Maddie Calder
- 27 Abbi Jenner
- 28 Beth Merrick
- 30 Charlotte Clarke
- 31 Skye Owen
- 39 Sophie Woodward



@CTWomenFC

TODAY'S MATCH OFFICIALS

Referee:

Abigail Freullet

Assistant Referees:

Feiruz Abdullahi &
Charlotte Cochrane

Fourth Official:

Lola Pollard



MATCH SPONSORS



MATCHBALL SPONSORS

