

THE

OFFICIAL MATCHDAY MAGAZINE OF CHELTENHAM TOWN WOMEN FC | ISSUE 10

ROBINESSES REVIEW



CHELTENHAM TOWN WFC V NORWICH CITY WFC
ADOBE WOMEN'S FA CUP THIRD ROUND PROPER
SUNDAY DECEMBER 8, 2024 | 2:00PM

£1.50



**MAKE
FOOTBALL
EVERYONE'S
GAME.**



**FINANCIAL
FITNESS GROUP**

Proud Partners of
Gloucestershire's Largest Women's Football Club



**CHELTEMHAM TOWN
WOMEN FC**

ANDY LIDDLE

● Cheltenham Town Women FC's Chairman shares his thoughts ahead of today's fixture



Good afternoon, and welcome along to Kayte Lane for the Third Round of the Adobe Women's FA Cup.

Welcome to the players, fans, and staff of Norwich City Women for our first ever encounter!

We're fresh off the back of three wins, including last week's League Plate win away at Stockport County Ladies, achieved after extra time, and a real shift by the players. This is a huge opportunity to proceed in this historic competition, and with another exciting fixture at home to Milton Keynes next Sunday to look forward to.

We will again be supporting the campaign for equal payments for FA Cup success between the men and women today, with a 21-second break in play immediately after kick-off, a powerful gesture commemorating the 1921 FA ban that sidelined women's football for 50 years. If you picked up a sign at the gate... hold it up high.

BBC Radio Gloucestershire featured the Club on Friday evening, a real reflection of how the Women's game is now capturing the public's attention. You can listen back via the BBC

Sounds website, Steve Kitchen Friday Night Sport at 6pm, we're on around 6:30.

We are delighted to welcome pupils from Bishops Cleeve Primary Academy this afternoon. The School's Head, Shona Swan, has been hugely supportive of Women's sport, and we hope you enjoy the game. Look out for our mascot 'Whaddney' making an appearance!

Also making an appearance will be a merry band of Cheltenham Legends, namely players from the last decade, and many of which were involved in our promotion winning season out of the Regional League 10 years ago... somehow the 2014/15 season seems like only yesterday!

Be the 12th player today, make some noise and get behind the players as we strive to make history, securing a place in the Fourth Round for the very first time.

As always, and today more than ever, thank you all for your support

**Andy, and all at
Cheltenham Town
Women FC**





Tom DAVIES

• The Robinesses Manager looks ahead to today's game...

Good afternoon, and welcome to Kayte Lane for today's Adobe FA Cup Third Round fixture against Norwich City. It's great to have you all here as we look forward to what promises to be a competitive match.

I'd like to extend a warm welcome to Andy Cook, his staff, players, and supporters, and wish them all the best for the season ahead.

We've had a fantastic couple of weeks, with two significant wins to build on. First, we battled back from behind to secure our place in today's tie with a win vs Moneyfields. Going a goal down in the second half prompted a response which kicked us into action, and we managed to turn the game around to book our place in the next round. It was a perfect example of the character this squad possesses, and a reminder of what we're capable of when we stick together.

Following that, we faced Stockport County in

the FA WNL Plate Quarter Final, and once again, we had to come from behind. It was a gritty performance, and while it wasn't the prettiest of victories, we showed the kind of determination and never-say-die attitude that will serve us well as the season progresses. To come through those challenges, particularly in knockout competitions, has been a real boost for us, and I believe it sets the tone for the challenges ahead.

The last few weeks have shown us that we have the resilience and quality to compete even when the cards are stacked against us, but it's important we continue to build on that. Today's match against Norwich is another opportunity to prove ourselves, and it's crucial we keep the momentum from our previous weeks going into these final two fixtures of the calendar year.

Let's make sure it's another great afternoon for the team and everyone involved within the club.

Enjoy the match.
Tom

Thinking about a career change in 2025 and based locally to Cheltenham/Gloucester?

Our 10-week, gym-based course starts in February. Call **07376 060314** or e-mail **courses@personaltrainingeducation.co.uk** to find out more.



ROBINESSES SHOP

ctlfc.myshopify.com



Or scan here to access the shop

**BRAND NEW!
CTWFC
BOTTLE
£14**



CTWFC Scarf
£13.50



CTWFC Mug
£6.50



CTWFC Hat
£13.50

Items usually available within 24 hours. Items available for pick up only. Items can be picked up from Bishops Cleeve FC.

UPCOMING...



MK DONS WOMEN

SUNDAY 15 DECEMBER
14:00



Or scan here to purchase your tickets

TICKETS AVAILABLE AT
TICKETTAILOR.COM/EVENTS/CHELTENHAMTOWNWOMENFC



Image provided by Marc Payne Photography

MEGAN ATTENBOROUGH INTERVIEW

Robinesses midfielder talks to Owen Mason



Cheltenham Town Women's Meg Attenborough has said that "it's always good to have a shot of making history wherever you are" as the Robinesses have the chance of reaching the Fourth

Round of the Adobe Women's FA Cup for the first time ever.

This afternoon we take on Norwich City, who currently sit seventh in the FA Women's National League Division One South-East. The Robinesses go into this crucial Third Round clash having won their last three games, a 2-0 win away at Plymouth, a 2-1 win over Moneyfields to reach this point of the FA Cup, and last week's dramatic 2-1 win against Stockport County, to reach the semi-finals of the FA WNL Plate.

Attenborough expressed how high morale was in the squad, as she said, "Everyone in the team is buzzing with the run we're on at the moment!

"We're finally getting results we deserve after a tough portion of the season."

Reaching the Fourth Round would be an incredible achievement for Tom Davies' side, as he's been at the helm of two previous Third Round appearances in 2020/21 and last season. The only other occasion Cheltenham reached this stage was 2008/09.

The midfielder stated how important it would be for the club to reach this stage, and how vital a big Kayte Lane crowd would be to getting the team over the line this afternoon.

"The FA Cup is such a big competition, the prize money is such a big help for the club to help us progress and move forwards.

"A big loud home crowd would really help us. Having that crowd boost us along the way will be very encouraging for us."

Last season whilst at MK Dons, Attenborough reached the Third Round, where they got knocked out by Women's Championship side Birmingham City.

"We managed to take them to added time, with the score being 0-0, which was a great achievement!" Attenborough recalled.

The midfielder was asked her aspirations for the rest of the season too, and getting her first Robinesses goal, which a few of her teammates have done in recent weeks, is top of the agenda.

"I would love to try and get on the scoresheet! And continue to contribute as much as possible, hopefully climbing up the table!

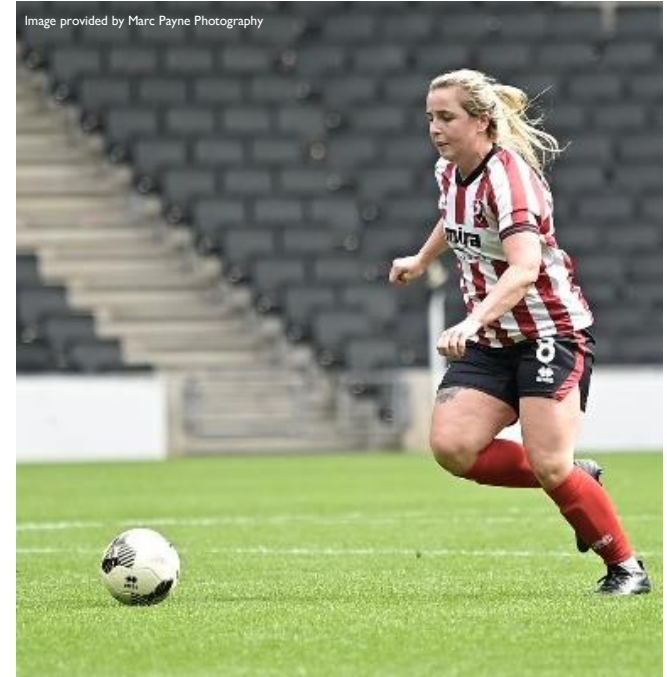


Image provided by Marc Payne Photography



Image provided by Marc Payne Photography

"Would love for our cup runs to continue and for us to win the Plate!"

Finally, with Christmas just under three weeks away, she was quizzed on her favourite part of the festive period.

"Time off work and spending time with Kelvin! ...He told me to say that!"

"The best part of Christmas dinner is Yorkshire puddings and honey roasted parsnips!" Attenborough concluded.

JOIN THE LIONESSES SUPPORTERS CLUB



Get access to exclusive competitions,
priority tickets and the latest England news.

[THEFA.COM/JOINLSC](https://www.thefa.com/joinlsc)



LIONESSES
SUPPORTERS CLUB



ROAD TO THE THIRD ROUND

The Adobe Women's FA Cup journey so far...

FIRST ROUND

**CHELTENHAM TOWN WOMEN 7
YEovil TOWN WOMEN 0
SUNDAY 3 NOVEMBER 2024
KAYTE LANE**

CHELTENHAM: Smith (Pugh-Jones 46); Finch, Owen, Wellesley-Davies; Trinci, Collis (Liggett 62), Butcher (Attenborough 62), Greenwood, Hateley (Bell 62); Pemberton, Lue (Leach 46).

YEovil: Bishop, Vernon, D. Evans (Bateman 82), Ball, Brazell (McManus 60), Wensley, Miles, Davenport (East 82), Will, Carslake, Hodge (Nicholls 19 (Spearing 70)).

Cheltenham Town Women capped off their first Adobe Women's FA Cup outing with a resounding win over Yeovil Town.

Abbey Hateley opened the scoring before a Yeovil own goal doubled the hosts' lead. Una Lue made it 3-0 before the break, and a 17-minute flurry in the second half sealed the deal, with goals from Anais Trinci, Libby Bell, Jess Leach and captain Emily Owen on her 75th appearance for the Club.

The home side dominated the opening exchanges before a bad injury to Yeovil's Jess Hodge saw the game halted for ten minutes.

Trinci and Lue then combined to try and open the scoring but were thwarted by a last-ditch tackle, before Hateley got her first goal for the Club after a pinpoint pass from Owen to find her in space.

Hateley quickly helped double the lead when her cross deflected off Yeovil defender Emma Brazell and past goalkeeper Hannah Bishop.

After having an effort disallowed for offside



moments earlier, Lue pounced on a loose pass back to Bishop, to score her sixth of the season and give Cheltenham a commanding 3-0 lead at the interval.

After an even start after the break, Doris Greenwood had the first big chance of the Second Half, as she cannoned her shot off the post.

Trinci also acquired her first Cheltenham goal, 20 minutes from time. A cross from Libby Bell almost found Jess Leach in the area but Trinci was on hand to slam a shot past Bishop.

Leach would come close again shortly after, as she controlled the ball fantastically but was denied by the woodwork. Bell then managed to snag Cheltenham's fifth. After Lacy-Jai Liggett's shot was stopped by Bishop, Bell picked up the loose ball on the edge of the box and curled her effort into the top corner.

With five minutes to go, scorer turned provider as Bell found Leach in the area, who slotted home from close range.

Robinesses skipper Owen rounded off the show, as her deflected shot beat Bishop and made it Seventh Heaven for Cheltenham.

SECOND ROUND CHELTENHAM TOWN WOMEN 2 MONEYFIELDS WOMEN 1 SUNDAY 24 NOVEMBER KAYTE LANE

CHELTENHAM: Smith; Finch, Owen, Llewellyn; Trinci (Bell 65), Collis, Attenborough, Butcher, Hateley (Wellesley-Davies 60); Pemberton (Greenwood 65), Lue

MONEYFIELDS: Luce, Moody, Howden (Garcia 72), Granger, Butterworth, Albuery, Tonks, Wood, Fox (Fuller 46), Jeal (Hill 88), Wilson-Wilton

Next up for The Robinesses was FA Women's National League Division One South-West side Moneyfields.

The game started with a close contest, as both sides were forced to adjust to the horrendous elements with rain and strong winds making passing and controlling the ball challenging.

With the wind at their backs, Moneyfields peppered the Cheltenham box with crosses early, with Smith on hand to deal with them under pressure.

Cheltenham would rely on direct play, with Ella Pemberton, Henna Butcher and Una Lue combining well to cause Moneyfield issues.

Despite numerous chances for either side, the teams went in even at the break, having battled

the conditions as much as they had each other,

Moneyfields manager Karl Watson made a tactical change at half time with Kim Fuller replacing Megan Fox, and the change made an immediate difference.

Just five minutes into the Second Half, the newly introduced Fuller floated a cross for Charley Wilson-Wilton to power a header at goal, with Mia Smith able to get a hand to it.

Unfortunately for the Cheltenham 'keeper, the ball rebounded back off the crossbar allowing the Moneys' striker to nod home.

With Cheltenham pushing the issue and taking the game to the visitors, Lue would pull away from her marker, before linking well with Butcher who was fouled on the edge of the box. winning a free-kick. Ffion Llewellyn stepped up and curled the ball around the wall, beating Luce at her left-hand post.

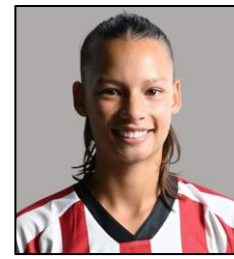
With three minutes left, in a moment that Luce would rather forget, a flicked header from Lue was spilt directly in front of the on-rushing Butcher, who rounded the Moneys 'keeper, controlled the loose ball, and squared it to Lue to tap home from almost point-blank range.

Moneyfields refused to stay down, however, with Fuller asking questions. A drilled shot right at the death forced Smith into another superb stop, low to her left, to ensure Cheltenham advanced to the Third Round.





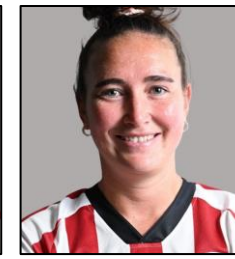
**CHELTEMPHAM TOWN
WOMEN FC
SQUAD 2024/25**



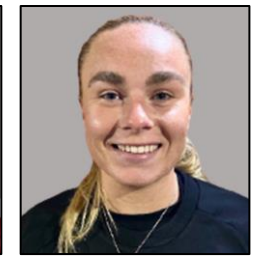
UNA LUE
Sponsored By:
270 CLIMBING



**KAITLYN
MORGAN-HEMMENS**



EMILY OWEN



ELLA PEMBERTON



MEG ATTENBOROUGH



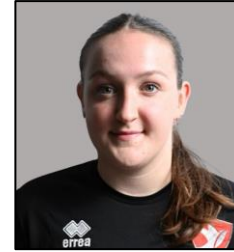
LIBBY BELL
Sponsored By:
MORGAN & CARTER
POWELL



HENNA BUTCHER



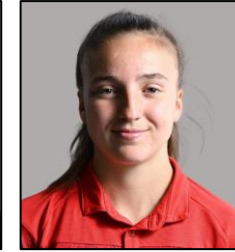
MAISY COLLIS



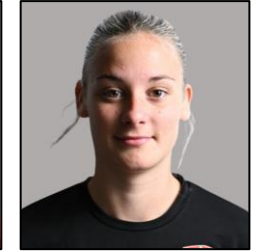
CARYS PUGH-JONES



MIA SMITH



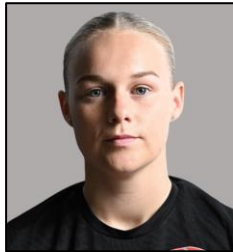
ANAIS TRINCI



LILLY WELLESLEY-DAVIES
Sponsored By:
BLADES BIKES



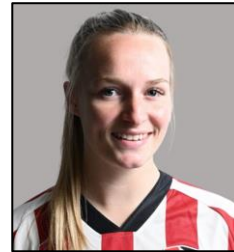
BROOKE ELLIS



HOLLY FINCH



DORIS GREENWOOD
Sponsored By:
ADNET PRECISION
ENGINEERING LTD



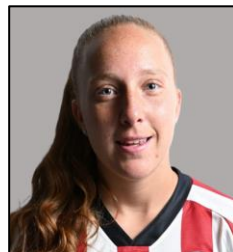
ESME HARRIS



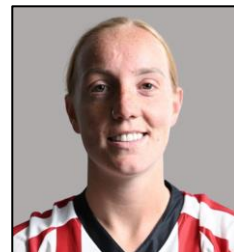
ABBEY HATELEY



JESSICA LEACH



LACY-JAI LIGGETT



FFION LLEWELLYN
Sponsored By:
SPLASH OUT
BATHROOMS

**Contact
commercial@ctwomenfc.com
to sponsor your favourite
player today!**





MARC PAYNE

PHOTOGRAPHY

I AM AN EXPERIENCED PHOTOGRAPHER BASED IN STROUD WITH OVER 5 YEARS EXPERIENCE CAPTURING A WIDE VARIETY OF PHOTOGRAPHY WITH A DIPLOMA IN PHOTOGRAPHY



PORTRAITS, WEDDINGS & SPORTS

07300562066

[HTTPS://LINKTR.EE/MARCPAYNEPHOTOGRAPHER](https://linktr.ee/marcpaynephotographer)



FIXTURES AND RESULTS

2024/25 Competitive Fixtures



DATE	OPPOSITION	COMP.	ATT.	POM
AUG				
SUN 18	H PLYMOUTH ARGYLE WOMEN	FAWNLSP	4-0	LIGGETT
Sun 25	A MK Dons Women	FAWNLSP	5-0	Attenborough
Thur 29	A Worcester City Women	WNLC DR	0-1	Owen
SEPT				
SUN 1	H AFC WIMBLEDON WOMEN	FAWNLSP	0-3	LUE
Sun 8	A Billericay Town Women	FAWNLSP	1-2	Attenborough
SUN 15	H HASHTAG UNITED WOMEN	FAWNLSP	1-1	BUTCHER
Sun 22	A Watford FC Women	FAWNLSP	0-2	Llewellyn
THUR 26	H GWALIA UNITED	FAWNLSP	2-2	LIGGETT
Sun 29	A Boldmere St. Michaels Women	WNLP R1	4-1	Owen
OCT				
Sun 6	A Oxford United Women	FAWNLSP	0-3	Butcher
SUN 13	H EXETER CITY WOMEN	FAWNLSP	0-3	LLEWELLYN
SUN 20	H WOLVERHAMPTON WANDERERS	WNLP R2	2-1	OWEN
Sun 27	A Lewes FC Women	FAWNLSP	0-3	Lue
NOV				
SUN 3	H YEOVIL TOWN WOMEN	AWFAC R1	7-0	TRINCI
SUN 10	H IPSWICH TOWN WOMEN	FAWNLSP	0-7	BUTCHER
Sun 17	A Plymouth Argyle Women	FAWNLSP	2-0	Llewellyn
SUN 24	H MONEYFIELDS WOMEN	AWFAC R2	2-1	SMITH
DEC				
Sun 1	A Stockport County Ladies	WNLP QF	2-1 ^{act}	Wellesley-Davies
SUN 8	H NORWICH CITY	AWFAC R3	14:00	
SUN 15	H MK DONS WOMEN	FAWNLSP	14:00	
JAN				
Sun 5	A AFC Wimbledon Women	FAWNLSP	14:00	
SUN 12	H BILLERICAY TOWN WOMEN	FAWNLSP	14:00	
Sun 19	A Bristol Rovers Women	GFA SWC	14:00	
FEB				
SUN 2	H OXFORD UNITED WOMEN	FAWNLSP	14:00	
Wed 12	A Gwalia United	FAWNLSP	19:45	
SUN 16	H PUCKLECHURCH WOMEN	GFA SWC	14:00	
SUN 23	H WATFORD FC WOMEN	FAWNLSP	14:00	
MAR				
Sun 9	A Hashtag United Women	FAWNLSP	14:00	
Sun 23	A Exeter City Women	FAWNLSP	14:00	
APR				
SUN 13	H LEWES FC WOMEN	FAWNLSP	14:00	
Sun 27	A Ipswich Town Women	FAWNLSP	14:00	

Fixture details subject to change.

POM: Player of the Match (as chosen by poll, match sponsor, or opposition where applicable).

FAWNLSP: FA Women's National League Southern Premier

AWFAC: Adobe Women's FA Cup

WNLC / WNLP: FA Women's National League Cup/ Plate

GFA SWC: Gloucestershire FA Senior Women's Cup



TODAY'S TEAMS

CHELTENHAM TOWN WFC

- 01 Mia Smith
- 02 Anais Trinci
- 03 Abbey Hateley
- 04 Holly Finch
- 06 Maisy Collis
- 07 Lacy-Jai Liggett
- 08 Megan Attenborough
- 10 Libby Bell
- 11 Esme Harris
- 12 Henna Butcher
- 13 Ffion Llewellyn
- 14 Lilly Wellesley-Davies
- 15 Emily Owen (c)
- 16 Ella Pemberton
- 17 Doris Greenwood
- 18 Brooke Ellis
- 19 Jessica Leach
- 21 Una Lue
- 22 Kaitlyn Morgan-Hemmens
- 30 Carys Pugh-Jones

NORWICH CITY WFC

- Sarah Quantrill
- Chardonnay Johnston
- Ceri Flye
- Eloise Morran
- Megan Todd (c)
- Millie Daviss
- Ellie Smith
- Natasha Snelling
- Tamsin Medd-Gill
- Ella Powell
- Katie Knights
- Lara Densley
- Freya Symonds
- Lauren Hailes
- Issy Moore
- Lauren Tomlinson
- Shannon Shaw
- Olivia Cook
- Jess Barnes
- Hope Strauss
- Sienna Booty
- Ellie Bishop
- Holly Kennard
- Amber Locker



@CTWomenFC

TODAY'S MATCH OFFICIALS

Referee:

Sam Anderson

Assistant Referees:

Keith Simpson &
Ella Squires