

THE

OFFICIAL MATCHDAY MAGAZINE OF CHELTENHAM TOWN WOMEN FC | ISSUE 09

ROBINESSES REVIEW



CHELTENHAM TOWN WFC V MONEYFIELDS WFC
ADOBE WOMEN'S FA CUP SECOND ROUND PROPER
SUNDAY NOVEMBER 24, 2024 | 2:00PM

£1.50





**FINANCIAL
FITNESS GROUP**

Proud Partners of
Gloucestershire's Largest Women's Football Club



**CHELTEMHAM TOWN
WOMEN FC**

ANDY LIDDLE

● Cheltenham Town Women FC's Chairman shares his thoughts ahead of today's fixture



Good Afternoon and welcome to the Second Round of the Adobe Women's FA Cup.

I'd like to welcome the players, staff and fans from Portsmouth-based, Tier Four, Moneyfields Women FC, for the first meeting between the two sides.

Moneyfields made the Fourth Round last season, one further than we have been to date. They are enjoying a good season, having lost only twice in the league, and are fresh off the back of a 4-4 draw away to then top of the table Swindon Town last weekend.

Of course, we enjoyed a cracking result last weekend too. The critical 2-0 away win over Plymouth, which puts a few points between the two Clubs in the league, and sets us up nicely for the end of year run in.

You'll witness a first today: a 21 second pause in the game, immediately after kick-off. We're joining Lewes FC and others in the **Equal FA Cup** campaign, which is calling for equal prize money for the men's and women's FA Cup

competitions. This is not a request for a handout – it's about recognizing that prize money is earned through performance, dedication, and investment in the game. Women's teams should be able to earn the same revenue for their footballing achievements.

Equalizing prize money would be a key step in building more financially sustainable football ecosystems that benefit clubs, players, and communities across the country. Currently, men win multiples more compared to women for each comparable round.

Enjoy the game

Andy Liddle,
Chairman



**#Equal
FACup**



Tom **DAVIES**

● The Robynesses Manager looks ahead to today's game...

Good afternoon, and welcome to today's game. We're excited to be back at home, in Adobe Women's FA Cup action against today's opponents Moneyfields.

I'd like to extend a warm welcome to Karl and their staff, players, and supporters for what should be another great game.

Looking back at our recent 2-0 win against Plymouth Argyle, I couldn't be more proud of the way the team came together. It was a fantastic result, but what stood out most was the spirit, work rate, and unity we showed on and off the pitch. Each player contributed to the victory, and it was that collective effort that got us over the line. We've had some really honest conversations recently, both in how we need to improve things, but also sharing and connecting as people outside of football, which is clear to

see within the performance and the celebrations afterwards.

While results like this are important, we must remain focused and ensure that we're picking up results on a more consistent basis in the league to allow us to progress back up the table.

Today provides a respite from league action, but the expectations on the performance and the desire to achieve the result are the same with the prestigious nature of the FA Cup, while the importance the prize money has to the running of the club is evident.

**Enjoy the match,
Tom**



**ROBYNESSES
SHOP**

ctlfc.myshopify.com



CTWFC Mug
£6.50



CTWFC Hat
£13.50



CTWFC Scarf
£13.50

Scan here to access
the shop



Items usually available within 24 hours. Items available for pick up only. Items can be picked up from Bishop's Cleeve FC.



Image provided by Marc Payne Photography

ABBEY HATELEY INTERVIEW

Robinsons defender talks to Owen Mason



Cheltenham Town Women left back, Abbey Hateley, has stated that this afternoon's Adobe Women's FA Cup Second Round tie with Moneyfields is "an important game for the team and club as a whole"

as we look to reach the Third Round for the fourth time in our history.

Hateley opened her Robinsons account in our 7-0 win over Yeovil Town in the First Round. She also didn't underestimate this afternoon's opposition, who currently sit third in the Women's National League South-West, five points off league leaders AFC Bournemouth.

"It's a big opportunity for us, and after last week's win, we're excited to show what we can do, especially given we're back at home.

"We know it's going to be a competitive game, so we need to make sure we focus and prepare properly."

The 22-year-old was part of the squad who beat Plymouth Argyle 2-0 last weekend in Saltash. It was the Robinsons' first league win since August, and Hateley emphasised how much it meant to the players and the coaching staff.

"We've really stuck together over the past couple of months, so to finally get a reward for all of our hard work feels amazing. The vibes were top tier, it's safe to say it's

good we all stuck to football and not singing!

"I love this team and what it's about, so my aspiration is to keep giving 100%, and hopefully come away with a secured place in the League, but to make history too for the club in the FA Cup and the [FA WNL] Plate."

Hateley was also quizzed on her favourite FA Cup memory, and it came as recently as last May.

"Watching Man United beat Man City 2-1 this year is definitely my favourite! Viva Garnacho!"

After the visit of Moneyfields to Kayte Lane, The Robinsons make the trip up north to Stockport in the FA WNL Plate Quarter Finals on Sunday December 1.

"The next couple of weeks is crucial with two big competitions. It's an opportunity to keep the momentum flowing.

"Travelling to Stockport is another chance to work on our principles, and hopefully walk away with another performance we are proud of!" Hateley said.

Finally, with Christmas less than five weeks away, the former Loughborough defender was asked her



Image provided by @Zider_Red on X (formerly Twitter)



Image provided by George Marriot Photography

favourite things about the holiday season.

"Spending quality time with family, going to Christmas markets, and obviously eating

all the good food that comes with it!

"Yorkshire puddings *do* belong on the plate!" Hateley concluded.

JOIN THE LIONESSES SUPPORTERS CLUB



Get access to exclusive competitions,
priority tickets and the latest England news.

[THEFA.COM/JOINLSC](https://www.thefa.com/joinlsc)



LIONESSES
SUPPORTERS CLUB



FIRST ROUND ACTION

Sunday 3 November 2024 | 14:00 | Adobe Women's FA Cup First Round Proper



CHELTENHAM TOWN WFC 7 - 0 YEOVIL TOWN WFC



Smith (Pugh-Jones 46); Finch, Owen, Wellesley-Davies; Trinci, Collis (Liggett 62), Butcher (Attenborough 62), Greenwood, Hateley (Bell 62); Pemberton, Lue (Leach 46)



Bishop, Vernon, D. Evans (Bateman 82), Ball, Brazell (McManus 60), Wwensley, Miles, Davenport (East 82), Will, Carslake, Hodge (Nicholls 19 (Spearing 70))

Cheltenham Town Women sealed their place in the Second Round of the Adobe Women's FA Cup with a resounding win over Yeovil Town.

Abbey Hateley opened the scoring after a fantastic pass from captain Emily Owen. An own goal two minutes later doubled the Robinesses' lead.

Una Lue made it 3-0 before the break, and a 17-minute flurry late in the Second Half, which saw goals for Anais Trinci, Libby Bell, Jess Leach and a goal for Owen on her 75th appearance for the club.

The Robinesses dominated the early going, however the game was halted for almost ten minutes after a bad injury. Yeovil striker Jess Hodge was taken off on a stretcher after landing awkwardly going for the ball.

Cheltenham then tried to open the scoring as Anais Trinci found Una Lue with a lovely cross, however the

opportunity was thwarted before the ball could reach her. Moments later Abbey Hateley opened the scoring after a pinpoint pass from Owen to find her in the box. It was her first goal for the club since joining from Loughborough Lightning in the summer.

It was quickly 2-0 after Hateley's great pass ricocheted off Glovers defender Emma Brazell, and past keeper Hannah Bishop. Tom Davies' side threatened to run riot in the First Half, as Trinci and Henna Butcher tested Bishop before the break.

After having an effort disallowed for offside moments earlier, Lue pounced on a loose pass back to Bishop to give Cheltenham a commanding 3-0 lead at the interval. It was Lue's sixth goal of the season, as she continued her rich vein of form.

After quite an even spell in the Second Half, Doris Greenwood had the first big chance of the

half, as she cannoned her shot off the post.

Trinci also acquired her first goal for the club 20 minutes from time. A great cross in from Libby Bell almost found Jess Leach in the area, however, Trinci was on hand to slam her shot past Bishop.

Leach came close to making it 5-0, after controlling the ball fantastically, however her effort smashed off the crossbar. Bell then did get the Robinesses' fifth, after Lacy-Jai Liggett's shot was saved well by Bishop. Bell found the ball on the edge of the area and curled it into the top corner.

Goalscorer turned provider in the 85th minute as Bell found Leach in the area, who's close range effort went past Bishop.

Robinesses skipper Emily Owen rounded things off, putting the icing on the cake for her 75th appearance for the Club, as her deflected effort made it Seventh Heaven for Cheltenham.

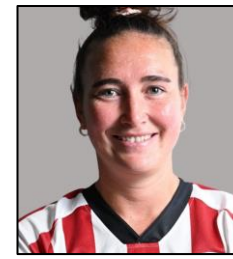




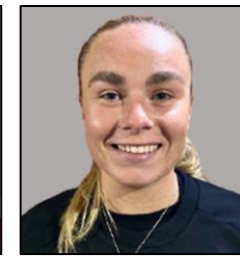
CHELTENHAM TOWN WOMEN FC SQUAD 2024/25



**KAITLYN
MORGAN-HEMMENS**



EMILY OWEN



ELLA PEMBERTON



CARYS PUGH-JONES



MEG ATTENBOROUGH



LIBBY BELL

Sponsored By:
MORGAN & CARTER
POWELL



HENNA BUTCHER



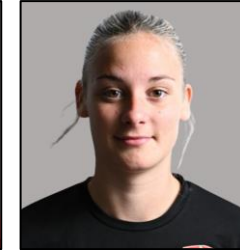
MAISY COLLIS



MIA SMITH



ANAIS TRINCI



LILLY WELLESLEY-DAVIES

Sponsored By:
BLADES BIKES



HOLLY FINCH



DORIS GREENWOOD



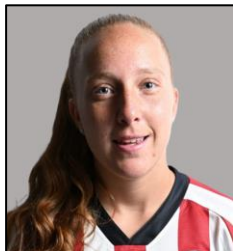
ESME HARRIS



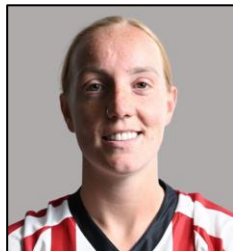
ABBAY HATELEY



JESSICA LEACH

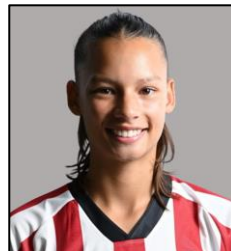


LACY-JAI LIGGETT



FFION LLEWELLYN

Sponsored By:
SPLASH OUT
BATHROOMS



UNA LUE

Sponsored By:
270 CLIMBING

**Contact
commercial@ctwomenfc.com
to sponsor your favourite
player today!**





MARC PAYNE

PHOTOGRAPHY

I AM AN EXPERIENCED PHOTOGRAPHER BASED IN STROUD WITH OVER 5 YEARS EXPERIENCE CAPTURING A WIDE VARIETY OF PHOTOGRAPHY WITH A DIPLOMA IN PHOTOGRAPHY



PORTRAITS, WEDDINGS & SPORTS

07300562066

[HTTPS://LINKTR.EE/MARCPAYNEPHOTOGRAPHER](https://linktr.ee/marcpaynephotographer)



FIXTURES AND RESULTS

2024/25 Competitive Fixtures



DATE	OPPOSITION	COMP.	ATT.	POM	
AUG					
SUN 18	H PLYMOUTH ARGYLE WOMEN	FAWNLSP	4-0	131	LIGGETT
Sun 25	A MK Dons Women	FAWNLSP	5-0	100	Attenborough
Thur 29	A Worcester City Women	WNLC DR	0-1	181	Owen
SEPT					
SUN 1	H AFC WIMBLEDON WOMEN	FAWNLSP	0-3	137	LUE
Sun 8	A Billericay Town Women	FAWNLSP	1-2	183	Attenborough
SUN 15	H HASHTAG UNITED WOMEN	FAWNLSP	1-1	110	BUTCHER
Sun 22	A Watford FC Women	FAWNLSP	0-2	116	Llewellyn
THUR 26	H GWALIA UNITED	FAWNLSP	2-2	113	LIGGETT
Sun 29	A Boldmere St. Michaels Women	WNLP R1	4-1	122	Owen
OCT					
Sun 6	A Oxford United Women	FAWNLSP	0-3	168	Butcher
SUN 13	H EXETER CITY WOMEN	FAWNLSP	0-3	117	LLEWELLYN
SUN 20	H WOLVERHAMPTON WANDERERS	WNLP R2	2-1	153	OWEN
Sun 27	A Lewes FC Women	FAWNLSP	0-3	591	Lue
NOV					
SUN 3	H YEOVIL TOWN WOMEN	AWFAC R1	7-0	103	TRINCI
SUN 10	H IPSWICH TOWN WOMEN	FAWNLSP	0-7	203	BUTCHER
Sun 17	A Plymouth Argyle Women	FAWNLSP	2-0	173	Llewellyn
SUN 24	H MONEYFIELDS WOMEN	AWFAC R2	14:00		
DEC					
Sun 1	A Stockport County Ladies	WNLP QF	14:00		
SUN 15	H MK DONS WOMEN	FAWNLSP	14:00		
JAN					
Sun 5	A AFC Wimbledon Women	FAWNLSP	14:00		
SUN 12	H BILLERICAY TOWN WOMEN	FAWNLSP	14:00		
Sun 19	A Bristol Rovers Women	GFA SWC	14:00		
FEB					
SUN 2	H OXFORD UNITED WOMEN	FAWNLSP	14:00		
Wed 12	A Gwalia United	FAWNLSP	19:45		
SUN 16	H PUCKLECHURCH WOMEN	GFA SWC	14:00		
SUN 23	H WATFORD FC WOMEN	FAWNLSP	14:00		
MAR					
Sun 9	A Hashtag United Women	FAWNLSP	14:00		
Sun 23	A Exeter City Women	FAWNLSP	14:00		
APR					
SUN 13	H LEWES FC WOMEN	FAWNLSP	14:00		
Sun 27	A Ipswich Town Women	FAWNLSP	14:00		

Fixture details subject to change.

POM: Player of the Match (as chosen by poll, match sponsor, or opposition where applicable).

FAWNLSP: FA Women's National League Southern Premier

AWFAC: Adobe Women's FA Cup

WNLC / WNLP: FA Women's National League Cup/ Plate

GFA SWC: Gloucestershire FA Senior Women's Cup



TODAY'S TEAMS

CHELTHENHAM TOWN WFC

- 01 Mia Smith
- 02 Anais Trinci
- 03 Abbey Hateley
- 04 Holly Finch
- 06 Maisy Collis
- 07 Lacy-Jai Liggett
- 08 Megan Attenborough
- 10 Libby Bell
- 11 Esme Harris
- 12 Henna Butcher
- 13 Ffion Llewellyn
- 14 Wellesley-Davies
- 15 Emily Owen (c)
- 16 Ella Pemberton
- 17 Doris Greenwood
- 19 Jessica Leach
- 21 Una Lue
- 22 Kaitlyn Morgan-Hemmens
- 30 Carys Pugh-Jones

MONEYFIELDS WFC

- Sara Luce
- Lucy Mear
- Skye Grainger
- Emma Moody
- Libby Doyle
- Beth Burgess
- Britt Jeal
- Maisie Aldridge
- Megan Wood
- Charley Wilson-Wilton
- Kimberley Fuller
- Sarah Butterworth
- Shannon Albuery
- Megan Fox
- Sophie Phelps
- Gemma Simmonds
- Bekah Tonks



@CTWomenFC

TODAY'S MATCH OFFICIALS

Referee:

Sam Anderson

Assistant Referees:

Ryan Jennings &

Nathan Brown