

THE

OFFICIAL MATCHDAY MAGAZINE OF CHELTENHAM TOWN WOMEN FC | ISSUE 08

ROBINESSES REVIEW



**Congratulations on
100 Games
In Management!**



CHELTENHAM TOWN WFC V IPSWICH TOWN WFC
FA WOMEN'S NATIONAL LEAGUE SOUTHERN PREMIER
SUNDAY NOVEMBER 10, 2024 | 2:00PM

£1.50



MAKE FOOTBALL EVERYONE'S GAME.



**FINANCIAL
FITNESS GROUP**

Proud Partners of
Gloucestershire's Largest Women's Football Club



**CHELTENHAM TOWN
WOMEN FC**

ANDY LIDDLE

• Cheltenham Town Women FC's Chairman shares his thoughts ahead of today's fixture



Good afternoon and welcome to Kayte Lane for this afternoon's fixture with high flying Ipswich Town Women who are currently unbeaten in the FA Women's National League Southern Premier Division.

Incredibly, Ipswich have scored 25 without reply across their last 2 games (league and Adobe Women's FA Cup)!

Ipswich finished fourth last season, and only missed out on promotion the season before on goal difference having finished third the season before that, in other words they are an established Tier Three side and have been knocking on the promotion door for some time now.

It was great to pass a couple of significant milestones last week. First of all, my granddaughter attended a Women's football match and enjoyed a winning start! Secondly, we recognised Tom passing 100 games in charge with a well-earned award. The Club has been transformed since Tom joined forces



with previous manager Alex Cheal, before taking the reign, winning the FA WNL Division One South West and establishing us in Tier Three.

Yeovil were given the respect they deserved last weekend after knocking Tier Four side Southampton out of the Women's FA Cup in the Third Qualifying Round. But for some cracking saves from their keeper, the score would have reached double figures as we dominated throughout. We welcome Moneyfields from Hampshire in Round Two on November 24 in a huge game for the Club, and are relying on your support to carry us through to the Third Round. We've never made the Fourth Round... but some of us are dreaming already!

Finally, our previous Chair, Alexis Lunn-Gadd (you have to go as far back as 2012), brings her youngsters from Leonard Stanley Lionesses along this afternoon as mascots and we hope you enjoy the game. Lex is also a former first team goalkeeper, although not so secretly she preferred a run out up front. Still hugely involved with the game, Lex is a previous Women and Girls development officer, initially for Herefordshire and then Gloucestershire, and is currently the Operations Manager for the FAs Women's Talent pathway, and we're delighted to have her back today... I think she'll notice some significant changes!

Enjoy the game

Andy Liddle,
Chairman





Tom DAVIES

• The Robinesses Manager looks ahead to today's game...

Good afternoon and welcome back to Kayte Lane for today's FA WNL Southern Premier Division tie vs Ipswich Town.

Firstly, I want to extend a warm welcome to our opponents, Ipswich Town, and to their manager Joe Sheehan, their staff, players, and supporters. Matches between our sides have been a mixed bag with heavy defeats on the road but a valiant 2-2 draw here last time around, coupled with a competitive draw against Hashtag United and a win vs Wolves Women it further highlights the potential of this group when it comes together.

We come into this fixture off the back of inconsistent results but encouraging performances. Our away game against Lewes FC didn't go our way, albeit with a dominating performance with the ball and within transitions, we couldn't find the final pass or connection to get us on the scoresheet and ultimately saw us punished by the opposition.

However, our recent 7-0 victory over Yeovil in the FA Cup was a pleasing result and more importantly see's us through to the next round while it was also key for us to put into game situations what we've been working on during training sessions following our lack of chances created and goals scored.

Most recently, our 2-1 win against Wolves Women in the League Plate was another testament to our resilience and determination. It was a gritty performance that saw us dig deep to secure a place in the Quarterfinals.

Whilst we don't look too far ahead, within the struggles that this season has provided, the next 6 to 7 weeks are pivotal for our season. With the Adobe Women's FA Cup Second Round approaching, and hopefully a Third Round to follow that; three league games against Ipswich, Plymouth and MK Dons (with two at home); and a Plate Semi-final slot at stake, we know that now is the time to connect the dots and apply these performances into key results which help shape the direction we want to be moving in.

Thank you all again for your ongoing support, long may that continue, and enjoy today's game.

Tom

UPCOMING...



MONEYFIELDS WOMEN

SUNDAY 24 NOVEMBER
14:00



MK DONS WOMEN

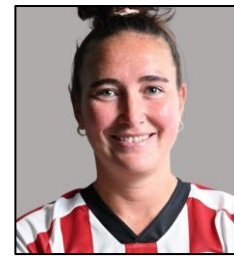
SUNDAY 15 DECEMBER
14:00



TICKETS AVAILABLE AT
[TICKETTAILOR.COM/EVENTS/CHELTHENHMTOWNWOMENFC](https://www.tickettailor.com/events/cheltenhamtownwomenfc)



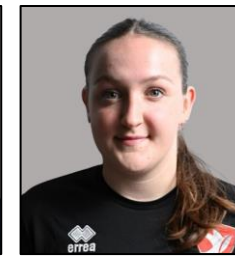
**CHELTENHAM TOWN
WOMEN FC
SQUAD 2024/25**



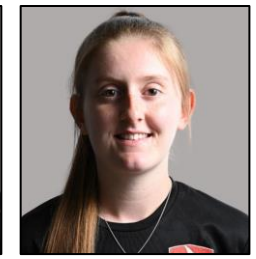
EMILY OWEN



ELLA PEMBERTON



CARYS PUGH-JONES



MIA SMITH



MEG ATTENBOROUGH



LIBBY BELL

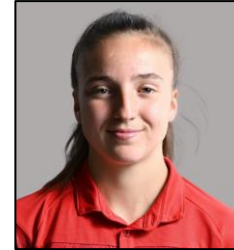
Sponsored By:
MORGAN & CARTER
POWELL



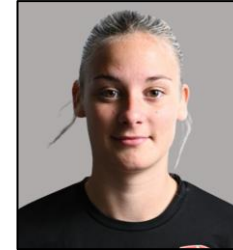
HENNA BUTCHER



MAISY COLLIS



ANAIS TRINCI



LILLY WELLESLEY-DAVIES

Sponsored By:
BLADES BIKES



HOLLY FINCH



DORIS GREENWOOD



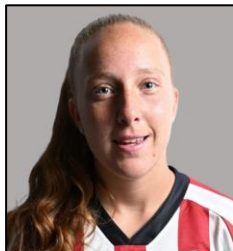
ESME HARRIS



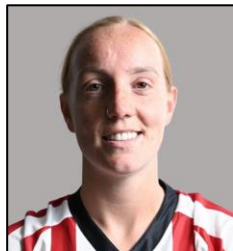
ABBAY HATELEY



JESSICA LEACH

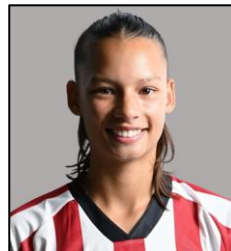


LACY-JAI LIGGETT



FFION LLEWELLYN

Sponsored By:
SPLASH OUT
BATHROOMS



UNA LUE

Sponsored By:
270 CLIMBING

**Contact
commercial@ctwomenfc.com
to sponsor your favourite
player today!**



RESERVE TEAM

FA Women's National League Reserves Division South-West



DATE		OPPOSITION	COMP		POM
Sept 1	A	Moneyfields Reserves	FAWNL RC1	5-11	Norman
Sept 8	A	Swindon Town Dev.	FAWNL RD	0-3	Norman
OCT 6	H	PORTSMOUTH DEV.	FA WNL RD	0-3	NORMAN
Oct 13	A	Moneyfields Reserves	FAWNL RD	3-7	Hale
OCT 27	H	MAIDENHEAD UNITED DEV.	FAWNL RP	3-4	DOWLING
Nov 3	A	AFC Bournemouth Dev.	FAWNL RD	0-12	Hale
NOV 10	H	EXETER CITY DEV.	FA WNL RD		
Nov 17	A	Cheltenham Civil Service	GFA WT2		
NOV 24	H	SWINDON TOWN DEV.	FA WNL RD		
Dec 1	A	Keynsham Town Dev.	FAWNL RD		
DEC 8	H	AFC BOURNEMOUTH DEV.	FA WNL RD		
Dec 15	A	Exeter City Dev.	FAWNL RD		
JAN 5	H	MONEYFIELDS RESERVES	FA WNL RD		
Jan 12	A	Portsmouth Dev.	FAWNL RD		
TBA	H	KEYNSHAM TOWN DEV.	FA WNL RD		

FA WNL RD: FA WNL Reserves Division.
 FAWNL RC: FA WNL Reserves Cup.
 FAWNL RP: FA WNL Reserves Plate
 GFAWT: GFA Women's Trophy.

POM: Player of the Match (Chosen by opposition).



ROBINNESSES SHOP

ctlfc.myshopify.com



CTWFC Mug
£6.50



CTWFC Hat
£13.50



CTWFC Scarf
£13.50

Scan here to access
the shop



Items usually available within 24 hours. Items available for pick up only. Items can be picked up from Bishop's Cleeve FC.



MARC PAYNE

PHOTOGRAPHY

I AM AN EXPERIENCED PHOTOGRAPHER BASED IN STROUD WITH OVER 5 YEARS EXPERIENCE CAPTURING A WIDE VARIETY OF PHOTOGRAPHY WITH A DIPLOMA IN PHOTOGRAPHY



PORTRAITS, WEDDINGS & SPORTS

07300562066

[HTTPS://LINKTR.EE/MARCPAYNEPHOTOGRAPHER](https://linktr.ee/marcpaynephotographer)



FIXTURES AND RESULTS

2024/25 Competitive Fixtures



DATE	OPPOSITION	COMP.	ATT.	POM	
AUG					
SUN 18	H PLYMOUTH ARGYLE WOMEN	FAWNLSP	4-0	131	LIGGETT
Sun 25	A MK Dons Women	FAWNLSP	5-0	100	Attenborough
Thur 29	A Worcester City Women	WNLC DR	0-1	181	Owen
SEPT					
SUN 1	H AFC WIMBLEDON WOMEN	FAWNLSP	0-3	137	LUE
Sun 8	A Billericay Town Women	FAWNLSP	1-2	183	Attenborough
SUN 15	H HASHTAG UNITED WOMEN	FAWNLSP	1-1	110	BUTCHER
Sun 22	A Watford FC Women	FAWNLSP	0-2	116	Llewellyn
THUR 26	H GWALIA UNITED	FAWNLSP	2-2	113	LIGGETT
Sun 29	A Boldmere St. Michaels Women	WNLP R1	4-1	122	Owen
OCT					
Sun 6	A Oxford United Women	FAWNLSP	0-3	168	Butcher
SUN 13	H EXETER CITY WOMEN	FAWNLSP	0-3	117	LLEWELLYN
SUN 20	H WOLVERHAMPTON WANDERERS	WNLP R2	2-1	153	OWEN
Sun 27	A Lewes FC Women	FAWNLSP	0-3	591	Lue
NOV					
SUN 3	H YEOVIL TOWN WOMEN	AWFAC R1	7-0	103	TRINCI
SUN 10	H IPSWICH TOWN WOMEN	FAWNLSP	14:00		
Sun 17	A Plymouth Argyle Women	FAWNLSP	14:00		
SUN 24	H MONEYFIELDS WOMEN	AWFAC R2	14:00		
DEC					
Sun 1	A Stockport County Ladies	WNLP QF	14:00		
SUN 15	H MK DONS WOMEN	FAWNLSP	14:00		
JAN					
Sun 5	A AFC Wimbledon Women	FAWNLSP	14:00		
SUN 12	H BILLERICAY TOWN WOMEN	FAWNLSP	14:00		
Sun 19	A Bristol Rovers Women	GFA SWC	14:00		
FEB					
SUN 2	H OXFORD UNITED WOMEN	FAWNLSP	14:00		
Wed 12	A Gwalia United	FAWNLSP	19:45		
SUN 16	H PUCKLECHURCH WOMEN	GFA SWC	14:00		
SUN 23	H WATFORD FC WOMEN	FAWNLSP	14:00		
MAR					
Sun 9	A Hashtag United Women	FAWNLSP	14:00		
Sun 23	A Exeter City Women	FAWNLSP	14:00		
APR					
SUN 13	H LEWES FC WOMEN	FAWNLSP	14:00		
Sun 27	A Ipswich Town Women	FAWNLSP	14:00		

Fixture details subject to change.

POM: Player of the Match (as chosen by poll, match sponsor, or opposition where applicable).

FAWNLSP: FA Women's National League Southern Premier

AWFAC: Adobe Women's FA Cup

WNLC / WNLP: FA Women's National League Cup/ Plate

GFA SWC: Gloucestershire FA Senior Women's Cup



TODAY'S TEAMS

CHELTENHAM TOWN WFC

- 01 Mia Smith
- 02 Anais Trinci
- 03 Abbey Hateley
- 04 Holly Finch
- 06 Maisy Collis
- 07 Lacy-Jai Liggett
- 08 Megan Attenborough
- 10 Libby Bell
- 11 Esme Harris
- 12 Henna Butcher
- 13 Ffion Llewellyn
- 14 Wellesley-Davies
- 15 Emily Owen (c)
- 16 Ella Pemberton
- 17 Doris Greenwood
- 19 Jessica Leach
- 21 Una Lue
- 30 Carys Pugh-Jones

IPSWICH TOWN WFC

- 01 Natalia Negri
- 02 Maria Boswell
- 03 Summer Hughes
- 04 Charlotte Fleming
- 05 Grace Garrad
- 06 Leah Mitchell
- 07 Natasha Thomas
- 08 Kyra Robertson
- 09 Isabella Fisher
- 10 Eloise King
- 11 Lucy O'Brien
- 12 Issy Bryant
- 17 Sophie Peskett
- 19 Ella Rutherford
- 20 Megan Wearing
- 21 Maisy Baker
- 22 Evie Williams
- 23 Shauna Guyatt
- 24 Angela Addison
- 31 Laura Hartley



@CTWomenFC

TODAY'S MATCH OFFICIALS

Referee:

Abigail Freullet

Assistant Referees:

Matthew Dickinson &
John Hookway