

THE

OFFICIAL MATCHDAY MAGAZINE OF CHELTENHAM TOWN WOMEN FC | ISSUE 07

ROBINESSES REVIEW



CHELTENHAM TOWN WFC V YEOVIL TOWN WFC
ADOBE WOMEN'S FA CUP FIRST ROUND PROPER
SUNDAY NOVEMBER 3, 2024 | 2:00PM

£1.50



**MAKE
FOOTBALL
EVERYONE'S
GAME.**



**FINANCIAL
FITNESS GROUP**

Proud Partners of
Gloucestershire's Largest Women's Football Club



**CHEL TENHAM TOWN
WOMEN FC**

ANDY LIDDLE

• Cheltenham Town Women FC's Chairman shares his thoughts ahead of today's fixture



Welcome back. If you read my notes in the last programme, I'd like to retract everything I said... we'd love to play Wolves Women every week, Chairmen know nothing!

Today, we are delighted to welcome the players, staff and fans of Yeovil Town Women FC to Kayte Lane for this Adobe Women's FA Cup First Round fixture.

The original Yeovil Town Ladies FC, the former Women's Super League outfit, made the Fifth Round Proper of the Women's FA Cup and later became Bridgwater United Women.

Yeovil Town Women FC reformed for the 2023/4 season and went on to win their first ten games at County League Level, before being promoted to the South-West Regional League Division One South. We lost 3-1 to the original Yeovil during a pre-season friendly back in the days when I was manager (2012!), but this represents our first competitive meeting.

Things came together in very windy conditions in our last home game against Wolves in the FA WNL League Plate, and we have now drawn Stockport County Ladies FC away in the Quarter-Final, to be played on Sunday December 1st.

Last week's match with Lewes was a tough one. Officials 20 minutes late, with one going down with an injury... resulting in another 20-minute delay, a couple of dubious decisions... it really does go to show the fine balance between Clubs in these Tier Three games. We

were good in parts, and yet somehow on the wrong end of a 3-0 result, which just didn't reflect the game.

We're expecting a bounce-back this afternoon.

Get behind the Robinesses, show your support and roar the girls to victory!

Enjoy the game

**Andy Liddle,
Chairman**





Tom **DAVIES**

• The Robinesses Manager looks ahead to today's game...

Good afternoon, and welcome to Kayte Lane for today's fixture against Yeovil Town. I'd like to welcome Yeovil, their staff, players, and supporters to today's Adobe Women's FA Cup First Round tie and congratulate them on their run so far in the competition.

Once again, we've had the ups and downs of football presenting themselves to us with a fantastic win here against Wolves Women who will be fighting for number one spot in the Northern Premier come the end of the season followed by a disappointing defeat away at Lewes, although with a really strong performance and a lot of positives to take from the weekend, unfortunately we left empty handed.

We understand that results need to follow these positive performances and everyone

within the camp both believes that these will occur soon and are continuing to work hard in the pursuit of back-to-back wins, progression in cup competitions and improvement in league form.

The next seven weeks in the lead up to the Christmas break will be a huge statement of where we want to be with FA Cup starting today and hopefully continuing throughout November and December, a Plate Quarter Final vs Stockport with the opportunity to progress to a national semi-final, and three league fixtures against Ipswich, Plymouth and MK Dons to get our teeth into, it's an exciting time to be able to perform in important fixtures and key that we have as much support from you all throughout this journey!

**Enjoy the game,
Tom**

Adobe **WFA CUP MEMORIES**

"PLAYING AGAINST MANCHESTER UNITED FOR BRIDGWATER "

- FFION LLEWELLYN



MARC PAYNE

PHOTOGRAPHY

I AM AN EXPERIENCED PHOTOGRAPHER BASED IN STROUD WITH OVER 5 YEARS EXPERIENCE CAPTURING A WIDE VARIETY OF PHOTOGRAPHY WITH A DIPLOMA IN PHOTOGRAPHY



PORTRAITS, WEDDINGS & SPORTS

07300562066

[HTTPS://LINKTR.EE/MARCPAYNEPHOTOGRAPHER](https://linktr.ee/marcpaynephotographer)



MATCH ACTION

Sunday 27 October 2024 | 14:00 | FA Women's National League Southern Premier



LEWES FC 3 - 0 CHELTENHAM TOWN WFC



Moore, Brant, Schreimaier, Godfrey, Carpenter (Eze 96), Connolly-Brame, Harvey, Quayle (Gilligan 96), Roche, Adaway (Fatuga-Dada 65), Derhun (Bacon 85)



Smith; Llewellyn, Owen, Wellesley-Davies (Finch 90); Greenwood (Leach 75), Attenborough (Trinci 70), Collis, Bell (Butcher 65), Hateley; Liggett, Lue (Pemberton 70).

After a delayed kick-off, Cheltenham Town Women fell to defeat at the Dripping Pan last Sunday.

A Poppy Derhun first half header, followed by an Olivia Carpenter finish just after the start of the second half, and Derhun's second of the game as the clock ticked down saw the hosts collect all three points.

The Robinesses started brightly, with Lacy-Jai Liggett and Una Lue putting Lewes under pressure. An early foul from Hannah Godfrey on the latter saw the Lewes captain enter the book.

A similar foul moments later, this time on Doris Greenwood, saw Godfrey lucky to not be sent off.

Cheltenham continued to dominate the early proceedings, with Libby Bell's cross being punched out by

Lewes 'keeper, Emily Moore. However, against the run of play, a cross into the Cheltenham box allowed Derhun to open the scoring for the home side. Cheltenham's call for offside was waved away by the officials, which led to Derhun's header, past Mia Smith.

In perhaps the best chance of the half for Tom Davies' side, Greenwood had a shot blocked just before it could trouble Moore in the Rooks' net. At the other end Derhun almost got her brace, but completely missed the ball, which led to Ffion Llewellyn clearing it away and allowing Cheltenham to go in at the break down by just a single goal.

With a flourishing start to the second half, the home side doubled their lead after just four minutes. Sammy Quayle squared it to Carpenter in the area, who slotted well past Smith.

The game then saw its second delay of the day, with the assistant referee picking up an injury. After a short pause, a supporter from the crowd was ready to take the reins and the game resumed.

Cheltenham pushed to halve the deficit, and almost did when Greenwood rounded the Lewes 'keeper, and looked to find either Bell or Lue in the middle, but some superb last ditch defending prevented either striker getting an attempt off.

Lewes wrapped up the game late on as, with 12 minutes from time, Derhun sealed her brace. She shot from distance, and her effort cannoned in off the crossbar.

The defeat sends Cheltenham down to tenth place in the FA WNL Southern Premier, below Gwalia United on goal difference, on eight points.



ROBINESSES SHOP

ctlfc.myshopify.com



CTWFC Mug
£6.50



CTWFC Hat
£13.50



CTWFC Scarf
£13.50

Scan here to access the shop



Items usually available within 24 hours. Items available for pick up only. Items can be picked up from Bishop's Cleeve FC.

JOIN THE LIONESSES SUPPORTERS CLUB



Get access to exclusive competitions,
priority tickets and the latest England news.

[THEFA.COM/JOINLSC](https://www.thefa.com/joinlsc)



LIONESSES
SUPPORTERS CLUB



RESERVE TEAM

FA Women's National League Reserves Division South-West



DATE		OPPOSITION	COMP		POM
Sept 1	A	Moneyfields Reserves	FAWNL RC1	5-11	Norman
Sept 8	A	Swindon Town Dev.	FAWNL RD	0-3	Norman
OCT 6	H	PORTSMOUTH DEV.	FA WNL RD	0-3	NORMAN
Oct 13	A	Moneyfields Reserves	FAWNL RD	3-7	Hale
OCT 27	H	MAIDENHEAD UNITED DEV.	FAWNL RP	3-4	DOWLING
Nov 3	A	AFC Bournemouth Dev.	FAWNL RD		
NOV 10	H	EXETER CITY DEV.	FA WNL RD		
Nov 17	A	Cheltenham Civil Service	GFA WT2		
NOV 24	H	SWINDON TOWN DEV.	FA WNL RD		
Dec 1	A	Keynsham Town Dev.	FAWNL RD		
DEC 8	H	AFC BOURNEMOUTH DEV.	FA WNL RD		
Dec 15	A	Exeter City Dev.	FAWNL RD		
JAN 5	H	MONEYFIELDS RESERVES	FA WNL RD		
Jan 12	A	Portsmouth Dev.	FAWNL RD		
TBA	H	KEYNSHAM TOWN DEV.	FA WNL RD		

FA WNL RD: FA WNL Reserves Division.

FAWNL RP: FA WNL Reserves Plate

POM: Player of the Match (Chosen by opposition).

FAWNL RC: FA WNL Reserves Cup.

GFAWT: GFA Women's Trophy.

CUP CLASSICS

Sunday 3 November 2019 | All Saints Academy | Third Qualifying Round



CHELTENHAM TOWN WFC 4 - 3 EXETER CITY WFC



Panniers, Hallsworth, Dolloway, Butler, Ellis, Fensome, Brown, Bevan (Criddle 82), King (Hitchcox 55), Bartlett (Butterfield 66), Martin.



Barbour-Gresham, Britton, Dumper, Kaptein, May (Bowman 78), Miller, Sharpe, Suominen, Toogood, Tyson (Mundy 46), Watkins

The Robinesses met The Grecians in what would turn out to be a real advert for Women's FA Cup football.

With the fixture being rearranged due to poor weather the previous week, both sides put on a Cup football clinic which saw both Cheltenham's Annie Martin and Exeter's Abbie Britton each bag a hattrick.

The game started with both teams sizing their opposition up, with plenty of confident passing on display. The visitors would have a couple of good openings but struggled to connect the dots in front of the Cheltenham goal.

Despite this promising start, the visitors would find themselves a goal down after 24 minutes, courtesy of Abby Bevan.

Bevan pounced on the loose ball after a Kerry Bartlett tackle and dispatched her first time shot from 25 yards.

Martin doubled the lead after 42 minutes, dancing her way past three Exeter defenders before slotting coolly at the near post.

Cheltenham would go in two goals to the good at half time.

Whatever was said in the Exeter dressing room during the break clearly had an impact, and the Grecians would find themselves halving the deficit on 49 minutes.

After a string of corners, Britton was on hand to stab the ball past Cheltenham 'keeper Bec Panniers in the midst of a goalmouth scramble.

Ten minutes later they would draw level, as Britton gained a bit of space in the box and nodded home a dangerous cross from the left.

Just two minutes later however, Cheltenham would be back in front. Bevan and Bartlett combined again to release Martin on goal, the striker restoring Cheltenham's lead with a confident finish.

With the tension rising, Martin would close out her five star performance by completing her hattrick.

Ella Hitchcox, who had replaced Sarah King on the wing, fired a diagonal ball towards the edge of the box. Martin was given enough time to turn onto her preferred foot and her hard, low drive found the back of the net with just 15 minutes to play.

Exeter would not say die however, and as the clock approached the 90 minute mark, they closed the gap again.

To ensure nobody went home with fingernails left intact, Britton again found a yard in the penalty area and slotted past Panniers with a sublime finish low to her left.

Unfortunately for the Grecians, time was not on their side and despite their incredible fightback, the referee brought an end to a real FA Cup battle with just the one goal between the two sides.

Adobe WFA CUP MEMORIES

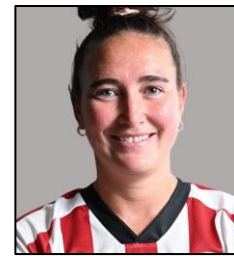
" WATCHING ARSENAL V READING AT WEMBLEY IN THE SEMI-FINAL. I REMEMBER THE ATMOSPHERE BEING SO LOUD, AND ME BEING YOUNG. I LOVED WATCHING MY HOME TOWN TEAM READING BEING THE UNDERDOGS AND BEING 1-1 WITH 20 MINUTES TO GO. IT WAS SUCH AN AMAZING GAME TO WATCH AND ARSENAL GOT THE WIN IN THE END WHICH WAS A WIN-WIN SINCE I'M AN ARSENAL FAN"

- JESS LEACH





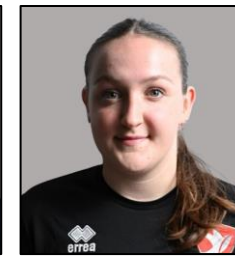
**CHELTENHAM TOWN
WOMEN FC
SQUAD 2024/25**



EMILY OWEN



ELLA PEMBERTON



CARYS PUGH-JONES



MIA SMITH



MEG ATTENBOROUGH



LIBBY BELL

Sponsored By:
MORGAN & CARTER
POWELL



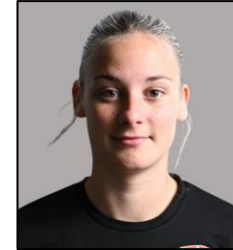
HENNA BUTCHER



MAISY COLLIS



ANAIS TRINCI



LILLY WELLESLEY-DAVIES

Sponsored By:
BLADES BIKES



HOLLY FINCH



DORIS GREENWOOD



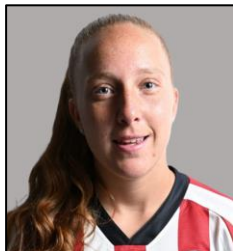
ESME HARRIS



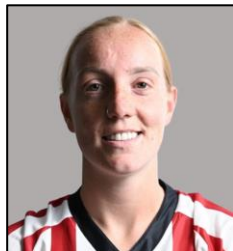
ABBAY HATELEY



JESSICA LEACH

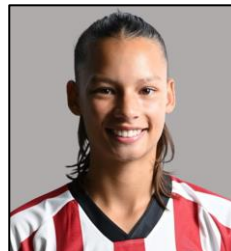


LACY-JAI LIGGETT



FFION LLEWELLYN

Sponsored By:
SPLASH OUT
BATHROOMS



UNA LUE

Sponsored By:
270 CLIMBING

**Contact
commercial@ctwomenfc.com
to sponsor your favourite
player today!**



CHELTENHAM TOWN WOMEN FC

MAKE FOOTBALL EVERYONE'S GAME.



Adobe WFA CUP MEMORIES

"EVERY GAME AGAINST HIGHER LEAGUE OPPOSITION. THAT'S WHAT IT'S ALL ABOUT!"

- HENNA BUTCHER



FIXTURES AND RESULTS

2024/25 Competitive Fixtures



DATE	OPPOSITION	COMP.	ATT.	POM	
AUG					
SUN 18	H PLYMOUTH ARGYLE WOMEN	FAWNLSP	4-0	131	LIGGETT
Sun 25	A MK Dons Women	FAWNLSP	5-0	100	Attenborough
Thur 29	A Worcester City Women	WNLC DR	0-1	181	Owen
SEPT					
SUN 1	H AFC WIMBLEDON WOMEN	FAWNLSP	0-3	137	LUE
Sun 8	A Billericay Town Women	FAWNLSP	1-2	183	Attenborough
SUN 15	H HASHTAG UNITED WOMEN	FAWNLSP	1-1	110	BUTCHER
Sun 22	A Watford FC Women	FAWNLSP	0-2	116	Llewellyn
THUR 26	H GWALIA UNITED	FAWNLSP	2-2	113	LIGGETT
Sun 29	A Boldmere St. Michaels Women	WNLP R1	4-1		Owen
OCT					
Sun 6	A Oxford United Women	FAWNLSP	0-3	168	Butcher
SUN 13	H EXETER CITY WOMEN	FAWNLSP	0-3	117	LLEWELLYN
SUN 20	H WOLVERHAMPTON WANDERERS	WNLP R2	2-1		OWEN
Sun 27	A Lewes FC Women	FAWNLSP	0-3	591	Lue
NOV					
SUN 3	H YEOVIL TOWN WOMEN	AWFAC R1	14:00		
SUN 10	H IPSWICH TOWN WOMEN	FAWNLSP	14:00		
Sun 17	A Plymouth Argyle Women	FAWNLSP	14:00		
DEC					
Sun 1	A Stockport County Ladies	WNLP QF	14:00		
SUN 15	H MK DONS WOMEN	FAWNLSP	14:00		
JAN					
Sun 5	A AFC Wimbledon Women	FAWNLSP	14:00		
SUN 12	H BILLERICAY TOWN WOMEN	FAWNLSP	14:00		
Sun 19	A Bristol Rovers Women	GFA SWC	14:00		
FEB					
SUN 2	H OXFORD UNITED WOMEN	FAWNLSP	14:00		
Wed 12	A Gwalia United	FAWNLSP	19:45		
SUN 16	H PUCKLECHURCH WOMEN	GFA SWC	14:00		
SUN 23	H WATFORD FC WOMEN	FAWNLSP	14:00		
MAR					
Sun 9	A Hashtag United Women	FAWNLSP	14:00		
Sun 23	A Exeter City Women	FAWNLSP	14:00		
APR					
SUN 13	H LEWES FC WOMEN	FAWNLSP	14:00		
Sun 27	A Ipswich Town Women	FAWNLSP	14:00		

Fixture details subject to change.

POM: Player of the Match (as chosen by poll, match sponsor, or opposition where applicable).

FAWNLSP: FA Women's National League Southern Premier

AWFAC: Adobe Women's FA Cup

WNLC / WNLP: FA Women's National League Cup/ Plate

GFA SWC: Gloucestershire FA Senior Women's Cup



TODAY'S TEAMS

CHELTENHAM TOWN WFC

- 01 Mia Smith
- 02 Anais Trinci
- 03 Abbey Hateley
- 04 Holly Finch
- 06 Maisy Collis
- 07 Lacy-Jai Liggett
- 08 Megan Attenborough
- 10 Libby Bell
- 11 Esme Harris
- 12 Henna Butcher
- 13 Ffion Llewellyn
- 14 Wellesley-Davies
- 15 Emily Owen (c)
- 16 Ella Pemberton
- 17 Doris Greenwood
- 19 Jessica Leach
- 21 Una Lue
- 30 Carys Pugh-Jones

YEOVIL TOWN WFC

- Zoe Ball
- Chloe Bateman
- Ava Beattie
- Hannah Bishop
- Jamie Bland
- Emma Brazell
- Abbie Carslake
- Annie-Rose Chalmers
- Laura Cheesman
- Gabby Coles
- Georgia Coles
- Chloe Davenport
- Rebecca de Havilland
- Orla East
- Daisy Evans
- Katie Evans
- Emily Hall
- Jess Hodge
- Hannah Hughes
- Charlotte Johnson
- Martha Macpherson
- Becky Miles
- Niamh Nicholls
- Chloe Perham
- Lois Roadnight
- Lindsey Roe
- Lesley Spearing
- Abbie Vernon
- Laura Wensley
- Terri Will



@CTWomenFC

TODAY'S MATCH OFFICIALS

Referee:

Stuart Parker

Assistant Referees:

Harry Organ &
Sam Myatt