

THE

OFFICIAL MATCHDAY MAGAZINE OF CHELTENHAM TOWN WOMEN FC | ISSUE 06

ROBINESSES REVIEW



CHELTENHAM TOWN WFC V WOLVERHAMPTON WANDERERS WFC
FA WOMEN'S NATIONAL LEAGUE PLATE
SUNDAY OCTOBER 20, 2024 | 2:00PM

£1.50



**MAKE
FOOTBALL
EVERYONE'S
GAME.**



FINANCIAL FITNESS GROUP

Proud Partners of
Gloucestershire's Largest Women's Football Club



**CHELTEMHAM TOWN
WOMEN FC**

ANDY LIDDLE

• Cheltenham Town Women FC's Chairman shares his thoughts ahead of today's fixture



We are delighted to welcome the players, staff and fans of Wolverhampton Wanderers Women FC to Kayte Lane, for our first competitive match.

With just 55 miles separating the City of Wolverhampton from Cheltenham Town, you might imagine we would have met a few times over the years. The answer to why we haven't lies at the heart of a conversation I had with the FA's hierarchy only last month.

Tier Three is currently split FA WNL North and South, with the boundary changing season by season based on which teams are promoted to and relegated from the Women's Championship, what happens with FA WNL North relegation, FA WNL South relegation, and which teams are promoted from the various FA WNL Division One leagues each season.

Sound like a nightmare? It is. Whilst clearly the FA need to have rules and a mechanism for promotion/relegation each season, some teams will be more affected than others, and Cheltenham as one of the most Northern points in the Southern Premier is right up there, whilst Plymouth (for example) will always remain unaffected.

Why mention this, and why the dialogue with the FA? Think player recruitment and retention. Having won promotion from the Division One South West, our player pool has always typically been drawn from the M4/M5 corridor, Cardiff to Swindon, Bristol to Worcester... clearly there will always be the odd exception.

Rugby Borough (previously Coventry United) were moved from the Southern to Northern division last year. If that happened to us, every player would have an hour/an hour-and-a-half to travel just to get to Cheltenham, before progressing on to the likes of Liverpool, Burnley, Halifax etc... unpalatable. Players want to play football, and the higher the standard, the further they expect to travel to train and play. But no one sets out to spend their Sundays travelling all day, with an early start and late finish.

I haven't even touched on some of the major implications, like travel budgets, and how a manager might go about the business of 'managing', when they aren't sure which part of the North/South divide they may be competing in one season from the next.

If you've got this far, you'll have realised I've spent 30 hours on planes over the last week or so. No WIFI, no disturbances... plenty of thinking time. All I've done is outline the problem. If you have a viable solution, do please get in touch via chairman@ctwomenfc.com and you have my word I'll present it to the FA.

If you're reading this and you're from Wolves, then all the very best for the rest of the season and going forwards. Don't take it personally, but I hope we never meet in the league!

Andy Liddle,
Chairman





Tom **DAVIES**

• The Robinesses Manager looks ahead to today's game...

Good afternoon, and welcome to Kayte Lane for today's fixture against Wolves Women. I'd like to welcome to Dan, their staff, players, and supporters to today's game in the FA WNL Plate Competition.

Firstly, I'd like to congratulate Dan on his permanent full-time appointment as the Wolves Women Gaffer, which is thoroughly deserved after years of work and results. We've had a couple of tough pre-season fixtures over the years, and it'll be great to get this game on in a competitive contest between the sides.

We've not had the run of results or that little bit of luck we've been craving recently, but in the most part performances are improving and after a transitional summer we're working hard to ensure that our identity as a team reflects

both The Club, our coaches, and the players within it. We're united in the pursuit of changing results, which during tough moments is arguably the most important thing and I'm buoyed that we have the people we do here, fighting in the trenches as we are, knowing that good things happen to good people over time and that we'll soon be putting on high level performances and getting ourselves back moving in the right direction.

We will get this right, it will come together and I'm confident as are everyone within our circle, that when we do, we won't be looking back, and that a run of results will come when we need it the most.

Enjoy the match,

Tom

UPCOMING...



**YEOVIL TOWN
WOMEN**

SUNDAY 3 NOVEMBER
14:00



Use code "FACUP30" at checkout before October 25th to save 30%*



**IPSWICH TOWN
WOMEN**

SUNDAY 10 NOVEMBER
14:00



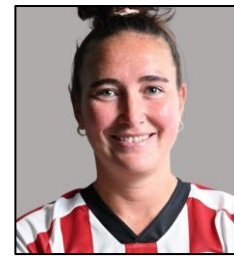
**270
CLIMBING**

TICKETS AVAILABLE AT
[TICKETTAILOR.COM/EVENTS/CHELTHENHMTOWNWOMENFC](https://www.tickettailor.com/events/cheltenhamtownwomenfc)

*Discount only available until 00:00 October 25th 2024. Fixture details subject to change



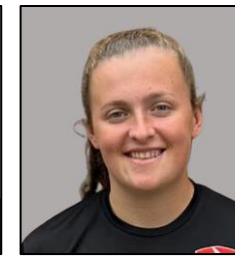
**CHELTENHAM TOWN
WOMEN FC
SQUAD 2024/25**



EMILY OWEN



ELLA PEMBERTON



CONNIE PENGELLY



CARYS PUGH-JONES



MEG ATTENBOROUGH



LIBBY BELL

Sponsored By:
MORGAN & CARTER
POWELL



HENNA BUTCHER



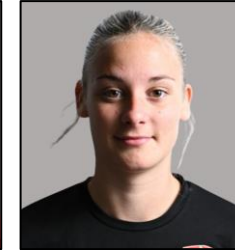
MAISY COLLIS



MIA SMITH



AN AIS TRINCI



LILLY WELLESLEY-DAVIES

Sponsored By:
BLADES BIKES



HOLLY FINCH



DORIS GREENWOOD



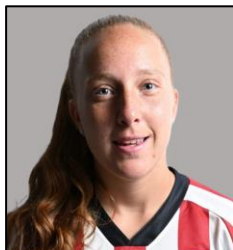
ESME HARRIS



ABB EY HATELEY



JESSICA LEACH

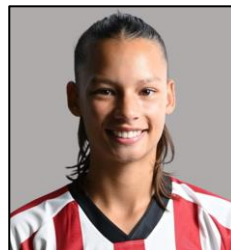


LACY-JAI LIGGETT



FFION LLEWELLYN

Sponsored By:
SPLASH OUT
BATHROOMS



UNA LUE

Sponsored By:
270 CLIMBING

**Contact
commercial@ctwomenfc.com
to sponsor your favourite
player today!**



RESERVE TEAM

FA Women's National League Reserves Division South-West



DATE		OPPOSITION	COMP		POM
Sept 1	A	Moneyfields Reserves	FAWNL RC1	5-11	Norman
Sept 8	A	Swindon Town Dev.	FAWNL RD	0-3	Norman
OCT 6	H	PORTSMOUTH DEV.	FA WNL RD	0-3	NORMAN
Oct 13	A	Moneyfields Reserves	FAWNL RD	3-7	Hale
OCT 20	H	KEYNSHAM TOWN DEV.	FA WNL RD		
OCT 27	H	MAIDENHEAD UNITED DEV.	FAWNL RP		
Nov 3	A	AFC Bournemouth Dev.	FAWNL RD		
NOV 10	H	EXETER CITY DEV.	FA WNL RD		
Nov 17	A	Cheltenham Civil Service	GFA WT2		
NOV 24	H	SWINDON TOWN DEV.	FA WNL RD		
Dec 1	A	Keynsham Town Dev.	FAWNL RD		
DEC 8	H	AFC BOURNEMOUTH DEV.	FA WNL RD		
Dec 15	A	Exeter City Dev.	FAWNL RD		
JAN 5	H	MONEYFIELDS RESERVES	FA WNL RD		
Jan 12	A	Portsmouth Dev.	FAWNL RD		

FA WNL RD: FA WNL Reserves Division.
 FAWNL RC: FA WNL Reserves Cup.
 FAWNL RP: FA WNL Reserves Plate
 GFAWT: GFA Women's Trophy.

POM: Player of the Match (Chosen by opposition).



ROBINNESSES SHOP

ctlfc.myshopify.com



CTWFC Mug
£6.50



CTWFC Hat
£13.50



CTWFC Scarf
£13.50

Scan here to access
the shop



Items usually available within 24 hours. Items available for pick up only. Items can be picked up from Bishop's Cleeve FC.



MARC PAYNE

PHOTOGRAPHY

I AM AN EXPERIENCED PHOTOGRAPHER BASED IN STROUD WITH OVER 5 YEARS EXPERIENCE CAPTURING A WIDE VARIETY OF PHOTOGRAPHY WITH A DIPLOMA IN PHOTOGRAPHY



PORTRAITS, WEDDINGS & SPORTS

07300562066

[HTTPS://LINKTR.EE/MARCPAYNEPHOTOGRAPHER](https://linktr.ee/marcpaynephotographer)



FIXTURES AND RESULTS

2024/25 Competitive Fixtures



DATE	OPPOSITION	COMP.	ATT.	POM	
AUG					
SUN 18	H PLYMOUTH ARGYLE WOMEN	FAWNLSP	4-0	131	LIGGETT
Sun 25	A MK Dons Women	FAWNLSP	5-0	100	Attenborough
Thur 29	A Worcester City Women	WNLC DR	0-1	181	Owen
SEPT					
SUN 1	H AFC WIMBLEDON WOMEN	FAWNLSP	0-3	137	LUE
Sun 8	A Billericay Town Women	FAWNLSP	1-2	183	Attenborough
SUN 15	H HASHTAG UNITED WOMEN	FAWNLSP	1-1	110	BUTCHER
Sun 22	A Watford FC Women	FAWNLSP	0-2	116	Llewellyn
THUR 26	H GWALIA UNITED	FAWNLSP	2-2	113	LIGGETT
Sun 29	A Boldmere St. Michaels Women	WNLP R1	4-1		Owen
OCT					
Sun 6	A Oxford United Women	FAWNLSP	0-3	168	Butcher
SUN 13	H EXETER CITY WOMEN	FAWNLSP	0-3	117	LLEWELLYN
SUN 20	H WOLVERHAMPTON WANDERERS	WNLP R2	14:00		
Sun 27	A Lewes FC Women	FAWNLSP	14:00		
NOV					
SUN 3	H YEOVIL TOWN WOMEN	AWFAC R1	14:00		
SUN 10	H IPSWICH TOWN WOMEN	FAWNLSP	14:00		
Sun 17	A Plymouth Argyle Women	FAWNLSP	14:00		
DEC					
SUN 15	H MK DONS WOMEN	FAWNLSP	14:00		
JAN					
Sun 5	A AFC Wimbledon Women	FAWNLSP	14:00		
SUN 12	H BILLERICAY TOWN WOMEN	FAWNLSP	14:00		
Sun 19	A Bristol Rovers Women	GFA SWC	14:00		
FEB					
SUN 2	H OXFORD UNITED WOMEN	FAWNLSP	14:00		
Wed 12	A Gwalia United	FAWNLSP	19:45		
SUN 16	H PUCKLECHURCH WOMEN	GFA SWC	14:00		
SUN 23	H WATFORD FC WOMEN	FAWNLSP	14:00		
MAR					
Sun 9	A Hashtag United Women	FAWNLSP	14:00		
Sun 23	A Exeter City Women	FAWNLSP	14:00		
APR					
SUN 13	H LEWES FC WOMEN	FAWNLSP	14:00		
Sun 27	A Ipswich Town Women	FAWNLSP	14:00		

Fixture details subject to change.

POM: Player of the Match (as chosen by poll, match sponsor, or opposition where applicable).

FAWNLSP: FA Women's National League Southern Premier

WNLC / WNLP: FA Women's National League Cup/ Plate

AWFAC: Adobe Women's FA Cup

GFA SWC: Gloucestershire FA Senior Women's Cup



TODAY'S TEAMS

CHELTENHAM TOWN WFC

- 01 Mia Smith
- 02 Anais Trinci
- 03 Abbey Hateley
- 04 Holly Finch
- 06 Maisey Collis
- 07 Lacy-Jai Liggett
- 08 Megan Attenborough
- 09 Connie Pengelly
- 10 Libby Bell
- 11 Esme Harris
- 12 Henna Butcher
- 13 Ffion Llewellyn
- 14 Wellesley-Davies
- 15 Emily Owen (c)
- 16 Ella Pemberton
- 17 Doris Greenwood
- 19 Jessica Leach
- 21 Una Lue
- 30 Carys Pugh-Jones

WOLVERHAMPTON WANDERERS WFC

- 01 Maddison Elbro
- 03 Anna Morphet
- 04 Summer Holmes
- 05 Emma Cross
- 07 Tammi George
- 08 Merrick Will
- 09 Jade Cross
- 10 Abi Loydon
- 11 Amber Hughes
- 12 Charlotte Greengrass
- 13 Bec Thomas
- 14 Martha McPhail
- 15 Layla Banaras
- 17 Katie Johnson
- 18 Hannah Fryer
- 19 Becky Anderson
- 20 Ania Denham
- 21 Destiney Toussaint
- 22 Beth Roberts
- 23 Josie Smith
- 25 Ameilia Hiscox
- 27 Abbie Jenner
- 30 Charlotte Clarke
- 31 Skye Owen
- 33 Libby Hart



@CTWomenFC

TODAY'S MATCH OFFICIALS

Referee:

Imogen Hooper

Assistant Referees:

Emily Critchley &

Andrew Nesbitt