

THE

OFFICIAL MATCHDAY MAGAZINE OF CHELTENHAM TOWN WOMEN FC | ISSUE 05

ROBINESSES REVIEW



CHELTENHAM TOWN WFC V EXETER CITY WFC
FA WOMEN'S NATIONAL LEAGUE SOUTHERN PREMIER
SUNDAY OCTOBER 13, 2024 | 2:00PM

£1.50



**MAKE
FOOTBALL
EVERYONE'S
GAME.**



**FINANCIAL
FITNESS GROUP**

Proud Partners of
Gloucestershire's Largest Women's Football Club



**CHELTENHAM TOWN
WOMEN FC**

ANDY LIDDLE

• Cheltenham Town Women FC's Chairman shares his thoughts ahead of today's fixture



Welcome back to Kayte Lane for today's fixture against Exeter City Women.

I'd like to welcome the staff, players, and supporters of the Grecians to today's game. I can say without any doubt, if last year's clash in the Adobe Women's FA Cup is anything to go by, this game promises to be an absolute cracker!

Exeter have had a flying start to the season after winning promotion from the FA WNL Division One South-West last season, and currently find themselves fourth in the league.

Recently we've been playing well without quite hitting top gear for the full 90+ minutes, and that is the challenge right there, both this weekend and next, when we entertain Wolves Women in the FA Women's National League Plate. Tickets for that game are available right now.

Our mascots are drawn from our youth ranks today, testament to the work we are doing with local youngsters in developing the pathway through to Women's Football.

Welcome along girls and we wish you a fantastic afternoon with us today.

Also, I'd like to wish a big, huge well done and congratulations to our U10s for winning the Charity Shield – Celebrations pictured below!

Finally, good luck to our Reserves who are away at Moneyfields this afternoon, it's a busy programme for everyone involved with the club.

Make loads of noise today, show your support, and most importantly, enjoy the game,

**Andy Liddle,
Chairman**





- The Robinesses Manager looks ahead to today's game...

Good afternoon, and welcome to Kayte Lane for today's fixture as we face Exeter City Women.

I'd like to welcome to Abbie, their staff, players, and supporters to today's game, the first contest the sides have played against one another in Tier Three after duels in Tier Four and cup competitions previously. I hope you have an enjoyable afternoon and safe journeys home afterwards too.

Recent weeks have been a mixture of results, performances, and emotions. We followed up a positive performance against Watford with an outstanding first half against Gwalia, getting ourselves in-front and frustratingly a fresh Gwalia side managed to level the scoreline and minus an incident I won't elaborate on, we were unfortunate not to have been given the chance to take all three points which on the scale of the game, I felt we deserved.

We put out a bit part performance against Oxford last weekend and we were deservedly punished for not being at our best, but there's a lot of good happening, a lot of positive decisions being made, and our work rate has been very good.

We're not far away from connecting things together, producing those 90-minute

performances you need in this division to provide the results we're after, and must respect the journey we continue to be on.

Players and staff alike are working hard behind the scenes and we're positive that a good run of back-to-back performances and results are around the corner.

Enjoy the game,

Tom

MATCH ACTION

Sunday 6 October 2024 | 14:00 | FA Women's National League Southern Premier



OXFORD UNITED WFC 3 - 0 CHELTENHAM TOWN WFC



Howard, Gibson, Wiseman (Trinder 90), Creaney, Barratt, Poole (Lindbaek 65), Sealey (King 81), Gotch, Oliver, Burridge, Budaieva (Richardson 78)



Smith; Llewellyn, Owen, Wellesley-Davies, Trinci (Collis 74), Pemberton; Greenwood, Attenborough (Leach 74) Bell (Pengelly 82); Butcher, Lue

It wasn't Cheltenham Town Women's day as they fell to a 3-0 defeat against Oxford United last Sunday.

An early Zoe Barratt penalty, followed by her second just nine minutes into the second half gave the home side a comfortable lead, with a Kate Wiseman securing all three points with a free-kick.

The contest started fairly even, as each side tried to establish their footing in the game and size the other up.

Oxford's first proper foray into the Cheltenham box saw Ffion Llewellyn bring down Taome Oliver. The referee didn't hesitate to the point to the spot, allowing Barratt to put the U's ahead, beating Cheltenham goalkeeper Mia Smith to her right.

Buoyed by the early lead, the home side quickly looked for a second, with Ruby Sealey

firing just wide from a good opening.

This woke Cheltenham up, with the visiting side growing into the game and creating a plethora of chances.

Libby Bell set up Henna Butcher with a dangerous cross but the Cheltenham forward was unable to make contact to steer the ball towards goal. Shortly after, Doris Greenwood came close to securing her fourth goal of the season with two good attempts, the first looping up narrowly over, before her second shot cannoned off the crossbar.

Any further ventures into the Oxford area were dealt with by U's goalkeeper Alice Howard, who stood strong and kept her side 1-0 up as the teams went in at the break.

The Robinesses picked up where they left off after the break, with a stinging Meg

Attenborough shot forcing a stop from Howard just five minutes in.

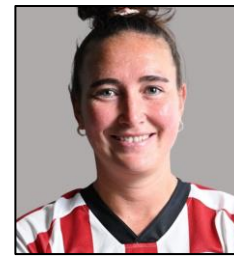
Minutes later however, the U's doubled their lead. Barratt bagged her brace after racing down the wing before firing past Smith. Oxford nearly got their third with the very next attack, but Smith was able to push it behind for a corner.

At the other end, Butcher came close as Cheltenham responded but Howard was on hand to provide the stop, before Connie Pengelly's long-range effort landed on the roof of the Oxford net.

Despite the spell of Cheltenham pressure, it was Oxford who would have the final say. With the clock ticking down, Kate Wiseman stepped up to make it three for the Yellows as her free-kick beat the wall and evaded Smith, capping off a bad day at the office for The Robinesses.



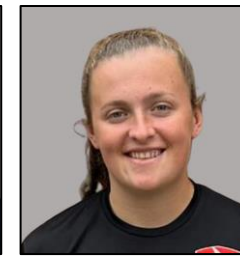
CHELTHENHAM TOWN WOMEN FC SQUAD 2024/25



EMILY OWEN



ELLA PEMBERTON



CONNIE PENGELLY



CARYS PUGH-JONES



MEG ATTENBOROUGH



LIBBY BELL

Sponsored By:
MORGAN & CARTER
POWELL



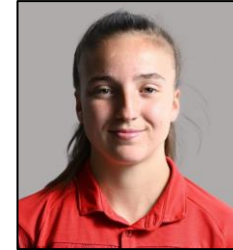
HENNA BUTCHER



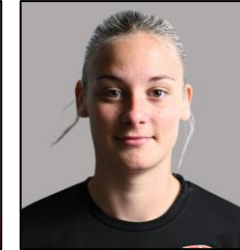
MAISY COLLIS



MIA SMITH

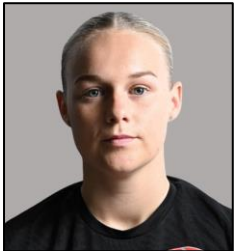


AN AIS TRINCI



LILLY WELLESLEY-DAVIES

Sponsored By:
BLADES BIKES



HOLLY FINCH



DORIS GREENWOOD



ESME HARRIS



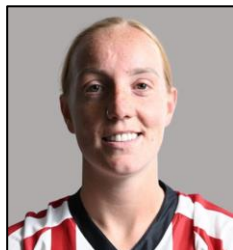
ABB EY HATELEY



JESSICA LEACH

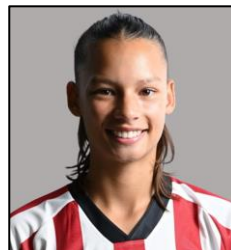


LACY-JAI LIGGETT



FFION LLEWELLYN

Sponsored By:
SPLASH OUT
BATHROOMS



UNA LUE

Sponsored By:
270 CLIMBING

**Contact
commercial@ctwomenfc.com
to sponsor your favourite
player today!**



RESERVE TEAM

FA Women's National League Reserves Division South-West



DATE		OPPOSITION	COMP		POM
Sept 1	A	Moneyfields Reserves	FAWNL RC1	5-11	Norman
Sept 8	A	Swindon Town Dev.	FAWNL RD	0-3	Norman
OCT 6	H	PORTSMOUTH DEV.	FA WNL RD	0-3	Norman
Oct 13	A	Moneyfields Reserves	FAWNL RD		
OCT 20	H	KEYNSHAM TOWN DEV.	FA WNL RD		
OCT 27	H	MAIDENHEAD UNITED DEV.	FAWNL RP		
Nov 3	A	AFC Bournemouth Dev.	FAWNL RD		
NOV 10	H	EXETER CITY DEV.	FA WNL RD		
Nov 17	A	Cheltenham Civil Service	GFA WT2		
NOV 24	H	SWINDON TOWN DEV.	FA WNL RD		
Dec 1	A	Keynsham Town Dev.	FAWNL RD		
DEC 8	H	AFC BOURNEMOUTH DEV.	FA WNL RD		
Dec 15	A	Exeter City Dev.	FAWNL RD		
JAN 5	H	MONEYFIELDS RESERVES	FA WNL RD		
Jan 12	A	Portsmouth Dev.	FAWNL RD		

FA WNL RD: FA WNL Reserves Division.
 FAWNL RC: FA WNL Reserves Cup.
 FAWNL RP: FA WNL Reserves Plate
 GFAWT: GFA Women's Trophy.

POM: Player of the Match (Chosen by opposition).



ROBINESSES SHOP

ctlfc.myshopify.com



CTWFC Mug
£6.50



CTWFC Hat
£13.50



CTWFC Scarf
£13.50

Scan here to access
the shop



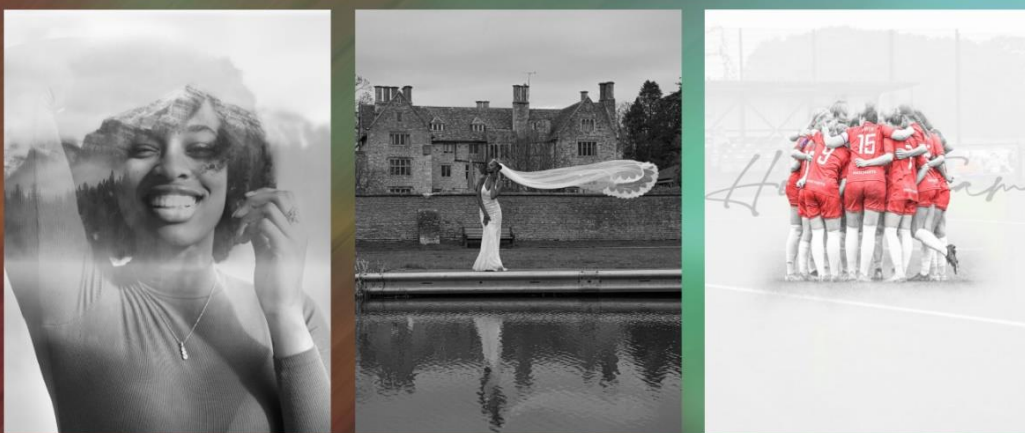
Items usually available within 24 hours. Items available for pick up only. Items can be picked up from Bishop's Cleeve FC.



MARC PAYNE

PHOTOGRAPHY

I AM AN EXPERIENCED PHOTOGRAPHER BASED IN STROUD WITH OVER 5 YEARS EXPERIENCE CAPTURING A WIDE VARIETY OF PHOTOGRAPHY WITH A DIPLOMA IN PHOTOGRAPHY



PORTRAITS, WEDDINGS & SPORTS

07300562066

[HTTPS://LINKTR.EE/MARCPAYNEPHOTOGRAPHER](https://linktr.ee/marcpaynephotographer)



FIXTURES AND RESULTS

2024/25 Competitive Fixtures



DATE	OPPOSITION	COMP.	ATT.	POM
AUG				
SUN 18	H PLYMOUTH ARGYLE WOMEN	FAWNLSP	4-0	131 LIGGETT
Sun 25	A MK Dons Women	FAWNLSP	5-0	100 Attenborough
Thur 29	A Worcester City Women	WNLC DR	0-1	181 Owen
SEPT				
SUN 1	H AFC WIMBLEDON WOMEN	FAWNLSP	0-3	137 LUE
Sun 8	A Billericay Town Women	FAWNLSP	1-2	183 Attenborough
SUN 15	H HASHTAG UNITED WOMEN	FAWNLSP	1-1	110 BUTCHER
Sun 22	A Watford FC Women	FAWNLSP	0-2	116 Llewellyn
THUR 26	H GWALIA UNITED	FAWNLSP	2-2	113 LIGGETT
Sun 29	A Boldmere St. Michaels Women	WNLP R1	4-1	Owen
OCT				
Sun 6	A Oxford United Women	FAWNLSP	0-3	168 Butcher
SUN 13	H EXETER CITY WOMEN	FAWNLSP	14:00	
SUN 20	H WOLVERHAMPTON WANDERERS	WNLP R2	14:00	
Sun 27	A Lewes FC Women	FAWNLSP	14:00	
NOV				
Sun 3	Adobe Women's FA Cup First Round			
SUN 10	H IPSWICH TOWN WOMEN	FAWNLSP	14:00	
Sun 17	A Plymouth Argyle Women	FAWNLSP	14:00	
DEC				
SUN 15	H MK DONS WOMEN	FAWNLSP	14:00	
JAN				
Sun 5	A AFC Wimbledon Women	FAWNLSP	14:00	
SUN 12	H BILLERICAY TOWN WOMEN	FAWNLSP	14:00	
Sun 19	A Bristol Rovers Women	GFA SWC	14:00	
FEB				
SUN 2	H OXFORD UNITED WOMEN	FAWNLSP	14:00	
Wed 12	A Gwalia United	FAWNLSP	19:45	
SUN 16	H PUCKLECHURCH WOMEN	GFA SWC	14:00	
SUN 23	H WATFORD FC WOMEN	FAWNLSP	14:00	
MAR				
Sun 9	A Hashtag United Women	FAWNLSP	14:00	
Sun 23	A Exeter City Women	FAWNLSP	14:00	
APR				
SUN 13	H LEWES FC WOMEN	FAWNLSP	14:00	
Sun 27	A Ipswich Town Women	FAWNLSP	14:00	

Fixture details subject to change.

POM: Player of the Match (as chosen by poll, match sponsor, or opposition where applicable).

FAWNLSP: FA Women's National League Southern Premier

WNLC / WNLP: FA Women's National League Cup/ Plate

AWFAC: Adobe Women's FA Cup

GFA SWC: Gloucestershire FA Senior Women's Cup



TODAY'S TEAMS

CHELTENHAM TOWN WFC

- 01 Mia Smith
- 02 Anais Trinci
- 03 Abbey Hateley
- 04 Holly Finch
- 06 Maisy Collis
- 07 Lacy-Jai Liggett
- 08 Megan Attenborough
- 09 Connie Pengelly
- 10 Libby Bell
- 11 Esme Harris
- 12 Henna Butcher
- 13 Ffion Llewellyn
- 14 Wellesley-Davies
- 15 Emily Owen (c)
- 16 Ella Pemberton
- 17 Doris Greenwood
- 19 Jessica Leach
- 21 Una Lue
- 30 Carys Pugh-Jones
- Lexie North

EXETER CITY WFC

- 01 Abbi Bond
- 02 Bow Jackson
- 03 Emily Toogood
- 04 Jaydee Seaman
- 06 Jess Sandland
- 07 Phoebe Baker
- 08 Beth Ireland
- 10 Sarah Stacey
- 11 Jade Grove
- 12 Courtney Jones
- 14 Georgie Barbour-Gresham
- 15 Isbhel Zuurmond
- 16 Zoe Watkins
- 17 Zoe Cunningham
- 19 Mollie Taylor
- 20 Matilda Franchi
- 21 Sophie Gillies
- 22 Liv Giles
- 23 Amber Pollock
- 24 Amy Wathan
- 25 Steph Beck
- 27 Jess Cockayne
- 28 Lemoni Gouldstone
- 30 Jas Read
- 31 Lily Dowling



@CTWomenFC

TODAY'S MATCH OFFICIALS

Referee:

Robert Pealing

Assistant Referees:

Aaron Baker &

Roger Smith