

THE

OFFICIAL MATCHDAY MAGAZINE OF CHELTENHAM TOWN WOMEN FC | ISSUE 03

# ROBINESSES REVIEW



CHELTENHAM TOWN WFC V HASHTAG UNITED WFC  
FA WOMEN'S NATIONAL LEAGUE SOUTHERN PREMIER  
SUNDAY SEPTEMBER 15, 2024 | 2:00PM

**£1.50**



**MAKE  
FOOTBALL  
EVERYONE'S  
GAME.**



**FINANCIAL  
FITNESS GROUP**

**Proud Partners of**  
Gloucestershire's Largest Women's Football Club



**CHELtenham TOWN  
WOMEN FC**

## ANDY LIDDLE

• Cheltenham Town Women FC's Chairman shares his thoughts ahead of today's fixture



**Welcome back to Kayte Lane for another top-flight Women's football match in the Southern Premier Division of the FA Women's National League.**

Occasionally I just need to remind myself that we play at this level, having come so far over the last decade.

After the euphoria of winning our opening two league games, we've lost our last two – the perfect reminder of just how tough life can be in this division. The players need your help this afternoon... it's never been more important to get behind the team, and provide the boost needed to get back to winning ways. Thank you.

We welcome the players, supporters, directors and staff from Hashtag United this afternoon. We enjoyed a great away win last season, but Hashtag got their well-deserved revenge here at Kayte Lane. I'm sure it will be another very competitive game this afternoon.

We've been drawn away to the winners of Boldmere St. Michaels and Lincoln City in the First Round of the FA WNL Plate. Keep your eye on the club website for details of the fixture – [www.ctwomenfc.com](http://www.ctwomenfc.com) and further fixture changes as we came close to a frost this week (September!) so fixtures will become weather dependent very quickly. Hats, scarfs, and gloves will be available from our next home game!

We are delighted to welcome new player sponsors [www.splashoutbathrooms.com](http://www.splashoutbathrooms.com) to the Cheltenham Town Women family. Our social media reach exceeds 10,000 now and has been consistently growing year on year.

The audience is mainly female, and sponsorship is relatively inexpensive. Indeed, it is unlikely there is a more cost-effective channel to get your message across to such a sizeable group.

Get in touch via [commercial@ctwomenfc.com](mailto:commercial@ctwomenfc.com) to find out how we can help your business.

As always, thank you all for your fantastic support, and enjoy the game.

**Andy Liddle,  
Chairman**





- The Robynesses Manager looks ahead to today's game...

### Good afternoon, and welcome to Kayte Lane for our fixture against Hashtag United.

Following a successful August with two league wins from two, we've found ourselves on the end of two unfortunate results. However, as we've alluded to and discussed, these are not without positive and progressive performances.

First half against Wimbledon we'd performed well and following the set play goals found ourselves chasing the game in the second half.

Although similarities are within the Billericay performance, regarding being down by two at half time having played well, our performance and reaction within the second half was much better and overall, our performance deserved more, but we're not finding that missing link yet.

These continued "step ups" within performances and our training outcomes are things to be positive about, the group is improving and as they continue to connect and understand each other on the pitch, these results will turn around and be the foundation that our season will be built on this year.

I'd like to extend a welcome to Jason and his staff, players and supporters to today's game

and congratulate them on a fantastic season last time out.

With two very different performances against our visitors last season, we're hoping for a repeat of the away performance and result, as we look to build on the start we've made this season.

Thank you all for your support again today. Make some noise and show your support for the Robynesses.

### Enjoy the game,

Tom

## MATCH ACTION

Sunday 8 September 2024 | 14:00 | FA Women's National League Southern Premier



### BILLERICAY TOWN WFC 2 - 1 CHELTENHAM TOWN WFC



Watson, Jackson, Priest, Horwood, Wellington, Houghton, Grant (O'Shea 68), Parker (Evans 79), Munnely (A. Smith 77), Francis-Weir, Hickman



M. Smith; Sharpe (Wellesley-Davies 90+2), Llewellyn, Owen; Trinci (Bell 67), Hateley (Greenwood 57), Collis (Pemberton 45), Liggett, Attenborough (Pengelly (84); Lue, Butcher.

#### Cheltenham Town Women suffered a close defeat away to Billericay Town, courtesy of a Jessica Francis-Weir brace.

Despite an early chance for Cheltenham's Lacy-Jai Liggett forcing a good save from former Robynesses 'keeper Aimee Watson, it was Francis-Weir who had the home side ahead with just five minutes on the clock.

The striker's pressure on the Cheltenham defence presented a chance, which she dispatched at Mia Smith's near post.

Cheltenham responded by setting to work putting Watson to the sword, calling her into action several times.

Despite constant pressure from Una Lue and Megan Attenborough, Cheltenham were unable to fashion a dangerous opportunity.

With 37 minutes on the clock, Francis-Weir struck home to double the home side's advantage.

Manager, Tom Davies, rang the Cheltenham changes at half time with Ella Pemberton replacing Maisy Collis.

Cheltenham resumed putting the home side under pressure, producing a string of good chances.

Following another solid attack, Cheltenham won a free kick near the Billericay box. Captain Emily Owen stepped up, but the shot had to be retaken due to encroachment which earned the Ricay defender a booking. Owen's following effort fizzed wide past the post.

With Billericay's Breon Grant through on goal, Ffion Llewellyn had to get her challenge right and stopped the attack successfully.

Shortly after, the hosts then found themselves down to ten,

after Ylenia Priest was shown a second yellow card.

The Robynesses would take advantage of the extra player and would soon be on the scoreboard.

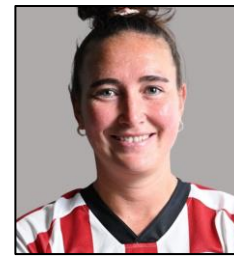
A Llewellyn free kick from deep saw Doris Greenwood and Liggett link up well, with Greenwood producing a strong save from Watson.

The former Robyness could only palm the ball across the face of goal, with Lue being the first to react, tapping home and shortening the gap.

With time running out, Cheltenham pushed hard to salvage a draw, but the efforts of the Billericay defence stopped them from producing any clear-cut chances, holding out to keep all three points at the New Lodge.



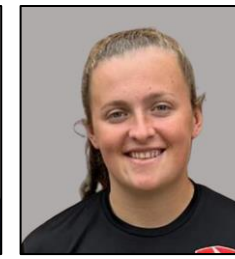
**CHELTEMPHAM TOWN  
WOMEN FC  
SQUAD 2024/25**



**EMILY OWEN**



**ELLA PEMBERTON**



**CONNIE PENGELLY**



**CARYS PUGH-JONES**



**MEG ATTENBOROUGH**



**LIBBY BELL**

Sponsored By:  
MORGAN & CARTER  
POWELL



**HENNA BUTCHER**



**MAISY COLLIS**

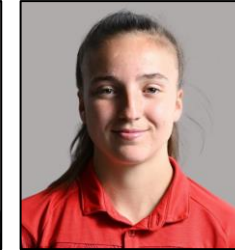


**MANFY SHARPE**

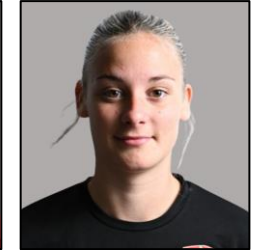
Sponsored By:  
CHUNKY CHOWN'S  
CHILDCARE



**MIA SMITH**

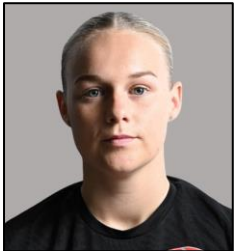


**ANAIS TRINCI**



**LILLY WELLESLEY-DAVIES**

Sponsored By:  
BLADES BIKES



**HOLLY FINCH**



**DORIS GREENWOOD**



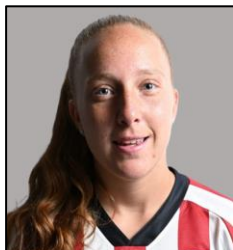
**ESME HARRIS**



**ABBEY HATELEY**



**JESSICA LEACH**

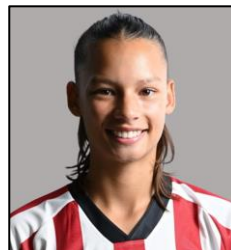


**LACY-JAI LIGGETT**



**FFION LLEWELLYN**

Sponsored By:  
SPLASH OUT  
BATHROOMS



**UNA LUE**

Sponsored By:  
270 CLIMBING

**Contact  
commercial@ctwomenfc.com  
to sponsor your favourite  
player today!**



# RESERVE TEAM

FA Women's National League Reserves Division South-West



DATE	OPPOSITION	COMP	SCORE	POM	
Sept 1	A	Moneyfields	FAWNL RC1	5-11	Norman
Sept 8	A	Swindon Town	FAWNL RD	0-3	Norman
<b>OCT 6</b>	<b>H</b>	<b>PORTSMOUTH</b>	<b>FA WNL RD</b>		
Oct 13	A	Moneyfields	FAWNL RD		
<b>OCT 20</b>	<b>H</b>	<b>KEYNSHAM TOWN</b>	<b>FA WNL RD</b>		
<b>OCT 27</b>	<b>H</b>	<b>MAIDENHEAD UNITED</b>	<b>FAWNL RP</b>		
Nov 3	A	AFC Bournemouth	FAWNL RD		
<b>NOV 10</b>	<b>H</b>	<b>EXETER CITY</b>	<b>FA WNL RD</b>		
Nov 17	A	Cheltenham Civil Service	GFA WT2		
<b>NOV 24</b>	<b>H</b>	<b>SWINDON TOWN</b>	<b>FA WNL RD</b>		
Dec 1	A	Keynsham Town	FAWNL RD		
<b>DEC 8</b>	<b>H</b>	<b>AFC BOURNEMOUTH</b>	<b>FA WNL RD</b>		
Dec 15	A	Exeter City	FAWNL RD		
<b>JAN 5</b>	<b>H</b>	<b>MONEYFIELDS</b>	<b>FA WNL RD</b>		
Jan 12	A	Portsmouth	FAWNL RD		

FA WNL RD: FA WNL Reserves Division.  
FAWNL RC: FA WNL Reserves Cup.  
FAWNL RP: FA WNL Reserves Plate  
GFAWT: GFA Women's Trophy.

POM: Player of the Match (Chosen by opposition).

CHELTENHAM TOWN WOMEN FC

# MAKE FOOTBALL EVERYONE'S GAME.



RAINBOW  
aces





# MARC PAYNE

PHOTOGRAPHY

I AM AN EXPERIENCED PHOTOGRAPHER BASED IN STROUD WITH OVER 5 YEARS EXPERIENCE CAPTURING A WIDE VARIETY OF PHOTOGRAPHY WITH A DIPLOMA IN PHOTOGRAPHY



## PORTRAITS, WEDDINGS & SPORTS

07300562066

[HTTPS://LINKTR.EE/MARCPAYNEPHOTOGRAPHER](https://linktr.ee/marcpaynephotographer)



## FIXTURES AND RESULTS

2024/25 Competitive Fixtures



DATE	OPPOSITION	COMP.	ATT.	POM
<b>AUG</b>				
SUN 18	H PLYMOUTH ARGYLE WOMEN	FAWNLSP	4-0	131 LIGGETT
Sun 25	A MK Dons Women	FAWNLSP	5-0	100 Attenborough
Thur 29	A Worcester City Women	WNLC DR	0-1	181 Owen
<b>SEPT</b>				
SUN 1	H AFC WIMBLEDON WOMEN	FAWNLSP	0-3	137 LUE
Sun 8	A Billericay Town Women	FAWNLSP	1-2	183 Attenborough
SUN 15	H HASHTAG UNITED WOMEN	FAWNLSP	14:00	
Sun 22	A Watford FC Women	FAWNLSP	14:00	
THUR 26	H GWALIA UNITED	FAWNLSP	19:45	
<b>OCT</b>				
Sun 6	A Oxford United Women	FAWNLSP	14:00	
SUN 13	H EXETER CITY WOMEN	FAWNLSP	14:00	
Sun 27	A Lewes FC Women	FAWNLSP	14:00	
<b>NOV</b>				
Sun 3	Adobe Women's FA Cup First Round			
SUN 10	H IPSWICH TOWN WOMEN	FAWNLSP	14:00	
Sun 17	A Plymouth Argyle Women	FAWNLSP	14:00	
<b>DEC</b>				
SUN 15	H MK DONS WOMEN	FAWNLSP	14:00	
<b>JAN</b>				
Sun 5	A AFC Wimbledon Women	FAWNLSP	14:00	
SUN 12	H BILLERICAY TOWN WOMEN	FAWNLSP	14:00	
Sun 19	A Bristol Rovers Women	GFA SWC	14:00	
<b>FEB</b>				
SUN 2	H OXFORD UNITED WOMEN	FAWNLSP	14:00	
Wed 12	A Gwalia United	FAWNLSP	19:45	
SUN 16	H PUCKLECHURCH WOMEN	GFA SWC	14:00	
SUN 23	H WATFORD FC WOMEN	FAWNLSP	14:00	
<b>MAR</b>				
Sun 9	A Hashtag United Women	FAWNLSP	14:00	
Sun 23	A Exeter City Women	FAWNLSP	14:00	
<b>APR</b>				
SUN 13	H LEWES FC WOMEN	FAWNLSP	14:00	
Sun 27	A Ipswich Town Women	FAWNLSP	14:00	

Fixture details subject to change.

POM: Player of the Match (as chosen by poll, match sponsor, or opposition where applicable).

FAWNLSP: FA Women's National League Southern Premier

WNLC / WNLP: FA Women's National League Cup/ Plate

AWFAC: Adobe Women's FA Cup

GFA SWC: Gloucestershire FA Senior Women's Cup



# TODAY'S TEAMS

## CHELTENHAM TOWN WFC

- 01 Mia Smith
- 02 Anais Trinci
- 03 Abbey Hateley
- 04 Holly Finch
- 05 Manfy Sharpe
- 06 Maisy Collis
- 07 Lacy-Jai Liggett
- 08 Megan Attenborough
- 09 Connie Pengelly
- 10 Libby Bell
- 11 Esme Harris
- 12 Henna Butcher
- 13 Ffion Llewellyn
- 14 Wellesley-Davies
- 15 Emily Owen (c)
- 16 Ella Pemberton
- 17 Doris Greenwood
- 19 Jessica Leach
- 21 Una Lue
- 30 Carys Pugh-Jones  
Lexie North

## HASHTAG UNITED WFC

- Frances Angel
- Malika Apindia
- Freda Ayisi
- Sophie Baigent
- Gemma Baker
- Kallie Balfour
- Louise Davis
- Francesca Finlayson
- Wiktoria Fronc
- Grace Gillard (c)
- Georgia Griffin
- Jade Keogh
- Courtney Lumley
- Macey Nicholls
- Samantha Rowland
- Emma Samways
- Kayleigh Stead
- Holly Turner
- Shauna Vassell
- Hayley West



@CTWomenFC

## TODAY'S MATCH OFFICIALS

### Referee:

Joshua East

### Assistant Referees:

Keith Simpson &  
Alex Shaw