



THE ROBIN'S REVIEW



Cheltenham Town Ladies FC vs Portsmouth Women
Sunday 9 April 2023
2:00pm Kick-off
FA Women's National League Southern Premier



ISSUE #10



FINANCIAL FITNESS GROUP

Proud Partners of
Gloucestershire's Largest Women's Football Club



CHELTEMHAM TOWN
LADIES FC

WE ARE WITHIN TOUCHING DISTANCE OF SECURING TIER THREE FOOTBALL NEXT SEASON AS WE CONTINUE TO BUILD. A POINT COULD BE ENOUGH, BUT OUR OPPONENTS PROBABLY WON'T BE FEELING TOO GENEROUS AS THEY CHASE PROMOTION.

CHAIRMAN

ANDY LIDDLE

Good afternoon and welcome to the Corinium Stadium for our second of three home fixtures on the bounce at the business end of the campaign.

It was absolutely fantastic to see the Lionesses pick up another trophy on Thursday, but even more so to see the 83,132 in attendance.

The Lionesses have already shown they can compete with the elite of women's football, but to see them have such a huge following can only be a positive for women's football here.

With last year's Euro final recording more than 87,000 and England's men's team getting 83,947 against Ukraine a couple of weeks ago, to see the women receive the same amount of backing will only help to develop the game at all levels as girls across the country will have bigger dreams of being sports professionals – and more chances than ever to achieve them!

We picked up a good point last week at home to Gillingham Women, and currently find ourselves in eighth in the table. We are within touching distance of securing Tier Three football next season as we continue to build. A point could be enough, but our opponents probably

won't be feeling too generous as they chase promotion.

With that, I offer a warm welcome to the players, staff, directors, and supporters of Portsmouth Women who have made the trip to Gloucestershire this afternoon. We hope you have an enjoyable time with us and a safe journey home afterwards too.

Only one home game left after this as we face Crawley Wasps next week. It would be great to have a bumper crowd for the final home game so bring a few friends along and show them what they're missing.

After that, we have a very long trip to current table-toppers, Ipswich Town on the final day. It'll be a tough challenge but one I'm sure we'll be more than up for.

Enjoy the game.

Andy Liddle,
Chairman



OUR YOUNG GROUP ARE LEARNING ON THE JOB AND FACING CHALLENGES THAT THEY HAVEN'T BEFORE, SO EACH EXPERIENCE WE COME THROUGH TOGETHER AND LEARN LESSONS FROM...

TOM DAVIES

Good afternoon and welcome back to Cirencester as we host Portsmouth Women in the FA Women's National League Southern Premier division.

Last week was an important step in the right direction following results and performances that we don't want to be defined by.

We always knew this season would throw up surprises and give us things to think about and this has been the case, Not only moving into a new tier but revamping the squad with a younger and different type of player pool which we believe will aid our progression in the long term.

Our young group are learning on the job and facing challenges that they haven't before, so each experience we come through together and learn lessons from, with reflections and accountability, allows us to grow and develop.

As we're closing out the season, the right things are happening both on the pitch and during training/ reflection sessions and we will continue to work through the areas we need to, allowing us to step on next season.

I'd like to extend a warm welcome to Portsmouth, Jay,

their staff, players, and their supporters to today's fixture.

In the previous fixture a month ago, we afforded Portsmouth too much respect and allowed them to play how they wanted, causing a fair result based on our performance.

Today provides us with the opportunity to put this right, take the game to Pompeii both in and out of possession which hopefully sets the scene for a fantastic afternoon of football with two sides looking to impose themselves on the game.

As always, thank you all for your support and I have you enjoy what should be a fantastic game.

Tom



Report by Kieran Neller.

Cheltenham Town Ladies walked away with a point against Gillingham Women in their FA WNL Southern Premier clash.

Cheltenham had lost 2-1 away to Gillingham only a month previously, amid a poor run of form, so a strong performance was important in the run-in to the end of the season.

Attacking from the off, Izzy Cook came close in the third minute with an effort at the near post. The chance was saved by Gillingham 'keeper Cara Davies.

Minutes later Laura Holden struck the post directly from a corner and forced a save with her second corner moments later.

Skipper Emily Owen came close just a couple of minutes later with a shot from the edge of the box. Owen caught the chance well, but the effort flew just past the top left corner.

Still applying pressure, Cheltenham would spurn several chances, with Holden and Henna Butcher seeing the better opportunities.

The closest chance of the

0 CHELTENHAM
0 GILLINGHAM



first half came in added time. Owen struck the upright with a volley from a corner. As play stopped for half time, Cheltenham were unfortunate to still be level.

Cheltenham looked to continue in the dominant fashion, as Tom Davies made no changes.

Cook threatened the Gillingham net within two minutes of the restart. The striker forced a save from Davies in Gillingham's goal.

Aimee Watson was called into action in the 70th minute. After a very quiet game for the Cheltenham shot stopper, Gillingham hit the post before regaining possession and threatening Cheltenham's net again. Watson made a stunning save, tipping the Gillingham chance onto the bar and out to maintain the side's clean sheet.

With just ten minutes to go, Cheltenham came the closest they had come to

scoring as Courtney Jones rattled the underside of the bar with her free kick. The chance bounced down into the box and out to safety.

The shot saw the end of a controlled performance from the home team, yet the side was unable to convert any of their abundance of chances.

Cheltenham: Watson, Jones, Finch, Owen, Ackerman (News 74), (Wathan 67), Buther, Holden (Congrave 74), C. Taylor, Haynes, Cook.

Gillingham: Davies, Pearch, Ashton-Jones (Espinosa 61), Priest, Maslak, Pepper, Jeffkins (Copsey 87), Keegan (Jestin 73, Flannery, Fordjour (Griffin 82), Grant

CHELTENHAM TOWN LADIES FC



2022/23 SQUAD & SPONSORS



DAISY ACKERMAN
AVAILABLE TO SPONSOR



HENNA BUTCHER
Sponsored by
MICHAEL BUTCHER



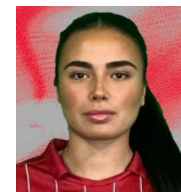
MAISY COLLIS
Sponsored by
COLOUR CONNECTIONS



EMMA CONGRAVE
Sponsored by
JON PALMER



IZZY COOK
Sponsored by
FINANCIAL FITNESS GROUP



ANNABEL DAVIES
AVAILABLE TO SPONSOR



LIBBY DAVIES
AVAILABLE TO SPONSOR



KELCIE FALLON
AVAILABLE TO SPONSOR



HOLLY FINCH
Sponsored by
CROSSFIT NAVALIA



SHAWNA HANNAM
AVAILABLE TO SPONSOR



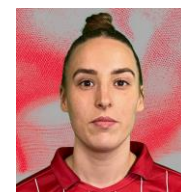
BILLIE HAYNES
AVAILABLE TO SPONSOR



LAURA HOLDEN
AVAILABLE TO SPONSOR



COURTNEY JONES
Sponsored by
JON PALMER



ISSY NEWS
Sponsored by
WILLIAMS AUTOMOBILES



EMILY OWEN
Sponsored by
MAX WILKINSON



CHARLIE TAYLOR
AVAILABLE TO SPONSOR



JESSIE TAYLOR
AVAILABLE TO SPONSOR



AMY WATHAN
AVAILABLE TO SPONSOR



AIMEE WATSON
Sponsored by
3D STRONG



TOM DAVIES
MANAGER
AVAILABLE TO SPONSOR



DAN LIDDIARD
ASSISTANT MANAGER
AVAILABLE TO SPONSOR



PETER MCKERNAN
HEAD OF MEDICAL
AVAILABLE TO SPONSOR

Youth Chairman Gary Goodhall Gary.goodhall@blueyonder.co.uk
 Secretary/Welfare Officer Guy Stirling Lee Guystirlinglee@gmail.com

U12 TORNADES CELEBRATE AS DIVISION 2 WINNERS!

Cheltenham Town U12 Tornadoes concluded their 2022/2023 season with a 2-0 win against Leckhampton at Swindon Village Park.

The Tornadoes were officially named league winners on 12 March but decided to celebrate the season in style on Sunday after their win.

Winger, Charlotte Thomson, reports on her team's season:

"We started the season with 2 losses, which wasn't ideal.

"But we worked hard in training and improved quickly. We bounced back with a convincing 11-1 win against Quedgeley and a 9-0 away win against Dursley, yet still trailed the top teams, who were winning most of their matches.

"An important match was our 3-0 home win over an in-form City of Gloucester Javelins team and then a last-minute winner from Marley away at City of Gloucester Hawks put us top of the table in November.

"Then, we had a tough away match against Lakeside which ended 1-1 with Bea getting the equalizer. Snowy conditions meant a few games were postponed



over winter and we were a bit nervous in our first match back but won a tough match 3-1 away at Brockworth.

"We won every game from then on to clinch the title! The league was tough. Yet, we persevered through the losses and finally made it to the top!

"This was the first time we have won a major trophy and we are head over heels that we are going to play the top teams in Gloucestershire next season."

Congratulations to the Tornadoes and their coaches on a great season!

Robin's Recall

A look back at Cheltenham Town Ladies through the years



BRISLINGTON LFC 2-1 CHELTENHAM TOWN LFC

Thursday March 22, 2018 | 19:30 | FAWPL Division One SW

Cheltenham Town Ladies ventured south to Bristol for a local derby against Brislington Ladies and came home with a point.

With a similar starting XI to the previous fixture, Cheltenham's only change was Louise Fensome replacing Lydia Amarquaye in the centre of midfield.

The game started tentatively as Brislington looked to use the wings to their advantage.

Their first chance asked questions of Bec Panniers in the Cheltenham goal, who did well to get a strong hand to a driven shot from distance.

Cheltenham began to ease their way into the game, as Sally Butterfield was presented the chance of the half to open the scoring.

Latching onto a piercing pass from Fensome, Butterfield couldn't convert under pressure when one-on-one with the Brislington goalkeeper.

The teams continued to exchange chances in an end-to-end affair, with Polly Wardle a particular threat for the home side.

The second half saw Cheltenham fly out of the gates, with Fensome, Kayleigh Hatley and Jen Brown-Wealls all influencing Cheltenham's play in midfield.

Substitute Ellie Briscoe began to force the issue for Cheltenham. After Hitchcox and Butterfield had saw chances come and go, Briscoe's pressing opened up an opportunity for the visitors.

Briscoe beat her marker to a wayward pass and

used her footwork to create a shooting opportunity but the shot whistled wide of the far post.

Cheltenham's final roll of the dice saw Annabel Davies, who replaced Jen Brown-Wealls, combined well with Briscoe to set up a chance for Hitchcox but the shot sailed over the crossbar.

Cheltenham: Panniers, Dance, Morris, Purvis, Berry, Fensome, Hatley, Brown-Wealls (Davies 70) Butterfield, Hitchcox (Rowlands 75), Kay (Briscoe 65).

Brislington (alphabetically): Coles, Gunter (Adams 46), Heal (Winnett 65), Jefferies, Jones Kirby (Vogt 46), Maggs, Osman, Powell, Wardle, Whelan

MAKE FOOTBALL EVERYONE'S GAME.

CHELTENHAM TOWN LFC



3DATE		OPPOSITION	COMP	POM
AUG				
SUN 21	H	PLYMOUTH ARGYLE WOMEN	FAWNLSP	3-1 BUTCHER
SUN 28	H	BILLERICAY TOWN WOMEN	FAWNLSP	2-1 NEWNS
Wed 31	A	MK Dons Women	FAWNLSP	1-2 Butcher
SEPT				
Sun 4	A	Oxford United Women	FAWNLSP	0-5 Liggett
Sun 18	A	Watford Women	FAWNLSP	0-6 C. Taylor
SUN 25	H	AFC WIMBLEDON WOMEN	WNLC DR	2-4 JONES
OCT				
Sun 2	A	London Bees	FAWNLSP	4-2 Cook
TUES 11	H	BRIDGWATER UNITED WOMEN	FAWNLSP	1-1 COOK
Sun 23	A	Crawley Wasps	FAWNLSP	1-0 Butcher
SUN 30	H	AFC ST. AUSTELL	WNLP1	9-1 OWEN
NOV				
Sun 13	A	Plymouth Argyle Women	WFAC 1	2-4
DEC				
Sun 4	A	Cambridge United Women	WNLP2	4-2 Nolan
SUN 18	H	IPSWICH WOMEN	FAWNLSP	0-2 NOLAN
JAN				
Sun 22	A	Crawley Wasps	WNLP3	2-2 Cook
Sun 29	A	Billericay Town Women	FAWNLSP	4-0 Watson
FEB				
SUN 5	H	OXFORD UNITED WOMEN	FAWNLSP	2-1 WATSON
SUN 12	H	WATFORD WOMEN	FAWNLSP	1-3 HOLDEN
Sun 19	A	Portsmouth Women	FAWNLSP	0-2 C. Taylor
THUR 23	H	MK DONS WOMEN	FAWNLSP	2-2 OWEN
Sun 26	A	Plymouth Argyle Women	FAWNLSP	1-4 Cook
MAR				
Sun 5	A	Gillingham Women	FAWNLSP	1-2 Cook
Thurs 16	A	Bridgwater United Women	FAWNLSP	3-3 Cook
SAT 18	H	LONDON BEES	FAWNLSP	0-1 COOK
APR				
SUN 2	H	GILLINGHAM WOMEN	FAWNLSP	0-0 WATSON
SUN 9	H	PORTSMOUTH WOMEN	FAWNLSP	14:00
SUN 16	H	CRAWLEY WASPS	FAWNLSP	14:00
Sun 30	A	Ipswich Women	FAWNLSP	14:00

Today's Teams



Cheltenham Town LFC

1. Aimee Watson (GK)
2. Courtney Jones
3. Daisy Ackerman
4. Holly Finch
5. Kelcie Fallon
7. Emma Congrave
8. Charlie Taylor
10. Amy Wathan
11. Laura Holden
12. Henna Butcher
13. Shawna Hannam (GK)
14. Izzy Cook
15. Emily Owen (c)
16. Billie Haynes
17. Annabel Davies
18. Maisy Collis
19. Jessie Taylor
20. Issy Newns
22. Libby Davies



Portsmouth WFC

1. Hannah Haughton (GK)
2. Nicole Barrett
4. Danielle Rowe (c)
5. Evie Gane
6. Jazz Younger
7. Tierney Scott
8. Ava Rowbotham
9. Emma Jones
10. Dani Lane
11. Mae Goulden
12. Sophie Quirk
13. Libby Kingshott (GK)
14. Annie Rolf
15. Jess Smith
16. Ella Humphrey
17. Anisha Hill
18. Leanne Bell
19. Mia Adaway
20. Ella Wild
21. Ali Hall
22. Anaisa Harney
23. Sammy Quayle
25. Izzy Collins
27. Taylor MacDonald

Today's Other Fixtures

Crawley Wasps vs
Oxford Utd
Gillingham vs London
Bees
MK Dons vs Plymouth
Argyle
Watford vs Bridgwater

Today's Match Officials

Referee

Harley Hetherington

Assistant Referees

Nathan Charles

&

Paul Sparrow

Next Home Game



Crawley Wasps Women

16 April, 2023
2:00pm kick-off
Corinium Stadium,
GL7 1H2



www.ctlfc.com

@CTLadiesFC

@CTLadies

@CheltenhamTownLFC



Main Club Sponsor



Shirt Sponsor



Women's National League