



# THE ROBIN'S REVIEW



**Cheltenham Town Ladies FC vs Watford Women**  
**Sunday 12 February 2023**  
**2:00pm Kick-off**  
**FA Women's National League Southern Premier**



**ISSUE**  
**#7**



# FINANCIAL FITNESS GROUP

## Proud Partners of

Gloucestershire's Largest Women's Football Club



CHELTEMHAM TOWN  
LADIES FC

***FOLLOWING DISCUSSIONS WITH THE MEN'S BOARD,  
LONDON BEES AND THE LEAGUE, WE ARE ABSOLUTELY  
DELIGHTED TO ANNOUNCE A DOUBLE HEADER AT THE  
COMPLETELY-SUZUKI STADIUM ON SATURDAY 18TH  
MARCH.***

CHAIRMAN

## ANDY LIDDLE

**Welcome to the Corinium Stadium again for our second home match of the new year, and back to back fixtures after what seems like away days forever.**

Just how good was last week's fixture?! The first time Oxford have conceded on the road and lost in the league this year.

Since 71 Twitter followers voted our win as the best performance in Women's football across the leagues, full credit to Tom, the backroom staff and of course most importantly... everyone who put a shift in across the 90 minutes.

We welcome the players, fans, and staff of Watford this afternoon, another side who have only recently been relegated from the ultra-competitive Championship, and who are looking to bounce back.

I had a great meeting with the Chair of our Youth section this week as we look to create much closer links and drive the player development pathway. I was also present at the Municipality Offices as the Council looks to build its sports infrastructure strategy... more

pitches please!

Following discussions with the Men's board, London Bees and the league, we are absolutely delighted to announce a double header at the Completely-Suzuki stadium on Saturday 18th March. The Men will play Exeter in League One at 3pm, followed by the Ladies playing London Bees at 6:30. Put it in your diary and watch us play in Cheltenham in front of what I am sure will be a record attendance.

A few player sponsorships remain and are available at half price now. Our marketing footprint continues to grow and if we can do anything to help promote your business – please do let us know at [chairman@ctlfc.com](mailto:chairman@ctlfc.com)

Enjoy the game and cheer on the girls!

**Andy Liddle,**  
Chairman



**WE KNOW WE HAVE A LOT OF WORK AHEAD OF US TO ACHIEVE THE LONG-TERM AMBITIONS WE HAVE, AND BUILDING CONSIST STRONG PERFORMANCES IS ONE OF THE MOST DIFFICULT ASPECTS TO COMPETITIVE SPORT**

# TOM DAVIES

**Good afternoon and welcome back to the Corinium Stadium as we host Watford FC in WNL Southern Premier Division.**

It's been pleasing to see the comments and messages that the players have received following our last two results, however the surprise is only for those outside of our circle. Everyone within the group knows the quality that we have and the connections that have and are continuing to build with each other, knowing it was a matter of time for us to start picking up positive results but more importantly positive connected performances.

This, however, is not the end for this group, nor are we getting carried away with the previous results. We know we have a lot of work ahead of us to achieve the long-term ambitions we have, and building consist strong performances is one of the most difficult aspects to competitive sport but one we continually work towards.

Taking a step back and looking at the journey we have been on, no-one would have predicted that Cheltenham and Watford would be playing each other in the

same division at the beginning of last season.

With the size and history of both clubs, this is something that everyone who has played their part in this journey should be proud of and hopefully in a couple seasons time we're able to draw new comparisons with other great clubs.

I'd like to welcome Watford, Damon and his staff, players, and their supporters to the today's fixture. Today provides another "free hit" for us to test ourselves against another of the league title chasers.

We'll approach it, how we have every game, giving them the respect, they deserve but making sure that we impose ourselves and leave everything we've got on the pitch.

Enjoy the game,

**Tom**



Report by Kieran Neller.

Cheltenham rocked the league leaders as goals from Issy Newns and Laura Holden broke Oxford's unbeaten streak.

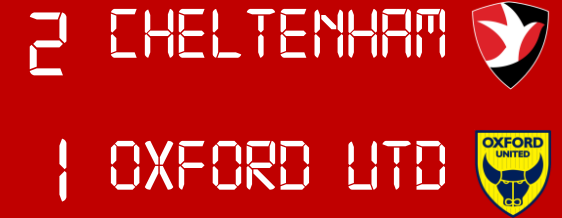
The Robinesses came into the game on the back of a brilliant performance against Billericay Town, winning 4-0. The side hadn't played at home in the Corinium since October.

In the tenth minute, Issy Newns broke the deadlock with a superb goal. The forward duck through the Oxford defence and beat the keeper with a looping shot inside the box. The goal marks the first time the visitors have conceded away from home in the league this season.

The league leaders tested Cheltenham's defensive resolve, but the home side held strong.

The closest Oxford came was striking the crossbar inside a congested box after a corner, but Cheltenham steered the ricochet to safety in the aftermath.

Laura Holden collected the ball on the break



and unleashed an effort from long range that stranded the keeper in no-man's land as the ball sailed over and into the net to put Cheltenham two goals ahead just before half time.

Watson is forced into action early in the second half. A powerful shot in the box is bound for goal, but the number one managed to tip the effort over the crossbar to safety.

Oxford halved their deficit with a half volley from Swaby. The goal saw Oxford's spirit's revitalised, but Cheltenham still had the advantage.

In the 70th minute, Oxford seemed certain they had scored. A shot from distance was cleared in front of the line, and Oxford took the ball to the halfway line, but the referee pulled the play

for a Cheltenham free-kick.

Courtney Jones put her body on the line with ten minutes to go, as she took a thunder shot to the face to protect Cheltenham's lead.

The final ten minutes were filled with Oxford pressure. The away team brought a centre-back up front and were pushing for any chance, but the Robinesses weren't giving them anything.

**Cheltenham:** Watson, Finch (Jones 68), Fallon, Owen, Collis (A. Davies 90+2), Holden (Wathan 61), Taylor, Nolan, Haynes, Cook (L. Davies 86), Newns (Congrave 76).

**Oxford:** Kite, Stevens, Casley, Gotch, Provan, Cole, Burridge, Johns, McLachlan (Stephens 75), Swaby (Goddard 82), King (Liggett 54).

# CHELTENHAM TOWN LADIES FC

## 2022/23 SQUAD & SPONSORS



**HENNA BUTCHER**  
Sponsored by  
**MICHAEL BUTCHER**



**MAISY COLLIS**  
AVAILABLE TO  
SPONSOR



**EMMA CONGRAVE**  
Sponsored by  
**JON PALMER**



**IZZY COOK**  
Sponsored by  
**FINANCIAL FITNESS  
GROUP**



**ANNABEL DAVIES**  
AVAILABLE TO  
SPONSOR



**LIBBY DAVIES**  
AVAILABLE TO  
SPONSOR



**KELCIE FALLON**  
AVAILABLE TO  
SPONSOR



**HOLLY FINCH**  
Sponsored by  
**CROSSFIT NAVALIA**



**SHAWNA HANNAM**  
AVAILABLE TO  
SPONSOR



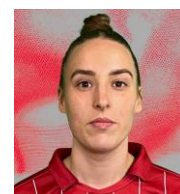
**BILLIE HAYNES**  
AVAILABLE TO  
SPONSOR



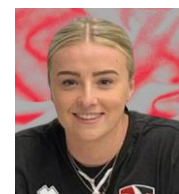
**LAURA HOLDEN**  
AVAILABLE TO  
SPONSOR



**COURTNEY JONES**  
Sponsored by  
**JON PALMER**



**ISSY NEWNS**  
AVAILABLE TO  
SPONSOR



**KYLIE NOLAN**  
AVAILABLE TO  
SPONSOR



**EMILY OWEN**  
Sponsored by  
**MAX WILKINSON**



**CHARLIE TAYLOR**  
AVAILABLE TO  
SPONSOR



**AMY WATHAN**  
AVAILABLE TO  
SPONSOR



**AIMEE WATSON**  
Sponsored by  
**3D STRONG**



**TOM DAVIES**  
**MANAGER**  
AVAILABLE TO  
SPONSOR



**DAN LIDDIARD**  
**ASSISTANT MANAGER**  
AVAILABLE TO  
SPONSOR



**PETER MCKERNAN**  
**HEAD OF MEDICAL**  
AVAILABLE TO  
SPONSOR

To become a sponsor, contact [chairman@ctlfc.com](mailto:chairman@ctlfc.com)

## Cheltenham Town Under 14s Spartans punched their ticket to the final of the Gloucestershire FA County Cup with a 2-1 win today over Brockworth Albion.

Manager, Chris Easey, described his team's performance towards the end of the match as 'gutsy' and 'composed'.

"We had a call that didn't go our way, resulting in us defending a free kick outside the box.

"But the girls stayed focused and did the necessary to preserve the lead. I couldn't be prouder of this team. They are where they deserve to be."

The Spartans will take on Downend Flyers in the final on 26 March.



# Robin's Recall

A look back at Cheltenham Town Ladies through the years



## CHELTENHAM TOWN LFC 1-0 FOREST GREEN LFC

Sunday November 19, 2017 | 14:00 | GFA Women's County Trophy

Cheltenham Town Ladies eliminated local rivals Forest Green in a well-deserved win in the Gloucestershire FA County Cup at the LCI Rail Stadium.

Ella Hitchcox scored a fantastic counter-attacking goal in the 16th minute, after Jade Wiltshire played a brilliant through ball splitting the defence.

The ball rebounded off the post, but Hitchcox managed to recover quick enough to produce a powerful shot.

It was a special day for Cheltenham goalkeeper Bec Panniers after receiving 'Player of the Match.' She was calm and confident between the sticks, producing some magnificent saves in the second half as the visitors searched for an equaliser.

The intensity was clear from the start as both teams tried to take control.

Cheltenham's Sam Morris and captain Jen Brown-Wealls worked well to keep Rovers chances to a minimum while the midfield produced some solid early chances before Hitchcox opened the scoring.

Cheltenham's play picked up after the goal, with some slick passing on display. Louise Fensome, a rock in the centre of the hosts' midfield, looked relaxed on the ball and produced some fantastic distribution to open up the Rovers' defence.

After conceding, The Girls In Green came out harder and swiftly took the game to Cheltenham, peppering the goal with quick shots.

Panniers was on fine form, pulling out a superb save from a looping shot from the edge of the box.

Brown-Wells was also incredibly solid in the centre of defence, stopping

balls being played into the Rovers forward line and making necessary tackles in the danger zone.

The visitors produced a scare for Cheltenham after striker Ashley Watson found enough space to rattle the crossbar but the home side remained in front at the half time break.

The half time break did nothing to dampen the intensity, with Forest Green forward line's lively play testing the Robinesses' defence.

A nasty injury to Rovers captain, Jess Phillips, who left the game on a stretcher, gave the sides a chance to catch their breath and compose themselves.

With the clock ticking down, Cheltenham managed to dig in deep, nulling the Forest Green threat and advancing to the next round.

# MAKE FOOTBALL EVERYONE'S GAME.

## CHELTENHAM TOWN LFC



3DATE		OPPOSITION	COMP		POM
<b>AUG</b>					
SUN 21	H	PLYMOUTH ARGYLE WOMEN	FAWNLSP	3-1	<b>BUTCHER</b>
SUN 28	H	BILLERICAY TOWN WOMEN	FAWNLSP	2-1	<b>NEWNS</b>
Wed 31	A	MK Dons Women	FAWNLSP	1-2	<i>Butcher</i>
<b>SEPT</b>					
Sun 4	A	Oxford United Women	FAWNLSP	0-5	<i>Liggett</i>
Sun 18	A	Watford Women	FAWNLSP	0-6	<i>Taylor</i>
SUN 25	H	AFC WIMBLEDON WOMEN	WNLC DR	2-4	<b>JONES</b>
<b>OCT</b>					
Sun 2	A	London Bees	FAWNLSP	4-2	<i>Cook</i>
TUES 11	H	BRIDGWATER UNITED WOMEN	FAWNLSP	1-1	<b>COOK</b>
Sun 23	A	Crawley Wasps	FAWNLSP	1-0	<i>Butcher</i>
SUN 30	H	AFC ST. AUSTELL	WNLP1	9-1	<b>OWEN</b>
<b>NOV</b>					
Sun 13	A	Plymouth Argyle Women	WFAC 1	2-4	
<b>DEC</b>					
Sun 4	A	Cambridge United Women	WNLP2	4-2	<i>Nolan</i>
SUN 18	H	IPSWICH WOMEN	FAWNLSP	0-2	<b>NOLAN</b>
<b>JAN</b>					
Sun 22	A	Crawley Wasps	WNLP3	2-2	<i>Cook</i>
Sun 29	A	Billericay Town Women	FAWNLSP	4-0	<i>Watson</i>
<b>FEB</b>					
SUN 5	H	OXFORD UNITED WOMEN	FAWNLSP	2-1	<b>WATSON</b>
SUN 12	H	WATFORD WOMEN	FAWNLSP	14:00	
Sun 19	A	Portsmouth Women	FAWNLSP	14:00	
THUR 23	H	MK DONS WOMEN	FAWNLSP	19:45	
Sun 26	A	Plymouth Argyle Women	FAWNLSP	14:00	
<b>MAR</b>					
Sun 5	A	Gillingham Women	FAWNLSP	14:30	
Thurs 16	A	Bridgwater United Women	FAWNLSP	19:45	
SAT 18	H	LONDON BEES (COMPLETELY-SUZUKI STADIUM)	FAWNLSP	18:30	
<b>APR</b>					
SUN 2	H	GILLINGHAM WOMEN	FAWNLSP	14:00	
SUN 9	H	PORTSMOUTH WOMEN	FAWNLSP	14:00	
SUN 16	H	CRAWLEY WASPS	FAWNLSP	14:00	
Sun 30	A	Ipswich Women	FAWNLSP	14:00	



# Today's Teams



## Cheltenham Town LFC

1. Aimee Watson (GK)
2. Courtney Jones
4. Holly Finch
5. Kelcie Fallon
7. Emma Congrave
8. Charlie Taylor
10. Amy Wathan
11. Laura Holden
12. Henna Butcher
13. Shawna Hannam (GK)
14. Izzy Cook
15. Emily Owen (c)
16. Billie Haynes
17. Annabel Davies
18. Maisy Collis
20. Issy Newns
21. Kylie Nolan
22. Libby Davies



## Watford WFC

1. Georgie Ferguson (GK)
2. Nicola Gibson
3. Emily Wallace
4. Ylenia Priest
5. Anne Meiwald
7. Annie Rossiter
8. Bianca Baptiste
9. Gemma Davison
10. Helen Ward
11. Adekita Fatuga-Dada
12. Ellie Heard
13. Jacqui Goldsmid (GK)
15. Andria Georgiou
16. Melis Mehmet
17. Megan Chandler
18. Poppy Wilson
19. Ali Murphy
21. Flo Fyfe
22. Jade Bradley
23. Kalani Peart
26. Faye Brough
27. Sophie McLean

## Today's Other Fixtures

Billericay Town vs  
Oxford Utd  
Bridgwater Utd vs  
Ipswich Town  
Crowley Wasps vs  
Plymouth Argyle  
London Bees vs  
Portsmouth  
MK Dons vs Gillingham

## Today's Match Officials

### Referee

Guy Thrower

### Assistant Referees

Aaron Baker

&

Sam Myatt

## Next Home Game



## Milton Keynes Dons Women

23 February, 2023

7:45pm kick-off

Corinium Stadium,  
GL7 1H2



www.ctlfc.com

@CTLadiesFC

@CTLadies

@CheltenhamTownLFC



Main Club Sponsor



Shirt Sponsor



Womens National League