



THE ROBIN'S REVIEW



Cheltenham Town Ladies FC vs Oxford United Women
Sunday 5 February 2023
2:00pm Kick-off
FA Women's National League Southern Premier



ISSUE
#6



FINANCIAL FITNESS GROUP

Proud Partners of
Gloucestershire's Largest Women's Football Club



CHELTEMHAM TOWN
LADIES FC

WE RETURNED TO WINNING WAYS WITH A TOP PERFORMANCE AT BILLERICAY LAST WEEKEND AND I AM SURE THIS AFTERNOON'S PERFORMANCE WILL CLEARLY DEMONSTRATE THE PROGRESS THAT IS BEING MADE WEEK ON WEEK.

CHAIRMAN

ANDY LIDDLE

Welcome to the Corinium Stadium for our first home game of the new year.

We were forced to switch the Ipswich fixture to Bristol given the snow, where a really good performance saw us go down 0:2 to much fancied Ipswich. Our first away game of 2023 saw us narrowly beaten by Crawley in the cup, who squeezed through on penalties after we had put the first four spot kicks away.

We returned to winning ways with a top performance at Billericay last weekend and I am sure this afternoon's performance will clearly demonstrate the progress that is being made week on week.

We welcome the players, fans, and staff of unbeaten Oxford United Women after the short trip along the A40 this afternoon. Two points clear at the top and with a game in hand at the halfway stage, Oxford have been the pace setters to date during the 2022/23 season, as they have every year since they were relegated from the Championship in 2017/18.

We've had a World Cup since we last played here at the end of October,

Jill Scott won I'm a Celebrity, Beth Mead won Sports Personality of the Year, and Christmas has come and gone. I hope you've stayed safe and warm, despite the cost of living crisis, and that you enjoy this afternoon's game.

A few player sponsorships remain and are available at half price now. Our marketing footprint continues to grow and if we can do anything to help promote your business – please do let us know at chairman@ctlfc.com

Enjoy the game and cheer on the girls!

Andy Liddle,
Chairman



AFTER A FRUSTRATING VISIT TO CRAWLEY WASPS IN THE WNL PLATE, IT WAS PLEASING TO SEE SUCH A DOMINANT AND MUCH NEEDED COMPLETE PERFORMANCE AGAINST A TOUGH BILLERICAY TOWN SIDE.

TOM DAVIES

Good afternoon and welcome to the Corinium Stadium as we host current league leaders Oxford United in WNL Southern Premier Division.

After a frustrating visit to Crawley Wasps in the WNL Plate, it was pleasing to see such a dominant and much needed complete performance against a tough Billericay Town side.

The players harnessed the disappointment of the Crawley result and performance, took ownership of their environment, and drove themselves through training and into a successful performance which earned us a fantastic result.

This is the type of team we're creating here where we all have our part to play, and we trust the process we're within. We now have three of the sides chasing promotion in the next three weeks which for us provides a great opportunity to test ourselves around the halfway mark of the season against the teams in the position which in the near future we wish to emulate.

They will all be the toughest tests to date; however, the group arrive at this junction with confidence and are beginning to settle as individuals and connect well as parts of units and a team. It's an exciting time and one we're looking forward to.

I'd like to extend a very warm welcome to Oxford United Women, Liam Gilbert and his backroom staff, players, and their supporters to the today's fixture.

Oxford punished us for our mistakes in the reverse fixture, something they've continued throughout the campaign thus far.

Today is a new challenge and we're excited to get going.

Enjoy the game,

Tom



Report by Kieran Neller.

Cheltenham Town's complete performance saw off Billericay Town and rounds off league double.

The Robinesses started aggressively, pinning the home side into their half.

A shot from Izzy Cook after 10 minutes was the first threat from Cheltenham. The attacker lobbed her marker, before bringing the ball onto her left foot and letting loose just wide of the target.

Billericay returned the shot, as Zoe Rushen's shot flew over from her free kick.

Libby Davies released a thumping effort on goal and struck a defender's arm. The referee pointed to the spot.

Skipper Emily Owen stepped up to take and placed the shot into the bottom corner with composure at the half hour mark.

Cook kept pushing for Cheltenham, as she fired two shots in quick succession into the



Billericay's shot-stopper Alex Baker.

The Robinesses broke through in the 52nd minute. The attack combined to pass effortlessly through the home side's defence. Cook released the shot, which the keeper saved, but the attacker volleyed home the rebound to put the visitors two goals ahead.

It only took five more minutes for Cheltenham to secure a third goal. Libby Davies lobbed the keeper from range in her first start for the side.

At the other end, Cheltenham number one Aimee Watson dealt with a series of awkward balls into the box.

Forward Emma Congrave affected the game immediately. She carried the ball deep into the box before striking low and

hard under the keeper and into the net to put the Robinesses four goals to the good.

In the dying moments of the game, Watson produced a moment of brilliance, flicking a ball around the post while unsighted to maintain the away side's clean sheet.

Cheltenham are back at home next weekend when they face league leaders Oxford United on Sunday, 5th February.

Billericay: Baker, Williams, Jeffkins, Lumley, Blackie, Iton (Rogers 73), Morton (O'Shea 58), Doo (Turner 60), Parker, Rushen, Sealey

Cheltenham: Watson, Jones, Fallon (Finch 64), Taylor, Holden (Newns 76), Cook, Owen, Haynes, Collis (A. Davies 67), Nolan, L. Davies (Congrave 72)

CHELTENHAM TOWN LADIES FC

2022/23 SQUAD & SPONSORS



HENNA BUTCHER
Sponsored by
MICHAEL BUTCHER



MAISY COLLIS
AVAILABLE TO
SPONSOR



EMMA CONGRAVE
Sponsored by
JON PALMER



IZZY COOK
Sponsored by
**FINANCIAL FITNESS
GROUP**



ANNABEL DAVIES
AVAILABLE TO
SPONSOR



LIBBY DAVIES
AVAILABLE TO
SPONSOR



KELCIE FALLON
AVAILABLE TO
SPONSOR



HOLLY FINCH
Sponsored by
CROSSFIT NAVALIA



SHAWNA HANNAM
AVAILABLE TO
SPONSOR



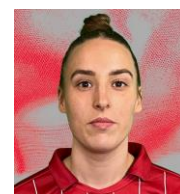
BILLIE HAYNES
AVAILABLE TO
SPONSOR



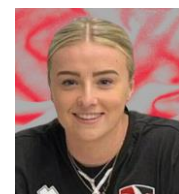
LAURA HOLDEN
AVAILABLE TO
SPONSOR



COURTNEY JONES
Sponsored by
JON PALMER



ISSY NEWNS
AVAILABLE TO
SPONSOR



KYLIE NOLAN
AVAILABLE TO
SPONSOR



EMILY OWEN
Sponsored by
MAX WILKINSON



CHARLIE TAYLOR
AVAILABLE TO
SPONSOR



AMY WATHAN
AVAILABLE TO
SPONSOR



AIMEE WATSON
Sponsored by
3D STRONG



TOM DAVIES
MANAGER
AVAILABLE TO
SPONSOR



DAN LIDDIARD
ASSISTANT MANAGER
AVAILABLE TO
SPONSOR



PETER MCKERNAN
HEAD OF MEDICAL
AVAILABLE TO
SPONSOR

To become a sponsor, contact chairman@ctlfc.com

Cheltenham Town U8s 4 Vs Bishops Cleeve Colts 3

After a late start to the season and a number of games called off due to weather, we had an opportunity to get our first win of the season against the team we played our first ever game against and previously lost 8-1.

We started the game brightly and with all the girls keeping positions well. In the 5th minute, player of the match, Lola passed the ball to Stephanie who scored the first goal of the match with a neat finish.

With the game end-to-end Bishops Cleeve equalised to make it 1-1.

The second quarter saw lots of really good battles and some great defending from both Besty and Lauren kept the scores level.

The 3rd quarter saw us take the lead again with Lola causing all sorts of problems for The Colts however in this



back-and-forth game Cleeve bounced straight back.

Heading into the final quarter, Lola put Cheltenham in front again with another long range effort.

With The Colts pressing forward, we were able to get a fourth on the brake with Lola grabbing a hat trick. Cleeve pulled another one back with just two minutes to go and it was all about trying to hold on for our first win. Scarlett, Alisha, Jaz and Iris all put a shift in in the midfield for the whole game to ensure we saw out the result.

Clive Gowing

Robin's Recall

A look back at Cheltenham Town Ladies through the years



LARKHALL ATHLETIC LFC 3-1 CHELTENHAM TOWN LFC

Sunday September 25, 2016 | 14:00 | FAWPL Division One SW

The first half of the FAWPL clash between Cheltenham Town Ladies and Larkhall Athletic Ladies saw an amazing defensive display by Cheltenham under constant pressure by Larkhall.

A goalkeeping master class from Bec Panniers saw her deny Larkhall the first score of the game on numerous occasions.

Larkhall took the lead just before half time, through a corner tapped in as Cheltenham failed to clear their lines.

Cheltenham's best attacks of the half came on the counter through Annie Martin and Chloe Lawrence, but the last ball was the team's Achilles heel for the

first 45.

The second half started in a similar style with Larkhall once again on the front foot, but Panniers' goalkeeping master class continued as she pulled off two more outstanding saves.

Shortly after, Cheltenham were once again punished for not clearing their lines as Larkhall doubled their lead shortly into the second half.

The game was all but gone minutes later as Larkhall converted a penalty and extended their lead to 3-0.

Cheltenham ended the match the better side. Chasing down defenders and causing issues at the back saw Ella Hitchcox pounce on

a goalkeeping error and slotted in a consolation goal for the home side.

Cheltenham continued the pressure for the final 10 minutes, creating two further chances only for the Larkhall keeper to deny any change to the score line.

Cheltenham: Panniers, Barker (Bingham 60), Brown-Wealls, Leask, Purvis, Lebbon, Fensome, Wyatt, Hitchcox, Lawrence, Martin,

Larkhall (alphabetically): Barrett, Blenkinsop, KA. German (O'Hara Nash), KR. German, Harrington (Hooper), Harris, O'Connell, Pearson, Perry, Scrivens, Sheppard

MAKE FOOTBALL EVERYONE'S GAME.

CHELTENHAM TOWN LFC



3DATE	OPPOSITION	COMP	POM
AUG			
SUN 21	H PLYMOUTH ARGYLE WOMEN	FAWNLSP	3-1 BUTCHER
SUN 28	H BILLERICAY TOWN WOMEN	FAWNLSP	2-1 NEWNS
Wed 31	A MK Dons Women	FAWNLSP	1-2 Butcher
SEPT			
Sun 4	A Oxford United Women	FAWNLSP	0-5 Liggett
Sun 18	A Watford Women	FAWNLSP	0-6 Taylor
SUN 25	H AFC WIMBLEDON WOMEN	WNLC DR	2-4 JONES
OCT			
Sun 2	A London Bees	FAWNLSP	4-2 Cook
TUES 11	H BRIDGWATER UNITED WOMEN	FAWNLSP	1-1 COOK
Sun 23	A Crawley Wasps	FAWNLSP	1-0 Butcher
SUN 30	H AFC ST. AUSTELL	WNLP1	9-1 OWEN
NOV			
Sun 13	A Plymouth Argyle Women	WFAC 1	2-4
DEC			
Sun 4	A Cambridge United Women	WNLP2	4-2 Nolan
SUN 18	H IPSWICH WOMEN	FAWNLSP	0-2 NOLAN
JAN			
Sun 22	A Crawley Wasps	WNLP3	2-2 Cook
Sun 29	A Billericay Town Women	FAWNLSP	4-0 Watson
FEB			
SUN 5	H OXFORD UNITED WOMEN	FAWNLSP	14:00
SUN 12	H WATFORD WOMEN	FAWNLSP	14:00
Sun 19	A Portsmouth Women	FAWNLSP	14:00
THUR 23	H MK DONS WOMEN	FAWNLSP	19:45
Sun 26	A Plymouth Argyle Women	FAWNLSP	14:00
MAR			
Sun 5	A Gillingham Women	FAWNLSP	14:30
Thurs 16	A Bridgwater United Women	FAWNLSP	19:45
SUN 19	H LONDON BEES	FAWNLSP	14:00
APR			
SUN 2	H GILLINGHAM WOMEN	FAWNLSP	14:00
SUN 9	H PORTSMOUTH WOMEN	FAWNLSP	14:00
SUN 16	H CRAWLEY WASPS	FAWNLSP	14:00
Sun 30	A Ipswich Women	FAWNLSP	14:00

Today's Teams



Cheltenham Town LFC

1. Aimee Watson (GK)
2. Courtney Jones
4. Holly Finch
5. Kelcie Fallon
7. Emma Congrave
8. Charlie Taylor
10. Amy Wathan
11. Laura Holden
12. Henna Butcher
13. Shawna Hannam (GK)
14. Izzy Cook
15. Emily Owen (c)
16. Billie Haynes
17. Annabel Davies
18. Maisy Collis
20. Issy News
21. Kylie Nolan
22. Libby Davies



Oxford United WFC

1. Paula Sercombe (GK)
2. Billie French
3. Shelly Provan
4. Lauren Haynes
5. Cat Beaver
6. Riva Casley
7. Daisy McLachlan
8. Lily Stevens
9. Carly Johns
10. Naomi Cole
11. Sophie Baker
12. Erin Hartigan
13. Lacy-Jai Liggett
14. Jess Gray
16. Jaime Gotch
17. Sarah King
18. Taome Oliver
19. Leah Burrige
20. Lois Joslyn
21. Sammy Wynne
22. Georgia Hayes
26. Hannah MacKenzie
27. Rose Kite (GK)
30. Tash Stephens
32. Libby Gilmore
37. Oana Negrea
38. Iesha Swaby

Today's Other Fixtures

Bridgwater Utd vs
Crawley Wasps
London Bee vs
Plymouth Argyle
MK Dons vs Billerica
Town
Watford vs Ipswich
Town
Gillingham vs
Portsmouth

Today's Match Officials

Referee

Daniel Forrester

Assistant Referees

James McNeel

&

Max Thompson

Next Home Game



Watford Women

12 February, 2023
2pm kick-off
Corinium Stadium,
GL7 1H2



www.ctlfc.com

@CTLadiesFC

@CTLadies

@CheltenhamTownLFC



Main Club Sponsor



Shirt Sponsor



Womens's National League