



THE ROBIN'S REVIEW



Cheltenham Town Ladies FC vs Bridgwater United Women
Tuesday 11 October 2022
7:45pm Kick-off
FA Women's National League Southern Premier



ISSUE
#4



**FINANCIAL
FITNESS GROUP**

Proud Partners of
Gloucestershire's Largest Women's Football Club



CHELTEMHAM TOWN
LADIES FC

**HALF A DOZEN GAMES INTO A PROMOTION
SEASON AND I COULDN'T BE MORE PLEASED WITH
THE WAY THE SEASON HAS STARTED.**

CHAIRMAN

ANDY LIDDLE

Welcome back to the Corinium Stadium for what promises to be a cracking match under the lights. It is 6th v 7th in the FA Women's National League Southern Premier Division.

After a tough first 45 minutes away at London Bees last weekend, we played some amazing football in the second half, rattling in three good goals to walk away with the points and tonight will be another great test.

Tonight, we welcome the players, staff, and fans of Bridgwater United who make the short journey up the M5 for our first evening fixture at home this season, and the first fixture between the two sides. The history books do not throw up a previous encounter in any competition.

Half a dozen games into a promotion season and I couldn't be more pleased with the way the season has started. Nine points from 18 is testament to the hard work Tom, his staff, and all the Ladies have put in to come together so quickly... and of course, we were robbed at Milton Keynes with two clear goals chalked off for alleged

offside (we've checked the video footage - and both were well onside!), so things could, and should, be even better.

Midweek games always tend to be fun and competitive, so enjoy the game, and do try and get along to the Corinium Stadium on Sunday 6th November for the visits of Ipswich Town and 18th December for Portsmouth Women.

Also, with a few cup game draws - the FA WNL Plate Competition and Women's FA Cup - on the horizon, keep an eye on www.ctlfc.com and the club's social media, as there are more games to come!

Thank you all for your support

Andy Liddle,
Chairman



**THIS IS THE STARTING POINT FOR OUR SEASON
AHEAD, AS WE CONTINUE TO IMPROVE BY
CONNECTING OUR NEW GROUP TOGETHER, DAY BY
DAY, GAME BY GAME.**

DAN LIDDIARD

Assistant manager takes over the notes

Good evening and welcome to the Corinium Stadium for our first game under the lights at home this season.

Following last week's victory vs London Bees we're looking to build on that performance tonight against a strong Bridgwater side. Having not had a competitive game this past weekend it was an opportunity to reflect on the season so far and take stock as a group. We've learnt valuable lessons already this season and have used them as additional motivation for growth moving forward with plenty more exciting chapters of our season to go.

We've enjoyed the challenges that promotion has thrown at us this far and with the squad now firmly settled into the campaign we're looking forward to pushing on with our journey in Tier Three. I'm delighted for both Kylie Nolan and Henna Butcher on getting their first goals since joining the club last weekend as a reward for the hard work that they, along with the rest

of the squad, have put in. However, this is the starting point for our season ahead, as we continue to improve by connecting our new group together, day by day, game by game.

Tonight, we're hoping to bring you an exciting game and play some entertaining football to warm you up on a chilly October evening.

Talking of warmth, I'd like to extend a warm welcome to Bridgwater United Women and their staff, players, and supporters to Gloucestershire this evening.

Tonight's fixture has all the makings to be a fantastic occasion, with so many talented players on show from both sides.

Enjoy the game,

Dan,



Report by Kieran Neller.

Cheltenham Town Ladies fell to AFC Wimbledon in the FA Women's National League Cup Determining Round.



Cheltenham were on the back foot immediately, conceding an early chance to AFC Wimbledon's Ellie Dorey from a long-range strike.

Minutes later, Shawna Hannam made a reaction save to keep the home side in the game.

Cheltenham's Emma Congrave levelled the scoring, after a pinpoint Izzy Cook cross finds the attacker who controlled well under pressure and powered the shot into the top netting.

The goal only kept the game level for three minutes as Wimbledon striker Ashlee Hincks returned the visitors to the lead.

Cook began a barrage of chances for Cheltenham, firing a left footed shot from outside the box which drew a great save from Dons keeper Lauren Allen.

2 CHELTENHAM 
4 WIMBLEDON 

A second shot from Cook just minutes later flew narrowly wide, before a third was saved by Allen at full extension to round out the half.

The Robinesses started the second half with intensity. A period of pressure and asking questions of the visitor's goal area finished with a high shot from Issy Newns.

The fast start ended with a goal for Wimbledon, as Hincks had a shot deflected past the Hannam at the near post.

The Dons kept pushing the hosts and eventually it paid off as they were awarded a penalty, with Hincks tucking the spot kick away to seal her hat-trick.

Cheltenham responded strongly, with Charlie Taylor almost taking the Wimbledon 'keeper by

surprise, as a hard shot was stopped but spilled on the line. Allen collected quickly with red shirts rushing in to pounce.

A fantastic strike from Maisy Collis saw the ball dip under a stretching Allen to reduce the deficit as the clock hit 84 minutes but Cheltenham were unable to close the gap.

Cheltenham: Hannam, Jones, Barbour-Gresham, Finch (Fallon 55), Asker (Nolan 64), Taylor, Cook (Butcher 64), Collis, Beck-Esson, Newns (Wathan 75), Congrave.

Wimbledon: Allen, Brooks, Highman, Billingham, Sampson, Mann (Oliver 64), Donovan, Bath, Dorey (Russell 86), Hincks, Lockett (Gardner 70).

CHELTENHAM TOWN LADIES FC

2022/23 SQUAD & SPONSORS



TIA ASKER
AVAILABLE TO SPONSOR



GEORGIE-MARIE BARBOUR-GRESHAM
AVAILABLE TO SPONSOR



HOLLY BECK-ESSON
AVAILABLE TO SPONSOR



HENNA BUTCHER
Sponsored by
MICHAEL BUTCHER



MAISY COLLIS
AVAILABLE TO SPONSOR



EMMA CONGRAVE
AVAILABLE TO SPONSOR



IZZY COOK
Sponsored by
FINANCIAL FITNESS GROUP



KELCIE FALLON
AVAILABLE TO SPONSOR



HOLLY FINCH
Sponsored by
CROSSFIT NAVALIA



JADE GROVE
AVAILABLE TO SPONSOR



SHAWNA HANNAM
AVAILABLE TO SPONSOR



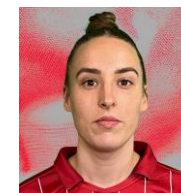
BILLIE HAYNES
AVAILABLE TO SPONSOR



COURTNEY JONES
Sponsored by
JON PALMER



LACY-JAI LIGGETT
Sponsored by
JON PALMER



ISSY NEWS
AVAILABLE TO SPONSOR



KYLIE NOLAN
AVAILABLE TO SPONSOR



EMILY OWEN
Sponsored by
MAX WILKINSON



CHARLIE TAYLOR
AVAILABLE TO SPONSOR



AMY WATHAN
AVAILABLE TO SPONSOR



AIMEE WATSON
Sponsored by
3D STRONG



TOM DAVIES
MANAGER
AVAILABLE TO SPONSOR



DAN LIDDIARD
ASSISTANT MANAGER
AVAILABLE TO SPONSOR



PETER MCKERNAN
HEAD OF MEDICAL
AVAILABLE TO SPONSOR

To become a sponsor, contact chairman@ctlfcc.com

Cheltenham Town U10s 3 Vs Gotherington Juniors 1

How did the game go?

The game started off really well, then we started to find it a bit challenging as the other team wanted to score and equalize. However, we gave it everything and then came back out on top.

When Olivia scored our first goal near the start of the match the whole team was so happy. After that our opponent caught us up, so this kept us on our toes all the time. However, Olivia scored two further goals, the team got behind her and we were all so excited to win! Our defence and goalkeeping was strong.

How did the team play?

Our team was strong from the beginning but did find that, as Gotherington scored, we had to play even better to win. Everyone played their best and supported each other. This really helped us to win. We play as a team, looking out for everyone.



What did you enjoy the most?

I enjoyed defending and seeing Olivia score a hat trick! The game was quite fast paced which made it more exciting.

What would you change for the next game?

I don't know what we would change for next time as we played so well, but we can always improve. If we tackled sooner to stop our opponent's possession of the ball, I think that would give us even more of a chance to stop their goal and increase ours!

By Lauren

Robin's Recall

A look back at Cheltenham Town Ladies through the years



SAINT NICHOLAS LFC 0-3 CHELTENHAM TOWN LFC

Thursday October 12, 2017 | 19:45 | FAWPL Division One SW

Cheltenham Town Ladies travelled to face St Nicholas Ladies and came away with all the points in a game which saw the side produce a shining performance, 17 year old Caty Stirling-Lee earn a WPL debut and a very dramatic finish.

Caretaker boss, Andy Liddle made few changes to the team last time out but switched Sarah Walters to centre back, Ella Hitchcox wide left and Sally Butterfield to lone striker in a 4-5-1 formation.

Cheltenham quickly settled into their passing game, but it was Bec Panniers who was called into action first making a good stop. However, after a handball on the St Nicks goal line skipper Jen Brown-Wealls despatched her penalty to put the side 1-0 up.

The confidence that had been missing in previous games came flooding back, and the Robinesses produced some slick passing moves and doubled their lead in the 33rd minute when Louise Fensome put the ball into an empty net.

Despite some dangerous St Nicks counterattacks, the Cheltenham back four were resolute, holding onto their 2 goal lead.

Holly Kay replaced an injured Ria Salleh at the break, but this did not affect the pattern of play with Hitchcox, Butterfield, and Kayleigh Hateley all spurning good chances.

Cheltenham were now playing with good confidence and the passing and movement was the best seen this season.

Louise Fensome sealed

the victory with a 20 yard screamer, picking up a loose ball and sending a tremendous shot into the top right corner.

Stirling-Lee replaced Panniers on 85 minutes, but her debut was cut short when with three minutes remaining as the referee had to end the match due to a fire started by a floodlight failure.

Cheltenham: Panniers (Stirling Lee 85), Bull, Purvis, Walters, Wiltshire, Hitchcox, Hatley (Morris 75), Fensome, Brown-Wealls, Salleh (Kay 46), Butterfield

St Nicks

(alphabetically): Baber, Bourne-Hallet, Churchill, Galpin (Shiner 70), Morgan, Prior, Rendall, Robbins, Smith (Coles 76), Sweet, Werrett

MAKE FOOTBALL EVERYONE'S GAME.

CHELTENHAM TOWN LFC



DATE	OPPOSITION	COMP	POM
AUG			
SUN 21	H PLYMOUTH ARGYLE WOMEN	FAWNLSP	3-1 BUTCHER
SUN 28	H BILLERICAY TOWN WOMEN	FAWNLSP	2-1 NEWNS
Wed 31	A MK Dons Women	FAWNLSP	1-2 Butcher
SEPT			
Sun 4	A Oxford United Women	FAWNLSP	0-5 Liggett
Sun 18	A Watford Women	FAWNLSP	0-6 Taylor
SUN 25	H AFC WIMBLEDON WOMEN	WNLC DR	2-4 JONES
OCT			
Sun 2	A London Bees	FAWNLSP	4-2 Cook
TUES 11	H BRIDGWATER UNITED WOMEN	FAWNLSP	19:45
Sun 23	A Crawley Wasps	FAWNLSP	14:00
NOV			
SUN 6	H IPSWICH WOMEN	FAWNLSP	14:00
DEC			
Sun 11	A Gillingham Women	FAWNLSP	14:00
SUN 18	H PORTSMOUTH WOMEN	FAWNLSP	14:00
JAN			
Sun 8	A Plymouth Argyle Women	FAWNLSP	14:00
Sun 29	A Billericay Town Women	FAWNLSP	14:00
FEB			
SUN 5	H OXFORD UNITED WOMEN	FAWNLSP	14:00
SUN 12	H WATFORD WOMEN	FAWNLSP	14:00
W/C 20	H MK DONS WOMEN	FAWNLSP	TBC
MAR			
Sun 5	A Portsmouth Women	FAWNLSP	14:00
W/c 13	A Bridgwater United Women	FAWNLSP	Tbc
SUN 19	H LONDON BEES	FAWNLSP	14:00
APR			
SUN 2	H GILLINGHAM WOMEN	FAWNLSP	14:00
SUN 16	H CRAWLEY WASPS	FAWNLSP	14:00
Sun 30	A Ipswich Women	FAWNLSP	14:00



Today's Teams



Cheltenham Town LFC

1. Aimee Watson (GK)
2. Courtney Jones
4. Holly Finch
5. Kelcie Fallon
6. Georgie-Marie Barbour-Gresham
7. Emma Congrave
8. Charlie Taylor
9. Jade Grove
10. Amy Wathan
11. Lacy-Jai Liggett
12. Henna Butcher
13. Shawna Hannam (GK)
14. Izzy Cook
15. Emily Owen (c)
16. Billie Haynes
17. Tia Asker
18. Maisy Collis
19. Holly Beck-Esson
20. Issy Newns
21. Kylie Nolan



Bridgwater United WFC

- Daisy Ackerman
Keeley Banfield
Fiona Barry
Faith Bedford
Charlotte Buxton
Holly Chandler
Georgia Evans
Taylor Ford
Katie Garratt
Elizabeth Gimson
Amy Goddard
Jennie Habbits
Laura Holden
Bethany Howard (GK)
Maya Kendell
Ffion Llewellyn
Ellie Mitchell
Niamh Nicholls
Gracie Owen
Nicky Potts
Ellie Sara
Daniella Tyson
Aileen Williams
Emily Wilson-White

This Week's Fixtures

This Evening
Crawley Wasps vs
Watford

Tomorrow
Billericay vs Gillingham

Today's Match Officials

Referee
Richard Swaine

Assistant Referees
Max Thompson
&
Andrew Wertheim

Next Home Game



Ipswich Town Women

11 November, 2022
2pm kick-off
Corinium Stadium,
GL7 1H2



www.ctlfc.com

@CTLadiesFC

@CTLadies

@CheltenhamTownLFC



Main Club Sponsor



Shirt Sponsor



Womens National League