



THE ROBIN'S REVIEW



Cheltenham Town Ladies FC vs AFC Wimbledon Women
Sunday 25 September 2022
2:00pm Kick-off
FA Women's National League Cup Determining Round



ISSUE
#3



FINANCIAL FITNESS GROUP

Proud Partners of
Gloucestershire's Largest Women's Football Club



CHELTEMHAM TOWN
LADIES FC

WE'VE ANNOUNCED THE CREATION OF A NEW WOMEN'S U19 DEVELOPMENT TEAM, PROVIDING THE OPPORTUNITY TO PLAY ALONGSIDE STUDYING AND I'M SURE IT WON'T BE LONG BEFORE DEVELOPMENT PLAYERS ARE PUSHING FIRST TEAMERS FOR POSITIONS.

CHAIRMAN

ANDY LIDDLE

I am absolutely delighted to welcome the players, staff, and fans of AFC Wimbledon to the Corinium Stadium today for the Determining Round of the FA WNL League Cup.

We haven't played Wimbledon before in any competition, and I'm looking forward to the game hugely. They are the only team to take points off of the much fancied Hashtag United in the FA WNL Division One South-East, so I'm sure it will be a competitive game.

It's been a busy period for the Club, with Sunday and midweek fixtures. New Secretary Sammy Hallsworth is doing a fabulous job settling in with all the admin, and it's nice to have someone else on my case other than Tom (all the time!)

Our new away kit arrived in time for Watford last week, thanks to our kit sponsor www.mirashowers.co.uk, and we were once again driven by our transport partners www.marchants-coaches.com.

Our various youth age groups also kicked off their campaigns, it really is great to see so many young girls involved in the sport. We've also announced the creation of a new Women's U19 Development team,

providing the opportunity to play alongside studying and I'm sure it won't be long before Development players are pushing First Teamers for positions.

Some player sponsorships remain available, take a look at the centre pages, and see if your favourite is available – then get in touch via email: chairman@ctlfc.com.

Finally, it's great to have some VIPs with us today, as we're joined by the girls from Chipping Campden Brownies. The girls were hooked on football during the Euros in the summer, and now want to enjoy a live game – and some will even be mascots today and walk out onto the pitch with the players! We hope you all have a fantastic day with us and thoroughly enjoy yourselves!

Thank you all once again for your fantastic support. Enjoy the game.

Andy Liddle,
Chairman



WE CONTINUE TO BUILD, WORKING THROUGH THE MOMENTS OF THE GAME STEP BY STEP ENSURING THAT AS COACHES AND PLAYERS WE FULLY UNDERSTAND WHAT'S EXPECTED OF US IN EACH MOMENT...

TOM DAVIES

Good afternoon and welcome back as we take a short break from league proceedings and enter the FAWNL League Cup/Plate.

After two home wins, we return today following three defeats on the road. Our performances against MK Dons and Oxford were improvements on the first two fixtures which is the most pleasing part about our progression so far.

We went to three established sides in this division and played the football in a way that took bravery and heart, learning valuable lessons for the season ahead.

We continue to build, working through the moments of the game step by step ensuring that as coaches and players we fully understand what's expected of us in each moment, this alongside developing the humanistic connections takes time and I'm not expecting a "complete" performance for a while yet. However, what the players and staff have done so far with their commitment to

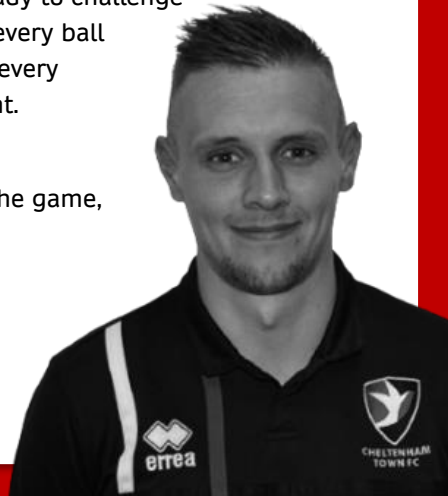
the project and our improvements across the board is something that I'm extremely proud to be a part of. We have a plan; we will stick to this, and we will reap the rewards in the future.

With my reflections of the past few weeks complete, I'd like to extend a warm welcome to those who made the trip from London today: Kevin Foster and his staff, players, and all AFC Wimbledon supporters to the Corinium Stadium this afternoon.

Wimbledon have recruited well after a strong season last year and will head into today's game full of confidence and ready to challenge us for every ball and in every moment.

Enjoy the game,

Tom



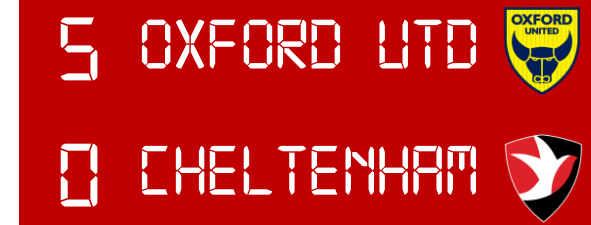
Report by Kieran Neller.

Cheltenham's second match on the road saw the league leaders continue their strong winning run, as the Robinesses were brushed aside, leaving them in the middle of the National League Southern Division table.

After a bright start, Oxford grabbed their first goal in the 14th minute as Leah Burridge fired her shot high into the net from just inside the box, before doubling the side's lead with a header seven minutes later.

The league leaders added a third goal just minutes later with a header from Riva Casley, with the lively Carly Johns rounding off the first half scoring with a chip in the 32nd minute.

Cheltenham collected themselves and responded with a strong effort before the break



as Jade Grove rattled the crossbar with a scorching strike from distance.

With Cheltenham fighting back into the game, a Billie Haynes shot from the wing narrowly missed the top corner, reminding Oxford they weren't going to have it all their own way.

At the end of the half, Cheltenham had a ball bouncing on Oxford's goal line, but the defence recovered to clear the ball and the officials deemed it did not cross the whitewash.

Cheltenham grew in confidence following the half time team talk, and it was Emily Owen's turn to hit the woodwork as keeper Rose Kite tipped her shot onto the

crossbar.

Johns rounded off Oxford's scoring in the 65th minute with a run from deep.

With the clock ticking down to Full Time, Burridge was in the thick of it again, forcing a superb double save from Aimee Watson at the death.

Oxford United: Kite, Provan, Haynes, Casley, McLachlan, Stevens, Johns (Gray 81), Cole (Wynne 86), Gotch, King (Hartigan 68), Burridge (Joslyn 81).

Cheltenham: Watson, Jones (Newns 74), Owen, Finch (Taylor 63), Beck-Esson (Asker 63), Collis, Liggett, Butcher, Haynes, Grove (Congrave 74), Wathan.

CHELTENHAM TOWN LADIES FC

2022/23 SQUAD & SPONSORS



TIA ASKER
AVAILABLE TO SPONSOR



GEORGIE-MARIE BARBOUR-GRESHAM
AVAILABLE TO SPONSOR



HOLLY BECK-ESSON
AVAILABLE TO SPONSOR



HENNA BUTCHER
Sponsored by
MICHAEL BUTCHER



MAISY COLLIS
AVAILABLE TO SPONSOR



EMMA CONGRAVE
AVAILABLE TO SPONSOR



IZZY COOK
Sponsored by
FINANCIAL FITNESS GROUP



KELCIE FALLON
AVAILABLE TO SPONSOR



HOLLY FINCH
Sponsored by
CROSSFIT NAVALIA



JADE GROVE
AVAILABLE TO SPONSOR



SHAWNA HANNAM
AVAILABLE TO SPONSOR



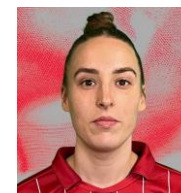
BILLIE HAYNES
AVAILABLE TO SPONSOR



COURTNEY JONES
Sponsored by
JON PALMER



LACY-JAI LIGGETT
Sponsored by
JON PALMER



ISSY NEWNS
AVAILABLE TO SPONSOR



KYLIE NOLAN
AVAILABLE TO SPONSOR



EMILY OWEN
Sponsored by
MAX WILKINSON



CHARLIE TAYLOR
AVAILABLE TO SPONSOR



AMY WATHAN
AVAILABLE TO SPONSOR



AIMEE WATSON
AVAILABLE TO SPONSOR



TOM DAVIES
MANAGER
AVAILABLE TO SPONSOR



DAN LIDDIARD
ASSISTANT MANAGER
AVAILABLE TO SPONSOR



KATY JACKSON
SPORTS THERAPIST
AVAILABLE TO SPONSOR

To become a sponsor, contact chairman@ctlfcc.com

WWW.CTLADIESYOUTH.CO.UK

Youth Chairman Gary Goodhall Gary.goodhall@blueyonder.co.uk

Secretary/Welfare Officer Guy Stirling Lee Guystirlinglee@gmail.com

Rain in the air, new kits, debut's, a visit to A&E, wins and losses, the football season was back last weekend for the Cheltenham Town Ladies Youth Teams!

The U12 Tornados, U12 Vipers, U13 Tigers, U15 Titans and the U18 all kicked off their season with mixed fortunes but with one common theme; *it's good to be back.*

After a summer of fun supporting the Lionesses, various team building activities, and summer tournaments, everyone was ready for the season ahead and looking forward to the ups and downs that the players, parents, and coaches will face each week.

The British weather also decided to make an appearance, bringing rain to the opening weekend of the youth season, and we wouldn't have it any other way!

Some of the other age groups will have to wait another week or two to kick off their season but friendlies took the



place of a competitive league fixture and plenty of excitement was in the air.

Girl's football has grown massively over the last 4-5 years within Gloucestershire with the number of girls playing competitive football having doubled in size to over 1200 girls registered, 102 teams across the various age groups and 25 different clubs all playing their part. Long may it continue!

Clive Gowing
Cheltenham Town Ladies FC Youth

Robin's Recall

A look back at Cheltenham Town Ladies through the years



The FA Women's
National League
League Plate

CHELTENHAM TOWN LFC 1-2 WEST HAM UTD WFC

Sunday October 26, 2016 | 14:00 | FAWPL League Plate

In what is arguably the biggest women's match to ever take place at The Big Local Stadium, Cheltenham pushed West Ham United Women all the way in the League Plate.

Cheltenham forced West Ham mistakes early, before sending dangerous balls into the visitor's box but were unable to find the back of the net.

The tide would eventually turn as West Ham fashioned a breakaway attack and caused problems for the home defence with their pace. This eventually paid off and the Hammers took the lead through Katie Bottom who scored from the penalty spot after being brought down in the area.

Buoyed by their goal,

West Ham turned the screw with a series of attacks, being kept at bay by a well drilled defence.

Despite their attacking play, the visitors wouldn't get everything their own way and would be forced to go in with just a single goal at the break.

Cheltenham shot out of the blocks at the start of the second half, hunting down an equaliser.

With Cheltenham posing a threat at set-pieces, Louise Fensome latched onto a Jenn Brown-Wealls free-kick but was denied as her header thundered off the post.

Eventually they would secure a free kick in the West Ham half and another Brown-Wealls' freekick found Fensome again, who made no mistake this time and rifled her shot past the

West Ham goalkeeper.

Minutes later, Sophie Wyatt blazed just over the bar from another free kick as the home side grew into the tie.

With the prospect of extra time looming, West Ham would shatter Cheltenham's dreams, as Chloe Burr went on a jinxing run down the right wing, before firing a stinging shot into the top corner of the net from an unbelievable angle.

Cheltenham: Panniers, Bull, Brown-Wealls, Leask, Purvis, Fensome, Wyatt, Godwin, Knuckey, Hitchcox, Martin.

West Ham: Albuery, Auguste (Bent 81), Bottom, Burr, Chauhan, Chong, (Clifton 74), Cooper, Kelly, Locke, Mackie, Wheeler

MAKE FOOTBALL EVERYONE'S GAME.

CHELTENHAM TOWN LFC



DATE	OPPOSITION	COMP	POM
AUG			
SUN 21	H PLYMOUTH ARGYLE WOMEN	FAWNLSP	3-1 BUTCHER
SUN 28	H BILLERICAY TOWN WOMEN	FAWNLSP	2-1 NEWNS
Wed 31	A MK Dons Women	FAWNLSP	1-2 Butcher
SEPT			
Sun 4	A Oxford United Women	FAWNLSP	0-5 Liggett
Sun 18	A Watford Women	FAWNLSP	0-6
SUN 25	H AFC WIMBLEDON WOMEN	WNLC DR	14:00
OCT			
Sun 2	A London Bees	FAWNLSP	14:00
Sun 9	A Gillingham Women	FAWNLSP	14:00
THUR 13	H BRIDGWATER UNITED WOMEN	FAWNLSP	19:45
Sun 23	A Crawley Wasps	FAWNLSP	14:00
NOV			
SUN 6	H IPSWICH WOMEN	FAWNLSP	14:00
DEC			
SUN 18	H PORTSMOUTH WOMEN	FAWNLSP	14:00
JAN			
Sun 8	A Plymouth Argyle Women	FAWNLSP	14:00
Sun 29	A Billericay Town Women	FAWNLSP	14:00
FEB			
SUN 5	H OXFORD UNITED WOMEN	FAWNLSP	14:00
SUN 12	H WATFORD WOMEN	FAWNLSP	14:00
W/C 20	H MK DONS WOMEN	FAWNLSP	TBC
MAR			
Sun 5	A Portsmouth Women	FAWNLSP	14:00
W/c 13	A Bridgwater United Women	FAWNLSP	Tbc
SUN 19	H LONDON BEES	FAWNLSP	14:00
APR			
SUN 2	H GILLINGHAM WOMEN	FAWNLSP	14:00
SUN 16	H CRAWLEY WASPS	FAWNLSP	14:00
Sun 30	A Ipswich Women	FAWNLSP	14:00



Today's Teams



Cheltenham Town LFC

1. Aimee Watson (GK)
2. Courtney Jones
4. Holly Finch
5. Kelcie Fallon
6. Georgie-Marie Barbour-Gresham
7. Emma Congrave
8. Charlie Taylor
9. Jade Grove
10. Amy Wathan
11. Lacy-Jai Liggett
12. Henna Butcher
13. Shawna Hannam (GK)
14. Izzy Cook
15. Emily Owen (c)
16. Billie Haynes
17. Tia Asker
18. Maisy Collis
19. Holly Beck-Esson
20. Issy Newns
21. Kylie Nolan



AFC Wimbledon WFC

1. Faye Baker (GK)
2. Rosie Russell
3. Billie Brooks
4. Stephanie Mann
5. Kelly Highman
6. Amy Taylor
7. Emma Plewa
9. Ashlee Hincks
10. Chloe Sampson
11. Rebecca Carter
12. Megan Stow
14. Mollie Childerhouse
15. Gloria Siber
16. Emily Donovan
17. Becki Bath
18. Sarah Wentworth
19. Remmi Gardner
20. Hannah Billingham (c)
21. Mia Lockett
22. Ellie Dorey
23. Lauren Allen (GK)
28. Emily Oliver

Today's Match Officials

Referee

Harley

Heatherington

Assistant Referees

Matthew Dickinson

&

Richard Wood

Next Home Game



Bridgwater United Women

13 October, 2022
7:45pm kick-off
Corinium Stadium,
GL7 1H2



www.ctlfc.com



@CTLadiesFC



@CTLadies



@CheltenhamTownLFC



Main Club Sponsor



Shirt Sponsor



Womens National League

League Cup