



THE ROBINESSES REVIEW



WFA Women's
National League



Sunday September 27th 2020
vs Chesham United Ladies



FINANCIAL
FITNESS GROUP

Main Club Sponsor

Official matchday programme £1



THE CHAIRMAN'S CORNER



I am absolutely delighted to welcome the players, staff, and fans of Chesham United Ladies FC to The Big Local Stadium this afternoon.

It is over 6 months since we last enjoyed a competitive home game, and so much has changed both globally following the pandemic, and within the club.

Please ensure you follow the guidance as we get used to the 'new norm'. Stay away if you have any symptoms, wash your hands or use hand sanitizer on arrival, spread out around the ground keeping space between you and others, and make sure we have your contact details for track and trace.

Both of our new managers, Tom Davies (First Team) and Matt Bedford (Development) have brought a new approach and standards to the First and Reserve Teams. There will be many new faces on show today, and an abundance of talent. Pre-season was a challenge; finding suitable venues to train, arranging friendlies with other clubs all employing their own risk assessments and protocols, and the theme of poor communication in these unprecedented times is as prevalent in football as it is elsewhere. "Can we use changing rooms and if we do is that for six players? Or is for eight? The whole team? Just for 15 minutes? What about showers?" Etc etc.

So, a huge thank you to everyone at the Club for making today possible. In particular, the new club secretary Louise Bull, as well as Darren and Evie for manning the shop. Rather than going in, you can now purchase drinks and snacks via the hatch.

To Dan, who does such a fantastic job with our media, and now along with everyone else finds himself rolling up his sleeves and wiping down everything from the corner flags to goal posts. We have some fantastic people here, both involved with the playing side, and in the backroom – and we are always looking for extra volunteers.

So, if you can spare a minute to help remove the nets at the end of the match, or with some admin during the week, please let me know!

Enjoy the match and stay safe!

Andy Liddle,
Chairman

FROM THE DUGOUT



Good afternoon and welcome to The Big Local Stadium for our opening fixture of the 2020/21 FA WNL Division 1 Season. An occasion that we've all been looking forward to and one that after last week's disappointing news comes as a huge boost for everyone at the club.

I'd like to firstly thank everyone involved at the club for all of their efforts during this difficult time, it hasn't been easy on anyone and we've hit many road blocks across the last few months but it's been made easier with everyone pulling together and striving to ensure that we're in a position today to host our first fixture. I'm excited to be here, the club continues to grow both on and off the field in preparation for the next step and future challenges that we will face.

We've managed to have a productive "off-season", creating 3 key core values that are meaningful, and underpin what being a part of CTLFC Family is about: "Accountability, Ambition & Unity". These values show what being a part of Cheltenham is, h big or small your role, and allows everyone to remain focused on the importance of why we do, what we do.

Secondly we've had a large turnaround in players, recruitment has been fantastic and we've signed players that we identified last season as footballers who suit the style we want to play but ultimately as people that will contribute to the culture we're creating here. Billie Haynes, who joined us from midlands table toppers Wolves Women. Billie and I have worked together previously and I know that she got a huge potential to unlock. She's a forward player who can play either side, with great pace, strength and technique.

Rebecca Halford joins us from Yeovil, with fantastic experience at Tier 3 and youth international with Wales. She's slotted in straight away at the heart of defence, playing composed football, mixing this with her defensive duties. Ruby Scahill, Lauren Kayll, Jess Hood & Jade Grove who all currently study at Hartpury University & College and have joined from Swindon, WBA Development & Boldmere St. Michaels respectively.

Ruby's a central midfielder who's tenacious and has strong technical ability. Lauren's a forward player who can play centrally or in wider positions. She's strong, quick and has proven during pre-season that she's comfortable scoring goals at this level. Jess is a forward-thinking midfielder and is someone who links attacking play very well with her fantastic range of passing.

And last but not least Jade Grove. Jade's someone that I've admired for a while, she's got unbelievable strength, links play fantastically well and has a great ability to beat players one-on-one. I'm delighted that they've all signed, coupled with the retention of the fantastic group we already have and I'm looking forward to them adding some additional quality to this Cheltenham Ladies team.

I'd like to welcome Chesham, their staff, their players and their supporters to Cheltenham. Today's opposition are a free scoring high attacking side whom we haven't played since I've been with the club but it's a game that I'm looking forward to. As true as it is in boxing, it is in football too, "styles make fights" and today I believe we're in for an exciting game with two sides that will want to excite!

Enjoy the game today, Tom

IN THE HOTSEAT

MOLLY RIPLEY



Nickname: *Mol, Molber or Munchkin (my nana calls me that!)*

Age: *20.*

Position: *Goalkeeper.*

How did you get into football? *I followed my brother's footsteps and joined the same club at the age of six.*

Any pre-match superstitions? *I like to listen to music before a game and I tape my left wrist first. And only recently, I touch both posts before the game starts!*

Hobbies outside of football? *I like crafting in my spare time. I've made bracelets, face masks, scrunchies, headbands, printed t-shirts/sweatshirts. This helps me switch off and relax a little.*

Favourite Club? *Man City!*

Favourite Player? *Joe Hart and Ellie Roebuck.*

Favourite film? *I don't really have a favourite... but I do love horror films!*

Favourite band/artist? *Again, I don't have a fixed favourite, but I do love listening and relaxing to Andrea Bocelli.*

Favourite television show/series? *It's gotta be... Stranger Things, Sherlock Holmes or Hollyoaks*

Favourite joke? *Why was 6 afraid of 7? Because 7 8 9!*

What's your most embarrassing moment in football? *During a Futsal game for Doncaster Deaf Ladies, I came out of the 'D', caught the ball and gave away a free kick in front of so many spectators...But the line markings were faded so it wasn't easy to tell!*

What's the most ridiculous fact you know? *You get red eye in photos because your pupil is just a hole and the flash reflects the blood in the back of your eye.*

Pineapple on pizza – yes or no? *YES! Absolutely!*

Funniest member of the club? *That's a difficult choice. So many of the girls make me laugh!*

What's the best bit of advice you've ever received? *Don't be afraid to push yourself out of your comfort zone, put yourself out there and trust in your abilities. What's the worst that can happen?*

What's your favourite part of being a CTLFC player? *I love the girls. They are really supportive, and everyone pulls together as a team. I've really enjoyed having a dedicated goalkeeping coach too, which has really helped me develop. I look forward to working with another one again soon.*

THE CHELTENHAM TOWN LADIES 2020/21 SQUAD



Abbi Barker
Available to
sponsor



Abby Bevan
SPONSOR: Pears
Home Improvements
& Litchy Creative



Amie Boyce
Available to
sponsor



Mai Butler
SPONSOR: Jon Palmer
& Max Wilkinson



Charlotte Criddle
SPONSOR: Crossfit
Navalia



Hannah Dix
Available to
sponsor



Cerys Dolloway
Available to
sponsor



Becky Donnelly
Available to
sponsor



Lauren Ellis
Available to
sponsor



Hannah Galpin
Available to
sponsor



Sophie Griffiths
Available to
sponsor



Jade Grove
SPONSOR: Holden
Garden Machinery



Rebecca Halford
Available to
sponsor



Sammy Hallsworth
SPONSOR: Proper
Ballers



Kiannah Hawkins-Sheere
SPONSOR: Invicta
Crossfit Glos



Billie Haynes
SPONSOR: MPH
Merchant



Tamzin Hayward
SPONSOR: Property
Condition Surveys Ltd



Jess Hood
Available to
sponsor



Hannah Hughes
Available for
sponsor



Rokšana Karbownik
SPONSOR: Kite Co.
Apparel



Lauren Kayll
SPONSOR: Virtual
Revolution 360



Alice Kempski
SPONSOR: Mark
White OBE DL



Sarah King
SPONSOR: Plan
Delivery



Harriet Lambe
SPONSOR:
BlackboxDNA



Jenna Lepore
*SPONSOR: Free
The Mind PT*



Robyn Levett
*Available to
sponsor*



Sam Morris
*SPONSOR: Jon Palmer,
Olivia Aldridge & TEC
Business Group*



Kirsten Rendall
Sponsor: ei



Leah Rhodes
*SPONSOR: AutoFour &
Quintech*



Molly Ripley
*Available to
sponsor*



Ruby Scahill
*SPONSOR: Swindon
Multi-Sport*



Elle-Mae Simpson
*Available to
sponsor*



Nicole Sullivan
*SPONSOR: Darren Smith
Driving Instructor*



**Cat Sutherland-
Watkins**
*Available to
sponsor*



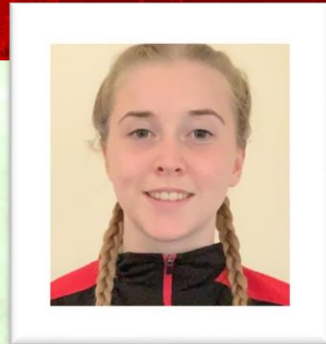
Shannon Waine
*Available to
sponsor*



Taig Wildman
*Available to
sponsor*

IN THE HOTSEAT

TAIG WILDMAN



Nickname: *Most people call me "Tai"*

Age: *I'm 19*

Position: *Midfielder or Forward*

How did you get into football? *I got into football at a young age, I was five when I joined my first ever team, Cleeve Colts*

Hobbies outside of football? *I'm a kickboxer as well as a footballer. I just love it, and I've been doing it since I was 13. It's great for cardio and strength!*

Favourite Club? *Manchester United*

Favourite Player? *Kelly Smith, England captain and Arsenal too when she was playing.*

Favourite film? *Wow... that's tough. Hard decision but it's got to be the Grinch. My all-time favourite Christmas film*

Favourite band/artist? *I love a bit of Neyo!*

Favourite television show/series? *Right now... it has to be Riverdale*

What's your most embarrassing moment in football? *I was running on the left wing and someone chucked a stick onto the pitch and I tripped over it and face-planted in front of everyone.*

What's the most ridiculous fact you know? *You can hear a Blue Whale's heartbeat from more than two miles away*

Pineapple on pizza – yes or no? *Yes! 100% Yes!*

What's the best bit of advice you've ever received? *It was from my Nan. She always used to say "Tai, whatever life throws at you, you've got to be stronger! You've got to be able to push it aside and beat whatever it is. And you've got to be able to tell people no. You've got to be able to help others. And you've got to be able to be yourself, don't let other people judge you or control you. Do what's best for you"*

What's your favourite part of being a CTLFC player? *My favourite thing is that I'm treated fairly like all the other players. I like how professional it is and that I'm where I wanted to be. I like knowing that it's improving me as a player mentally and physically.*

THE ROBINESSES' RESERVES

Welcome everyone to the start of the First Team's campaign!

For us working with the Development side, our season began a couple of weeks ago on the 13th. We had a great pre-season and a lot of that positivity is still there despite a tough start to the campaign.

We know we are going in the right direction and each session is productive and the improvements in quality and understanding grow each week. We have a great bunch of girls willing to learn as well as a great coaching team with the enthusiasm to teach. It should be a great year with lots of vital lessons!

Looking back at last week, I'd like to take a moment to thank everyone who turned out to support. It was nice to see such a decent crowd, even in the current climate.

Take a look at our fixture list when you can, and if the Firsts are out of town do please come and get behind our young Development squad. I know the girls certainly appreciate it, as do our coaching staff.

Today we're travelling down to Worle Recreation Ground to face Weston Mendip, but we are back on home turf against Oldland Abbottonians next Sunday (October 4) so it would be fantastic to see some more faces if you don't fancy the trip to Bath for the First Team's clash with Larkhall!

Thank you all again for the support and best of luck to the First Team today!

Matt Bedford,
Development Team Manager



THE ROBINESSES' YOUTH

Chairman:	Gary Goodhall	01242 228559	gary.goodhall@blueyonder.co.uk
Club Secretary:	Guy Stirling Lee	07737 126064	guystirlinglee@gmail.com
Welfare Officer:	Guy Stirling Lee	07737 126064	guystirlinglee@gmail.com
U17s Manager:	Alan Lusmore	07400 146006	alanlusmore72@gmail.com
U15s Manager:	Ian Plumpton	07427 192262	ianplumpton@sky.com
U13s Manager:	Mark Beaver	07852 194408	m.beaver12@hotmail.com
U12s Manager:	Chris Easey	07508 854661	coachchriseasey@hotmail.com
U11s Manager:	Clive Gowing	07795 007983	clivegowing@hotmail.com
U10s Manager:	Simon Bickerdike	07896 768069	pieman333@sky.com
U9s Manager:	Guy Stirling Lee	07737 126064	guystirlinglee@gmail.com
U8s Manager:	Mark Knight	07885 732524	mkight84@hotmail.com

The Youth section has made a really promising start since early season training began in earnest in August. This season we have been able to add an additional U9s team into the pathway so now we have teams at U8, U9, U10, U11, U12, U13 competing in Gloucester County Girls League, U15s in Bristol Girls League and U17s in the Mercian Junior League.

This means that we have not only retained the majority of our existing players but also recruited across all age groups and as such have over 120 girls training and playing football every week in Cheltenham colours!

It goes without saying that all of this couldn't be possible without an ever-growing volunteer workforce – 20 at last count. A massive thank you to each of them for all the steps they have already put in place to ensure the season has got off to a safe and successful start. Friendlies aside, there have been 11 wins out of 14 competitive matches which includes at least 1 win for each of the 8 teams!

Good luck to the senior Robinesses for the start of their League campaign, from all the Youth section!



THE

2020/21 FIXTURES



Women's
National League



FIRST TEAM

<i>Date</i>	<i>Opposition</i>
Sept 27th	CHESHAM UNITED Ladies (H)
Oct 1st	Swindon Town Women (A)
Oct 4th	Larkhall Athletic Women (A)
Oct 11th	MAIDENHEAD UNITED WOMEN (H)
Oct 25th	Poole Town Ladies (A)
Nov 8th	EXETER CITY WOMEN (H)
Nov 29th	Southampton Women (A)
Dec 6th	SOUTHAMPTON FC (H)
Dec 13th	Buckland Athletic Women (A)

DEVELOPMENT TEAM

<i>Date</i>	<i>Opposition</i>	<i>Date</i>	<i>Opposition</i>
Sep 27 th	Weston Mendip (A)	Nov 8 th	WESTON MENDIP (H)
Oct 4th	OLDLAND ABBOTTONIANS (H)	Nov 15 th	Weston-Super-Mare (A)
Oct 11 th	Almondsbury (H)	Nov 22nd	DOWNEND FLYERS (H)
Oct 18th	FRAMPTON RANGERS (H)	Nov 29 th	Downend Flyers (A)
Oct 25 th	Oldland Abbottonians (A)	Dec 6th	WESTON-SUPER-MARE (H)
Nov 1 st	Bristol Ladies Union (A)	Dec 13 th	Almondsbury (A)

TODAY'S TEAMS



Cheltenham Town LFC

Robyn Levett
Sammy Hallsworth
Rebecca Halford
Sam Morris
Cerys Dolloway
Mai Butler
Kirsten Rendall
Lauren Ellis
Harriet Lambe
Charlotte Criddle
Abby Bevan
Alice Kempski
Ruby Scahill
Jess Hood
Sarah King
Billie Haynes
Lauren Kayll
Jade Grove

Manager: Tom Davies

Coaches: Morgan Hallett and Jess
Hawkins



Chesham United LFC

Emma Bebbington
Stacey Blackburn
Rebecca Bloor
Kate Bowers
Dawne Campbell
Riva Casley
Aalyiah Charles
Emma Delves
Lucia Delves
Karima Elouath
Gemma Fraser
Kirsty Gladwin
Olivia Harris
Madelyn Key
Paula Lambert
Sophie Lingley
Anneka Nuttall
Natasha Sandalls
Laura Sandy
Natasha Smith
Nicole Spittle

Manager: Lisa Welling

Coaches: Sam Arhin, Adam
Colley, Matthew McHugh and
Mark Overall

Referee: Insert Name Here

For updates head to Ctlfcc.com or follow...



@CTLadies



@CTLadiesFC



@CheltenhamTownLFC